

TWIN VISES



PTP

Protected pneumatic vise 100, 125, 160, 200

- Protected against swarf and chips
- Pneumatic version
- Normal stroke: PTP-N / Long stroke: PTP-L
- Fixed jaw: PTP-F
- Pneumatic jaw stroke control valve
- Air purge
- Air sensing

Page 10.4



TVP

Pneumatic vise 100, 160, 200, 250, 315

- Normal stroke: TVP-N
- Long stroke: TVP-L
- Fixed jaw: TVP-F
- Air purge

Page 10.20



PTH

Protected hydraulic vise 100, 125, 160, 200, 250

- Protected against swarf and chips
- Hydraulic version
- Normal stroke: PTH-N / Long stroke: PTH-L
- Fixed jaw: PTH-F
- Pneumatic jaw stroke control valve
- Air purge
- Air sensing

Page 10.6



TVH

Hydraulic vise 100, 160, 200

- Normal stroke: TVH-N
- Long stroke: TVH-L
- Fixed jaw: TVH-F
- Air purge

Page 10.22



PT-RR

Protected vise 160, 200, 250

- QUICK JAWS CHANGE
- Pneumatic version
- Hydraulic version
- Pneumatic jaw stroke control valve
- Long stroke: PTP-L-RR / PTH-L-RR
- Air sensing
- OD and ID clamping

Page 10.8



SAB-1

Safety valve (optional)

- To maintain air pressure during pallet transportation / storage and machining

Page 10.26



STV-2

Spring and air operated vise 125, 180, 225

- Protected
- Springs to clamp, pneumatic to open
- Turbo function to increase the clamping forces
- Pneumatic jaw stroke control valve
- Normal stroke: STV-2N / Long stroke: STV-2L
- Air purge
- Air sensing

Page 10.14

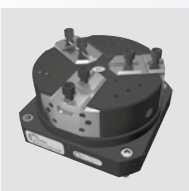


Jaws

Accessories

- Soft top jaws
- Soft top jaws for PT-RR
- Wide hard top jaws
- Narrow hard top jaws
- Jaws for SinterGrip

Page 10.28



STV-3

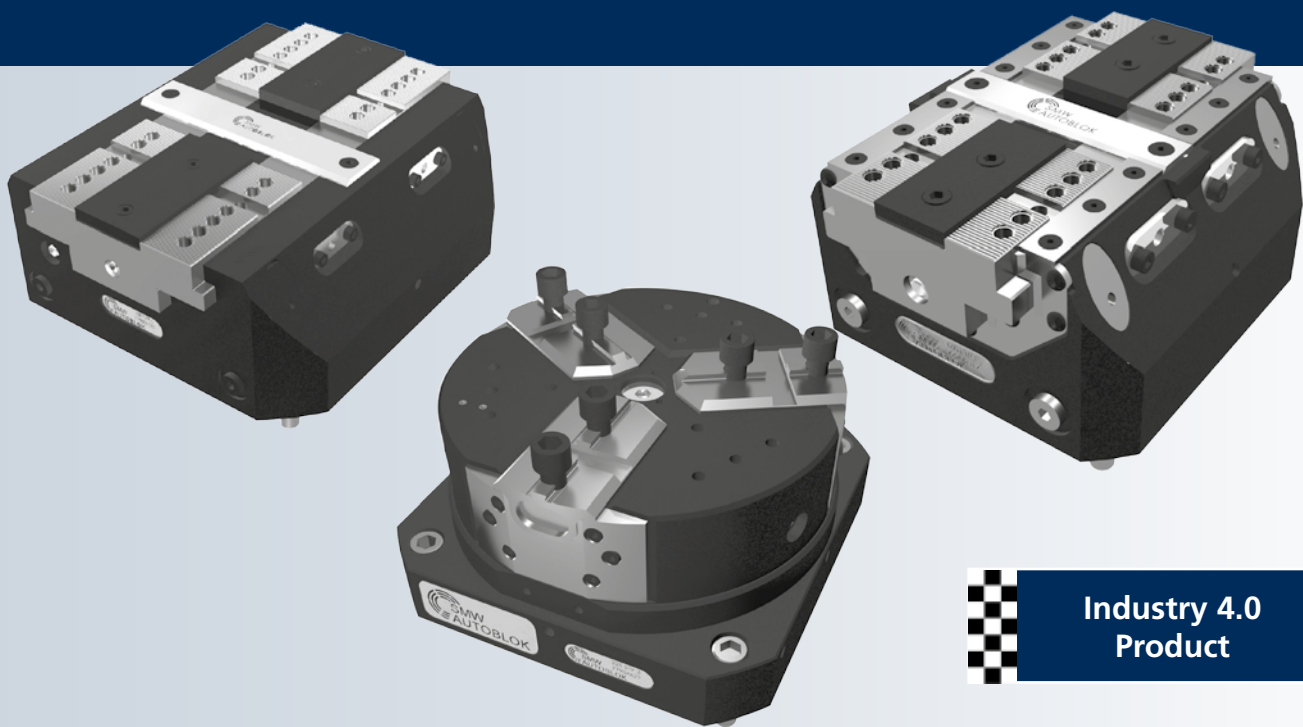
Spring and air operated vise 180, 225

- Protected
- 3 jaws
- Springs to clamp, pneumatic to open
- Turbo function to increase the clamping forces
- Normal stroke: STV-3N / Long Stroke STV-3L
- Pneumatic jaw stroke control valve
- Air purge

Page 10.16

TWIN VISES

RANGE OF PRODUCTS

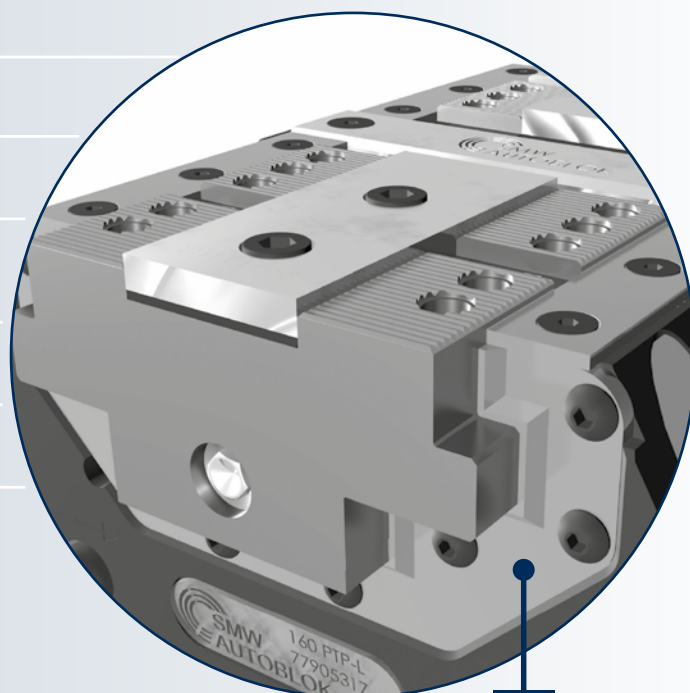


Industry 4.0
Product

1 PT - PROTECTED TWIN VISES

SIZES AVAILABLE 100-125-160-200-250

- ▶ Pneumatic and Hydraulic Version
- ▶ Pneumatic Valve (optional)
- ▶ Air Sensing
- ▶ Master jaws guide protected against swarf and chips **1.1**
- ▶ Normal Stroke
- ▶ Long Stroke
- ▶ Fixed Jaw

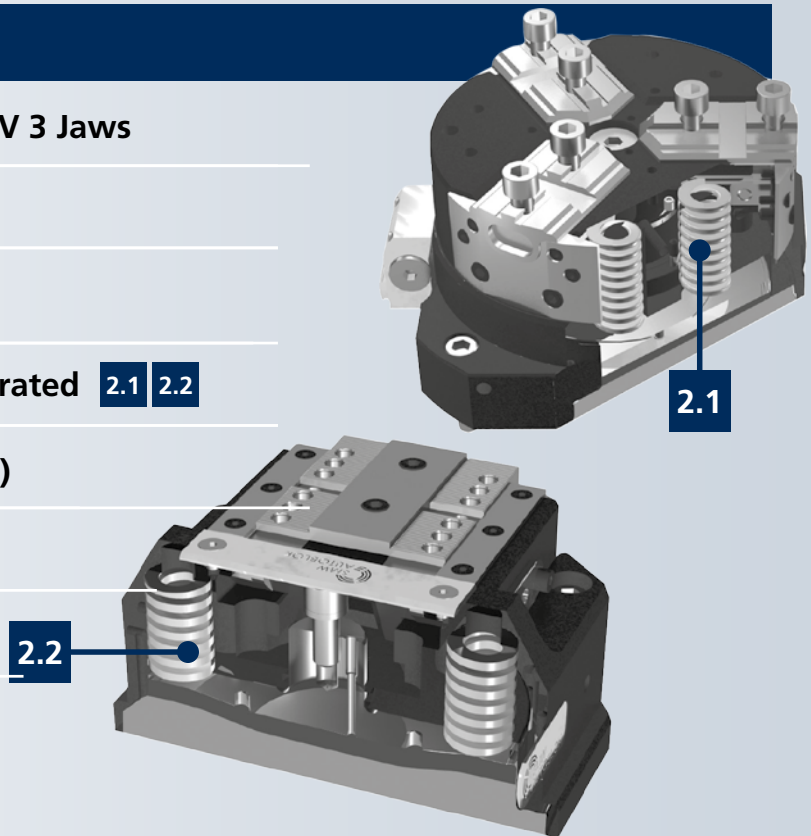


1.1

2 STV - SPRING AND AIR OPERATED TWIN VISES

SIZES AVAILABLE 180-225

- ▶ STV 2 Jaws (also 125) and STV 3 Jaws
- ▶ Air Sensing
- ▶ Master jaws guide protected against swarf and chips
- ▶ Spring Clamped and Air Operated **2.1** **2.2**
- ▶ Safety Valve SAB-1 (optional)
- ▶ Pneumatic Valve (optional)
- ▶ Normal stroke **2.2**
- ▶ Long stroke

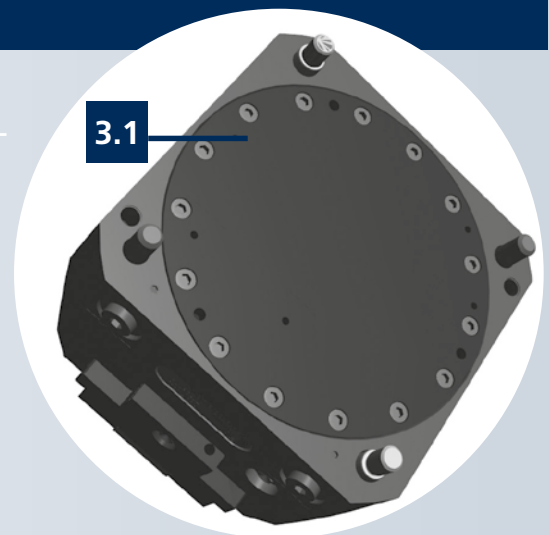


10

3 TV - STANDARD TWIN VISES

SIZES AVAILABLE 100-160-200-250-315

- ▶ Pneumatic and Hydraulic Version
- ▶ Air Sensing **3.1**
- ▶ Stroke control Proximity (optional)
- ▶ Normal Stroke
- ▶ Long Stroke
- ▶ Fixed Jaw



4 RR - QUICK JAWS CHANGE

PROTECTED TWIN VISE with QUICK CHANGE

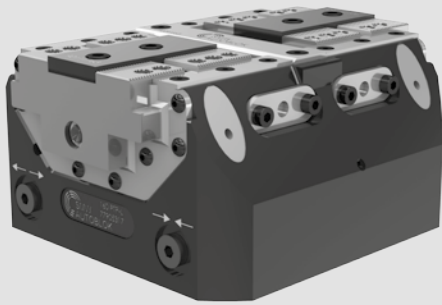
- ▶ Pneumatic and Hydraulic Version
- ▶ Long stroke
- ▶ OD and ID Clamping

PTP-N/PTP-L/PTP-F

PROTECTED PNEUMATIC TWIN VISE

- Pneumatic version
- Pneumatic open / close control (stroke control) master jaws valve

- PTP-N: Normal stroke
- PTP-L: Long stroke
- PTP-F: One fixed jaw



proofline® series
fully sealed – low maintenance

Application/customer benefits

- Compact design
- Master jaws guide protected against swarf and chips (proofline)
- Highest repeatability
- Highest rigidity
- Linear pressure adjustment

Technical features

- Housing and functional parts hardened for high precision and long life
- Ready for air purge
- Ready for central grease lubrication
- Master jaws with both Tongue & Groove and fine serration 1.5 mm x 60°
- OD and ID clamping
- Pneumatic open / close control (stroke control) master jaws valve (optional)
- Air sensing
- Lubrication with SMW-AUTOBLOK K67 grease
- Stroke control via proximity switches (optional) on all types and sizes except 100 PTP-F
- 100 PTP-F only one stroke control via proximity switch for full closed vise

Standard equipment

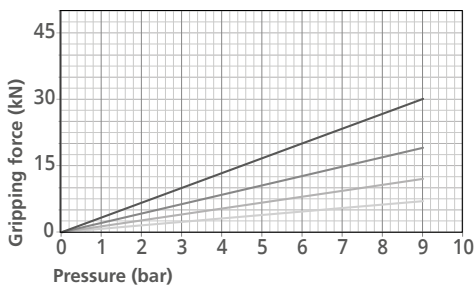
Self-centering vise without top jaws
All bolts and centering bushings included

Gripping force diagrams

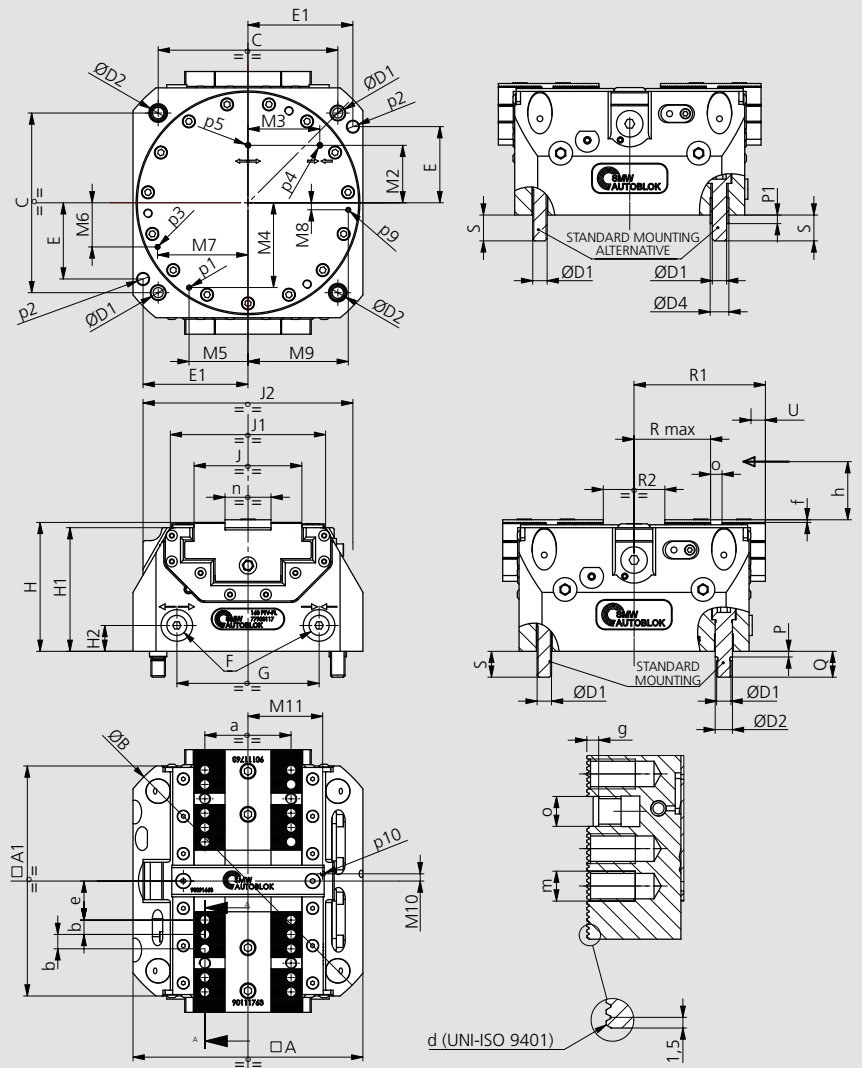
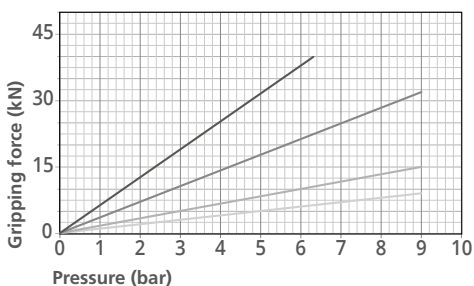
PTP-N □100 □125 □160 ■200



PTP-L □100 □125 □160 ■200



PTP-F □100 □125 □160 ■200



Subject to technical changes.

PTP-N/PTP-L/PTP-F

- Pneumatic version
- Pneumatic open / close control (stroke control) master jaws valve

- PTP-N: Normal stroke
- PTP-L: Long stroke
- PTP-F: One fixed jaw

PROTECTED PNEUMATIC TWIN VISE

10

Type	Id. No.	Stroke type	Stroke / jaw [mm]	Max. Clamping force [kN]	Piston area [cm ²]	Max. Operating pressure [bar]	Repeatability [mm]	Weight [kg]
100 PTP-N	77905211	NORMAL	2.6	13	45	9	0.01	5.5
100 PTP-L	77905311	LONG	6	7				
100 PTP-F	77905411	FIXED JAW	6	9				
125 PTP-N	77905212	NORMAL	2.6	22	78	9	0.01	7
125 PTP-L	77905312	LONG	6	12				
125 PTP-F	77905412	FIXED JAW	6	15				
160 PTP-N	77905217	NORMAL	3	40	128	9	0.01	13
160 PTP-L	77905317	LONG	8.4	19				
160 PTP-F	77905417	FIXED JAW	8.4	32				
200 PTP-N	77905221	NORMAL	4.2	50	194	7	0.02	23
200 PTP-L	77905321	LONG	10.2	30		9		
200 PTP-F	77905421	FIXED JAW	10.2	38		6		

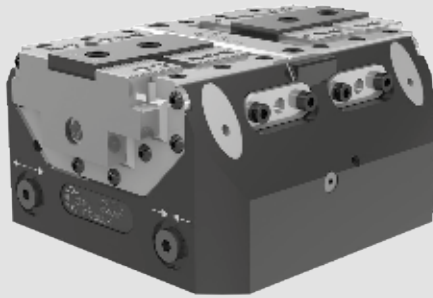
PTP		100	125	160	200	
	A	mm	100	125	160	200
	A1	mm	110	125	160	200
	B(Ø)	mm	136	162	205	255
	C	mm	80	100	125	160
	D1(Ø)	mm	M8	M8	M10	M12
	D2 (Øf7)	mm	10	10	12	14
	D4 (Øjs7)	mm	11	11	13	16
	E	mm	32	/	53	73
	E1	mm	45	/	73	92
	F	mm	M5	M5	G1/8"	G1/8"
	G	mm	59	59	99	127
	H	mm	75.5	80.5	89.7	97
	H1	mm	72	77	86	93
	H2	mm	15	17	18	18
	J	mm	47	47	75	94
	J1	mm	82	100	108	144
	J2	mm	100	121	146	166
	M2	mm	32	32	40	50
	M3	mm	29.5	29.5	50	65
	M4	mm	34,2	40,5	59	72,8
	M5	mm	27,7	38,5	41	52,9
	M6	mm	14,2	10,6	30,7	39,5
	M7	mm	41,1	54,5	62,9	80,9
	M8	mm	8,3	4,8	4,9	9,4
	M9	mm	42,7	55,3	69,8	89,5
	M10	mm	5	5	5	8
	M11	mm	34	34	52	60
	P	mm	4	4	4	5
	P1	mm	4	4	6	6
	Q	mm	15	15	18	20
Min/max (long stroke)	R max	mm	25.6/31.6	25.6/31.6	44.8/53.2	54.5/64.7
Min/max (normal stroke)	R max	mm	25.4/28	25.4/28	45/48	54.5/58.7
Min/max (fixed jaw)	R max	mm	25.6/31.6	25.6/31.6	44.8/53.2	54.5/64.7
Min/max (long stroke)	R1	mm	57.5/63.5	64.5/70.5	82.5/90.9	102.5/112.7
Min/max (normal stroke)	R1	mm	57.4/60	64.4/67	82.5/85.5	102.8/107
Min/max (fixed jaw)	R1	mm	57.5/63.5	64.5/70.5	82.5/90.9	102.5/112.7
Min/max (long stroke)	R2	mm	20/32	20/32	26/42.8	30/50.4
Min/max (normal stroke)	R2	mm	19.8/25	19.8/25	26/32	30.6/39
Min/max (fixed jaw)	R2	mm	20/26	20/26	26/34.4	30/40.2
	S	mm	15	15	18	20
Long stroke	U	mm	6	6	8.4	10.2
Normal stroke	U	mm	2.6	2.6	3	4.2
Fixed jaw	U	mm	6	6	8.4	10.2
	a	mm	35	35	60	80
	b	mm	7	7	10	10
Serration	d	mm	1.5x60°	1.5x60°	1.5x60°	1.5x60°
Min/max (long stroke) (fixed jaw)	e	mm	14.6/20.6	14.6/20.6	18.8/27.2	28.5/38.7
Min/max (normal stroke)	e	mm	14.4/17	14.4/17	19/22	28.5/32.7
	f	mm	1.8	1.8	1.8	2
	g	mm	2.7	2.7	3.2	4
	h	mm	16	16	25	35
	m	mm	M6x10	M6x10	M8x12	M8x12
	n (g6)	mm	20	20	32	40
	o (H7)	mm	6	6	8	8
Lubrication fitting	p1	mm	M4	M4	M4	M4
	p2 (øH7)	mm	/	/	8x14	8x14
Pneumatic open/close- stroke control m.Jaws or air purge	p3	mm	M4	M4	M4	M4
Vise close	p4	mm	M4	M4	M4	M4
Vise open	p5	mm	M4	M4	M4	M4
Air sensing connection	p9	mm	M4	M4	M4	M4
Air sensing outlet (under front plate)	p10	mm	M4	M4	M4	M4

PTH-N/PTH-L/PTH-F

PROTECTED HYDRAULIC TWIN VISE

- Hydraulic version
- Pneumatic open / close control (stroke control) master jaws valve

- PTH-N: Normal stroke
- PTH-L: Long stroke
- PTH-F: One fixed Jaw



proofline® series
fully sealed – low maintenance

Application/customer benefits

- Compact design
- Master jaws guide protected against swarf and chips
- Highest repeatability
- Highest rigidity
- Linear pressure adjustment

Technical features

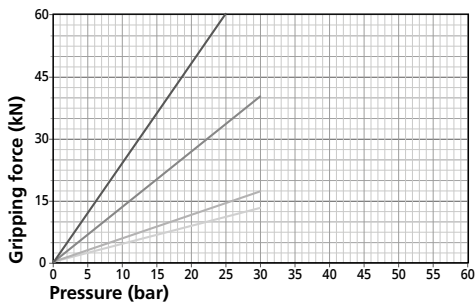
- Housing and functional parts hardened for high precision and long life
- Ready for air purge
- Ready for central grease lubrication
- Master jaws with both Tongue & Groove and fine serration 1.5 mm x 60°
- OD and ID clamping
- Pneumatic open / close control (stroke control) master jaws valve (optional)
- Air sensing
- Lubrication with SMW-AUTOBLOK K67 grease
- Stroke control via proximity switches (optional) on all types and sizes except 100 PTH-F
- 100 PTH-F: Only one stroke control via proximity switch for full closed vise

Standard equipment

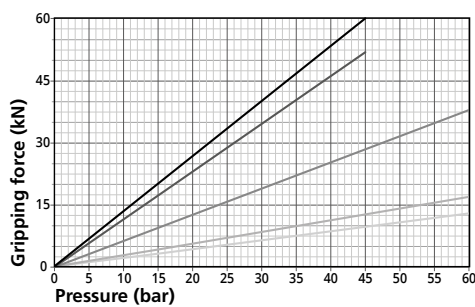
Self-centering vise without top jaws
All bolts and centering bushings included

Gripping force diagrams

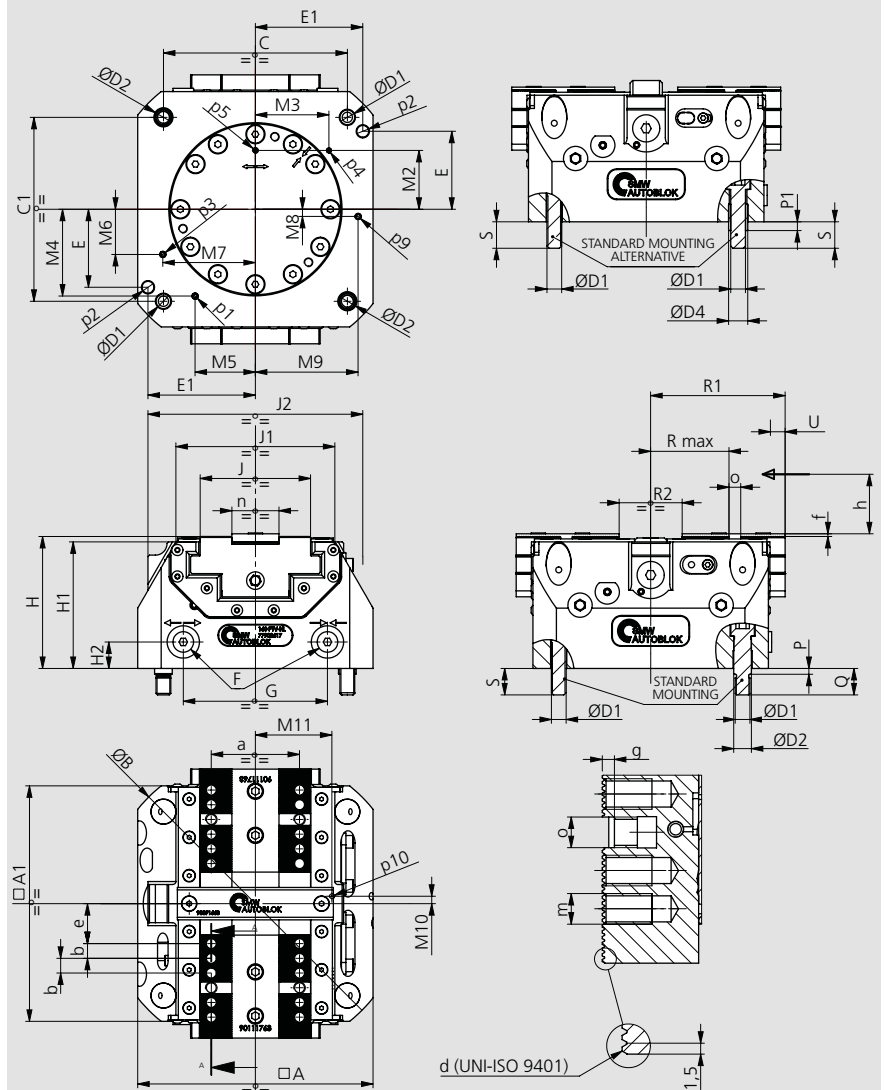
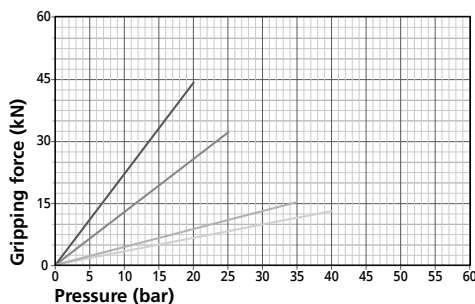
PTH-N □ 100 □ 125 □ 160 ■ 200



PTH-L □ 100 □ 125 □ 160 ■ 200 ■ 250



PTH-F □ 100 □ 125 □ 160 ■ 200



Subject to technical changes.

PTH-N/PTH-L/PTH-F

- Hydraulic version
- Pneumatic open / close control (stroke control) master jaws valve

- PTH-N: Normal stroke
- PTH-L: Long stroke
- PTH-F: One fixed Jaw

PROTECTED HYDRAULIC TWIN VISE

10

Type	Id.No.	Stroke type	Stroke / jaw [mm]	Max. Clamping force [kN]	Piston area [cm ²]	Max. Operating pressure [bar]	Repeatability [mm]	Weight [kg]
100 PTH-N	77905711	NORMAL	2.6	13	15	30	0.01	6
100 PTH-L	77905811	LONG	6			60	0.01	
100 PTH-F	77905911	FIXED JAW	6			40	0.01	
125 PTH-N	77905712	NORMAL	2.6	17	20	30	0.01	8
125 PTH-L	77905812	LONG	6			60	0.01	
125 PTH-F	77905912	FIXED JAW	6			35	0.01	
160 PTH-N	77905717	NORMAL	3	40	45	30	0.01	15
160 PTH-L	77905817	LONG	8.4			60	0.01	
160 PTH-F	77905917	FIXED JAW	8.4			25	0.01	
200 PTH-N	77905721	NORMAL	4.2	60	68	25	0.02	25
200 PTH-L	77905821	LONG	10.2			45	0.02	
200 PTH-F	77905921	FIXED JAW	10.2			20	0.02	
250 PTH-L	77905826	LONG	15	60	113	45	0.02	35

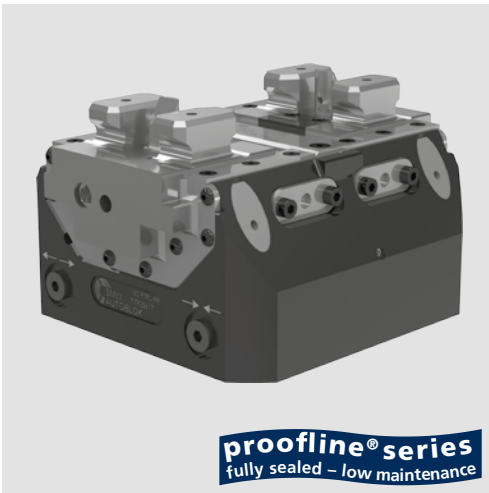
PTH			100	125	160	200	250
	A	mm	100	125	160	200	210
	A1	mm	110	125	160	200	238
	B(Ø)	mm	136	162	205	255	300
	C	mm	80	100	125	160	180
	C1	mm	80	100	125	160	200
	D1(Ø)	mm	M8	M8	M10	M12	M12
	D2 (Øf7)	mm	10	10	12	14	14
	D4 (Øjs7)	mm	11	11	13	16	16
	E	mm	32	/	53	73	80
	E1	mm	45	/	73	92	90
	F	mm	G1/8"	G1/8"	G1/8"	G1/8"	G1/8"
	G	mm	56	57	98	128	90
	H	mm	75,5	80,5	89,7	97	105
	H1	mm	72	77	86	93	100
	H2	mm	15	17	18	18	20
	J	mm	47	47	75	94	125
	J1	mm	82	100	108	144	180
	J2	mm	100	121	146	166	-
	M2	mm	32	32	40	50	80
	M3	mm	29.5	29.5	50	65	45
	M4	mm	34,2	40,5	59	72,8	89,8
	M5	mm	27.7	38,5	41	52,9	65,2
	M6	mm	14,2	10,6	30,7	39,5	0
	M7	mm	41,1	54,5	62,9	80,9	92
	M8	mm	8,3	4,8	4,9	9,4	6,7
	M9	mm	42,7	55,3	69,8	89,5	76,7
	M10	mm	5	5	5	8	9
	M11	mm	34	34	52	60	78
	P	mm	4	4	4	5	5
	P1	mm	4	4	6	6	6
	Q	mm	15	15	18	20	20
Min. / max. (long stroke)	R max	mm	25.6/31.6	25.6/31.6	44.8/53.2	54.5/64.7	51,5/66,5
Min. / max. (normal stroke)	R max	mm	25,4/28	25,4/28	45/48	54,5/58,7	-
Min. / max. (fixed jaw)	R max	mm	25.6/31.6	25.6/31.6	44.8/53.2	54.5/64.7	-
Min. / max. (long stroke)	R1	mm	57.5/63.5	64,5/70,5	82.5/90.9	102.5/112.7	119,5/134,5
Min. / max. (normal stroke)	R1	mm	57.4/60	64,4/67	82.5/85.5	102.8/107	-
Min. / max. (fixed jaw)	R1	mm	57.5/63.5	64,5/70,5	82.5/90.9	102.5/112.7	-
Min. / max. (long stroke)	R2	mm	20/32	20/32	26/42.8	30/50.4	39/69
Min. / max. (normal stroke)	R2	mm	19.8/25	19.8/25	26/32	30.6/39	-
Min. / max. (fixed jaw)	R2	mm	20/26	20/26	26/34.4	30/40.2	-
	S	mm	15	15	18	20	20
Long stroke	U	mm	6	6	8.4	10.2	15
Normal stroke	U	mm	2.6	2.6	3	4.2	-
Fixed jaw	U	mm	6	6	8.4	10.2	-
	a	mm	35	35	60	80	90
	b	mm	7	7	10	10	12
Serration	d	mm	1,5x60°	1,5x60°	1,5x60°	1,5x60°	1,5x60°
Min. / max. (long stroke)	e	mm	14.6/20.6	14.6/20.6	18.8/27.2	28.5/38.7	32,5/47,5
Min. / max. (normal stroke)	e	mm	14.4/17	14.4/17	19/22	28.5/32.7	-
Min. / max. (fixed jaw)	e	mm	14.6/20.6	14.6/20.6	18.8/27.2	28.5/38.7	-
	f	mm	1.8	1.8	1.8	2	2,5
	g	mm	2.7	2.7	3.2	4	4
	h	mm	16	16	25	35	40
	m	mm	M6x10	M6x10	M8x12	M8x12	M10x15
	n (g6)	mm	20	20	32	40	50
	o (H7)	mm	6	6	8	8	10
Lubrication fitting	p1	mm	M4	M4	M5	M5	M5
	p2 (øH7)	mm	/	/	8x14	8x14	10x20
Pneumatic open / close - stroke control master jaws or air purge	p3	mm	M4	M4	M5	M5	M5
Vise closed	p4	mm	M4	M4	M4	M4	M5
Vise open	p5	mm	M4	M4	M4	M4	M5
Air sensing connection	p9	mm	M4	M4	M5	M5	M5
Air sensing outlet (under front plate)	p10	mm	M4	M4	M4	M4	M5

PTP-L-RR

PROTECTED PNEUMATIC TWIN VISE
WITH QUICK CHANGE

- Quick jaws change
- Pneumatic open/close control (stroke control) master jaws valve

- Pneumatic version
- PTP-L-RR: Long stroke



proofline® series
fully sealed – low maintenance

Application/customer benefits

- Compact design
- Master jaws guide protected against swarf and chips
- Highest repeatability
- Highest rigidity
- Linear pressure adjustment
- Quick jaws change

Technical features

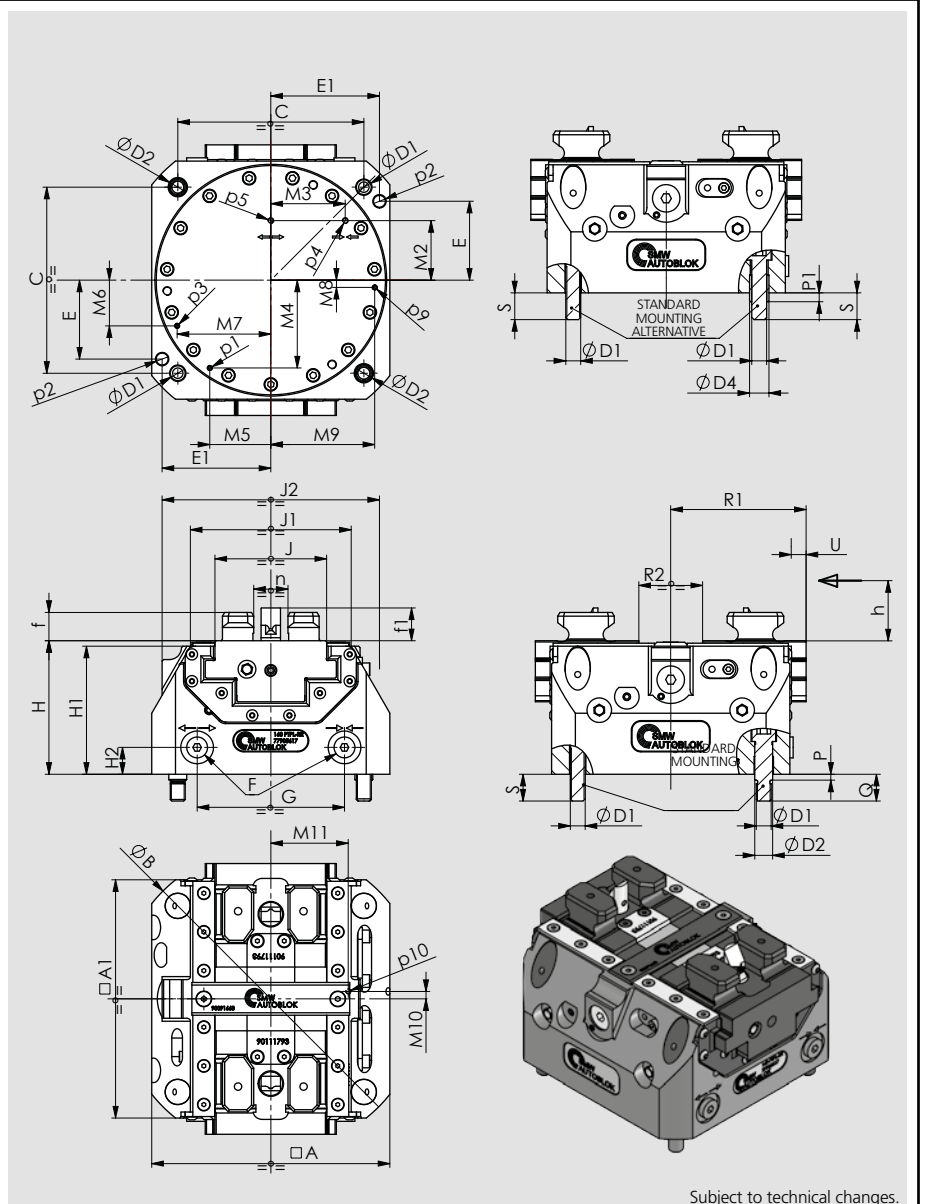
- Housing and functional parts hardened for high precision and long life
- Ready for air purge
- Ready for central grease lubrication
- Quick jaw change master jaw
- OD and ID clamping
- Pneumatic open/close control (stroke control) master jaws valve
- Air sensing
- Lubrication with SMW-Autoblok K67 grease
- Stroke control via proximity switches

Standard equipment

Self-centering vise without top jaws
All bolts and centering bushings included

Gripping force diagrams

PTP-L-RR ■ 160 ■ 200



Subject to technical changes.

PTP-L-RR

PROTECTED PNEUMATIC TWIN VISE
WITH QUICK CHANGE

- Quick jaws change
- Pneumatic open/close control (stroke control) master jaws valve

- Pneumatic version
- PTP-L-RR: Long stroke

Type	Id.No.	Stroke type	Stroke/jaw [mm]	Max clamping force [kN]	Piston area [cm ²]	Max. Operating pressure [bar]	Repeatability [mm]	Weight [kg]
160 PTP-L-RR	77905617	LONG	8,4	19	128	9	0.01	13
200 PTP-L-RR	77905621	LONG	10,2	30	194	9	0.02	23

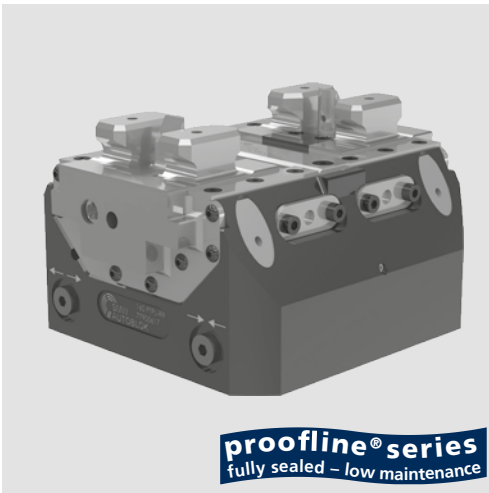
PTP-RR			160	200
	A	mm	160	200
	A1	mm	160	200
	B(Ø)	mm	205	255
	C	mm	125	160
	D1(Ø)	mm	M10	M12
	D2 (Øf7)	mm	12	14
	D4 (Øjs7)	mm	13	16
	E	mm	53	73
	E1	mm	73	92
	F	mm	G1/8"	G1/8"
	G	mm	99	127
	H	mm	89,7	97
	H1	mm	86	93
	H2	mm	18	18
	J	mm	75	94
	J1	mm	108	144
	J2	mm	146	166
	M2	mm	40	50
	M3	mm	50	65
	M4	mm	59	72,8
	M5	mm	41	52,9
	M6	mm	30,7	39,5
	M7	mm	62,9	80,9
	M8	mm	4,9	9,4
	M9	mm	69,8	89,5
	M10	mm	5	8
	M11	mm	52	60
	P	mm	4	5
	P1	mm	6	6
	Q	mm	18	20
Min/max (long stroke)	R1	mm	82.5/90.9	102.5/112.7
Min/max (long stroke)	R2	mm	26/42.8	30/50.4
	S	mm	18	20
Long stroke	U	mm	8.4	10.2
	f	mm	19	19
	f1	mm	22	22
	h	mm	25	35
	n (H6)	mm	23	38
Lubrication fitting	p1	mm	M4	M4
	p2 (ØH7)	mm	8x14	8x14
Pneumatic open/close- stroke control m.Jaws or air purge	p3	mm	M4	M4
Vise close	p4	mm	M4	M4
Vise open	p5	mm	M4	M4
Air sensing connection	p9	mm	M4	M4
Air sensing outlet (under front plate)	p10	mm	M4	M4

PTH-L-RR

PROTECTED HYDRAULIC TWIN VISE WITH QUICK CHANGE

- Quick jaws change
- Pneumatic open/close control (stroke control) master jaws valve

- Hydraulic version
- PTH-L-RR: Long stroke



proofline® series
fully sealed – low maintenance

Application/customer benefits

- Compact design
- Master jaws guide protected against swarf and chips
- Highest repeatability
- Highest rigidity
- Linear pressure adjustment
- Quick jaws change

Technical features

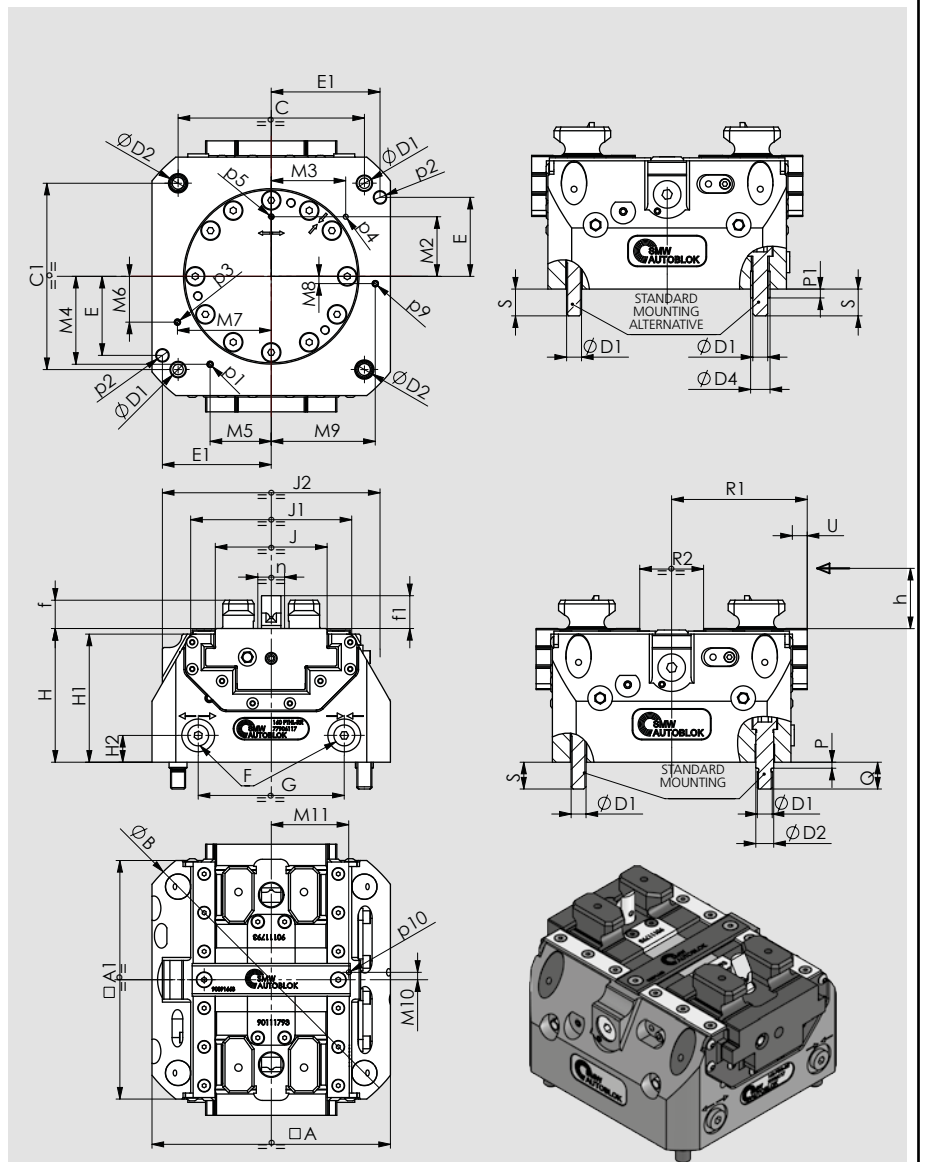
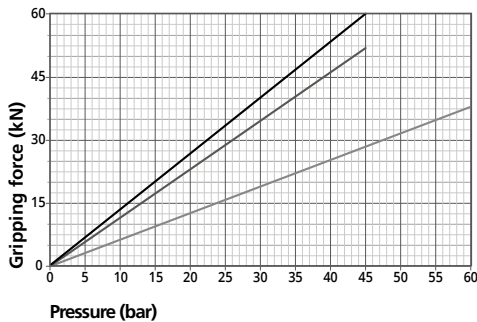
- Housing and functional parts hardened for high precision and long life
- Ready for air purge
- Ready for central grease lubrication
- Quick jaw change master jaw
- OD and ID clamping
- Pneumatic open/close control (stroke control) master jaws valve
- Air sensing
- Lubrication with SMW-Autoblok K67 grease
- Stroke control via proximity switches

Standard equipment

Self-centering vise without top jaws
All bolts and centering bushings included

Gripping force diagrams

PTH-L-RR ■ 160 ■ 200 ■ 250



Subject to technical changes.

PTH-L-RR

- Quick jaws change
- Pneumatic open/close control (stroke control) master jaws valve

- Hydraulic version
- PTH-L-RR: Long stroke

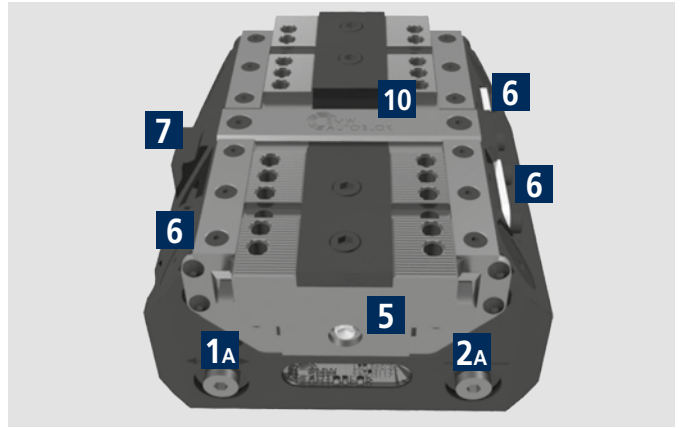
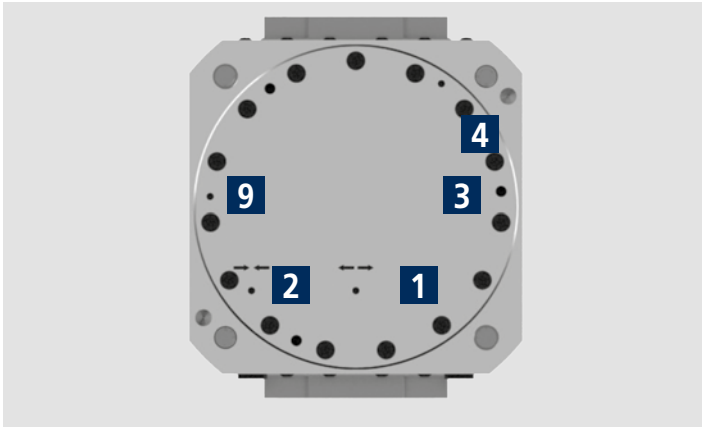
PROTECTED HYDRAULIC TWIN VISE
WITH QUICK CHANGE

Type	Id.No.	Stroke type	Stroke/jaw [mm]	Max clamping force [kN]	Piston area [cm ²]	Max. Operating pressure [bar]	Repeatability [mm]	Weight [kg]
160 PTH-L-RR	77905617	LONG	8,4	19	128	60	0.01	15
200 PTH-L-RR	77905621	LONG	10,2	30	194	45	0.02	25
250 PTH-L-RR	77905621	LONG	15	60	113	45	0.02	35

10

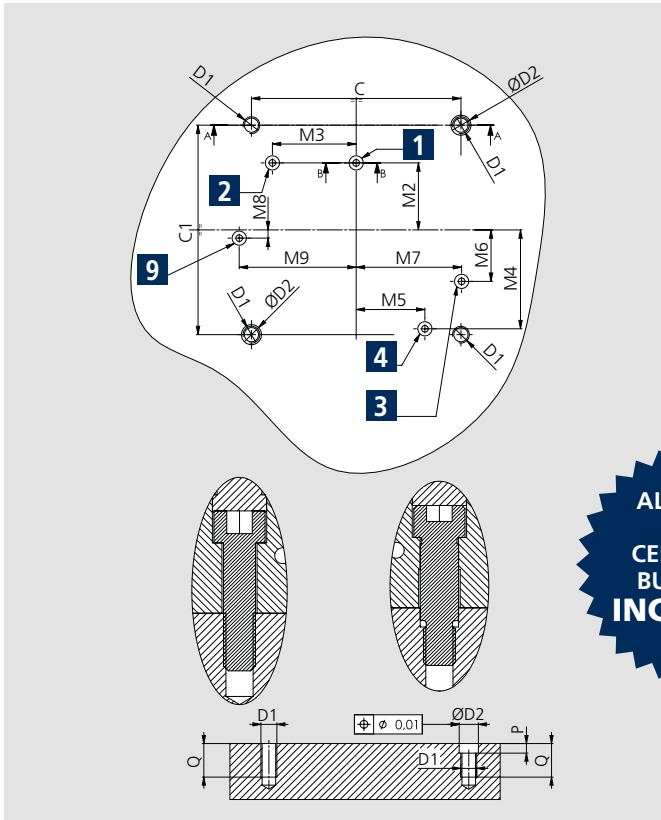
PTH-RR			160	200	250
	A	mm	160	200	210
	A1	mm	160	200	238
	B(Ø)	mm	205	255	300
	C	mm	125	160	180
	C1	mm	125	160	200
	D1(Ø)	mm	M10	M12	M12
	D2 (Øf7)	mm	12	14	14
	D4 (Øjs7)	mm	13	16	16
	E	mm	53	73	80
	E1	mm	73	92	90
	F	mm	G1/8"	G1/8"	G1/8"
	G	mm	98	128	90
	H	mm	89,7	97	105
	H1	mm	86	93	100
	H2	mm	18	18	20
	J	mm	75	94	125
	J1	mm	108	144	180
	J2	mm	146	166	-
	M2	mm	40	50	80
	M3	mm	50	65	45
	M4	mm	59	72,8	89,8
	M5	mm	41	52,9	65,2
	M6	mm	30,7	39,5	0
	M7	mm	62,9	80,9	92
	M8	mm	4,9	9,4	6,7
	M9	mm	69,8	89,5	76,7
	M10	mm	5	8	9
	M11	mm	52	60	78
	P	mm	4	5	5
	P1	mm	6	6	6
	Q	mm	18	20	20
Min/max (long stroke)	R1	mm	82.5/90.9	102.5/112.7	119.5/134.5
Min/max (long stroke)	R2	mm	26/42.8	30/50.4	39/69
	S	mm	18	20	20
Long stroke	U	mm	8.4	10.2	15
	f	mm	19	19	19
	f1	mm	22	22	22
	h	mm	25	35	40
	n (H6)	mm	23	38	48
Lubrication fitting	p1	mm	M5	M5	M5
	p2 (ØH7)	mm	8x14	8x14	10x20
Pneumatic open/close- stroke control m.Jaws or air purge	p3	mm	M5	M5	M5
Vise close	p4	mm	M4	M4	M5
Vise open	p5	mm	M4	M4	M5
Air sensing connection	p9	mm	M5	M5	M5
Air sensing outlet (under front plate)	p10	mm	M4	M4	M5

- Mounting instructions also for the RR version



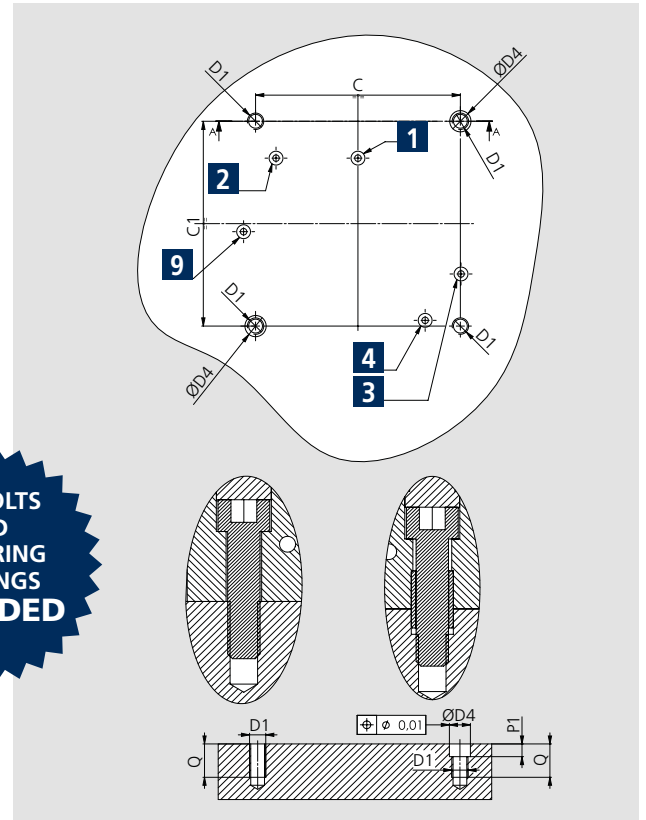
SOLUTION 1 STANDARD

± 0.03 mm to clamping center



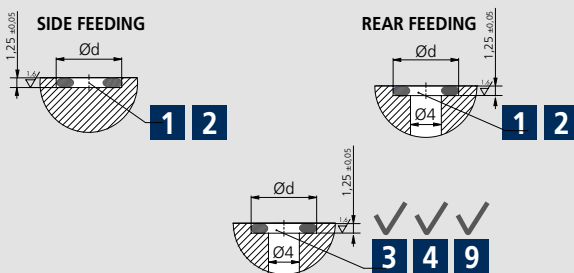
SOLUTION 2 STANDARD

± 0.025 mm to clamping center



ALL BOLTS AND CENTERING BUSHINGS INCLUDED

FEEDING SEATS: OBLIGATED EXECUTION



- 1** Open-Rear feeding
- 2** Closed-Rear feeding
- 3** Pneumatic open / close stroke control or air purge connection*
- 1A** Open-Side feeding
- 2A** Closed-Side feeding
- 4** Central lubrication
- 5** Lubrication fitting
- 6** Proximity switch seats
- 7** Pneumatic open/close -stroke control-m.j.valve (optional)
- 9** Air sensing connection (only bottom)
- 10** Air sensing outlet (under front plate)

*The air purge can be used only without the valve.

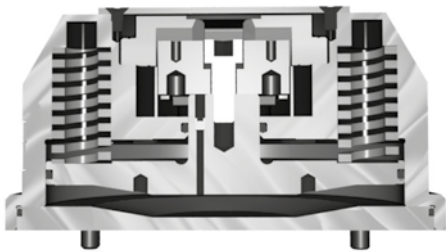
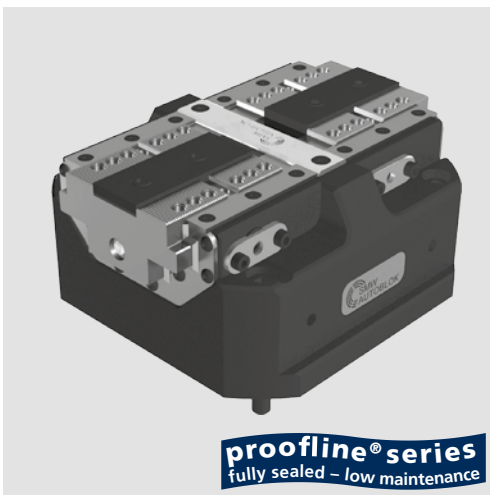
PT	C	C1	D1	D2H7	D4H7	M2	M3	M4	M5	M6	M7	M8	M9	P	P1	Q	Ød	OR
100	80	80	M8	10	11	32	29.5	34.2	27.7	14.2	41.1	7	43	6	6	18	8	OR2018
125	100	100	M8	10	11	32	29.5	40.5	38.5	10.6	54.5	4.8	55.3	6	6	18	8	OR2018
160	125	125	M10	12	13	40	50	59	41	30.7	62.9	4.9	69.8	6	7	21	8	OR2018
200	160	160	M12	14	16	50	65	72.8	52.9	39.5	80.9	9.4	89.5	7	7	24	8.8	OR2021
250	180	200	M12	14	16	80	45	89.8	65.2	0	92	6.7	76.7	7	7	24	8.8	OR2021

STV-2N / STV-2L

Spring and air operated Twin Vise

- Protected and springs clamping
- Pneumatic open / close control (stroke control) master jaws valve

- 2 Jaws
- STV-2N: Normal stroke
- STV-2L: Long stroke



Application/customer benefits

- Compact design
- Linear pressure adjustment
- Highest repeatability
- Highest rigidity

Technical features

- Spring to clamp, pneumatic open
- Protected **1**
- Increase of the clamping force via Turbo function
- Housing and functional parts hardened for high precision and long life
- Ready for air purge
- Master jaws with both tongue & groove and fine serration 1.5 mm x 60°
- OD clamping only
- Safety valve SAB-1 **2** to maintain air pressure during pallet transportation / storage and machining without feed (optional)
- Pneumatic open / close control (stroke control) master jaws valve (optional)
- Lubrication with SMW-AUTOBLOK K67 grease
- Stroke control via proximity switches (optional)
- Air sensing

Standard equipment

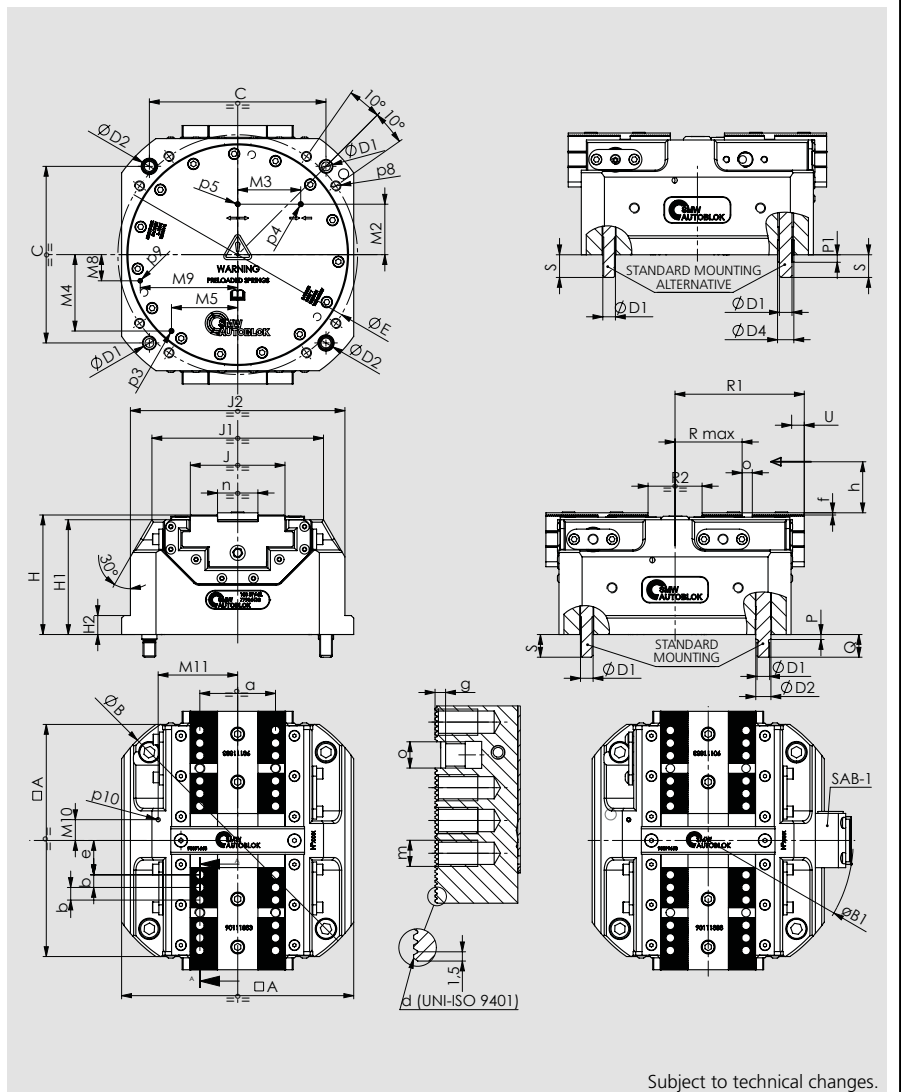
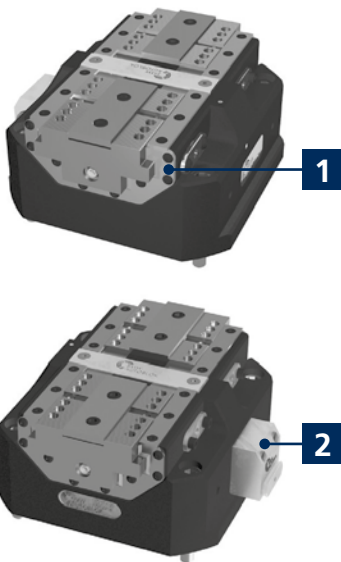
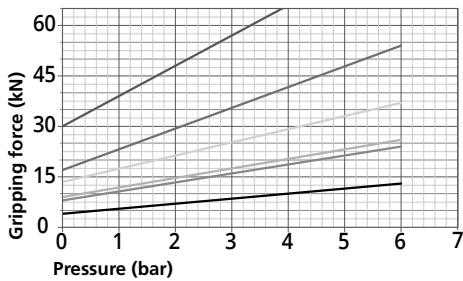
Self-centering vise without top jaws
All bolts and centering bushings included

ROTATION USE

The vise can be used up to maximum 500 rpm only if operated with springs + Turbo system (at minimum 3 bar) and with top jaws weight not higher than the standard ones.

Gripping force diagrams

STV-2N ■ 225 ■ 180 ■ 125
STV-2L □ 225 ■ 180 ■ 125



Subject to technical changes.

STV-2N / STV-2L

- Protected and springs clamping
- Pneumatic open / close control (stroke control) master jaws valve

- 2 jaws
- STV-2N: Normal stroke
- STV-2L: Long stroke

SPRING AND AIR OPERATED SPRING VISE

10

Type	Id. No.	Type stroke	Max. Clamping force middle stroke [kN]		Piston area [cm ²]	Re-opening pressure [bar]	Operating pressure max. [bar]	Min. / max. Operating pressure [bar]	Repeatability [mm]	Weight [kg]
			Only springs	Springs + Turbo						
125 STV-2N	77904312	NORMAL	9	26	78	5	6	-	0.01	7
125 STV-2L	77904412	LONG	4	13						
180 STV-2N	77904318	NORMAL	17	54	170	5	6	-	0.01	17.5
180 STV-2L	77904418	LONG	8	24						
225 STV-2N	77904322	NORMAL	30	66	250	6	4	-	0.02	28
225 STV-2L	77904422	LONG	13.5	37			6			
125 STV-2N + SAB-1	77904812*	NORMAL	-	-	-	-	-	3.5 / 6	-	-
125 STV-2L + SAB-1	77904912*	LONG	-	-	-	-	-	3.5 / 6	-	-
180 STV-2N + SAB-1	77904818*	NORMAL	-	-	-	-	-	3.5 / 6	-	-
180 STV-2L + SAB-1	77904918*	LONG	-	-	-	-	-	3.5 / 6	-	-
225 STV-2N + SAB-1	77904822*	NORMAL	-	-	-	-	-	3.5 / 4	-	-
225 STV-2L + SAB-1	77904922*	LONG	-	-	-	-	-	3.5 / 6	-	-

* Id. No. Twin Vise included the SAB-1. For example, 77904812 is composed by 125STV-2N Id. No. 77904312 plus SAB-1 Id. No. 27581810

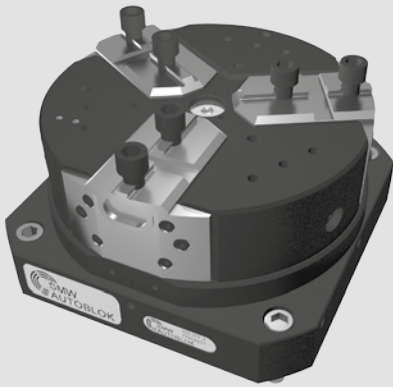
STV-2			125	180	225
	A	mm	125	184	225
	B (Ø)	mm	162	225	284
SAB-1 valve overall dimension	B1 (Ø)	mm	186	230	276
	C	mm	100	140	180
	D1(Ø)	mm	M8	M10	M12
	D2 (Øf7)	mm	10	12	14
	D4 (Øjs7)	mm	11	13	16
	E (ø)	mm	136	190	240
	H	mm	80.5	94.7	102
	H1	mm	77	91	98
	H2	mm		15	15
	J	mm	47	75	94
	J1	mm	100	136	172
	J2	mm	125	170	216
	M2	mm	32	40	50
	M3	mm	29.5	50	65
	M4	mm	40.5	60.5	79
	M5	mm	38.5	52.5	63
	M8	mm	10.6	20.7	15
	M9	mm	54.5	77.3	99.9
	M10	mm	10.5	16.5	15
	M11	mm	46	63	81
	P	mm	4	4	5
	P1	mm	4	6	6
	Q	mm	15	18	20
Min. / max. (long stroke)	R max	mm	25.6 / 31.6	44.8 / 53.2	54.5 / 64.7
Min. / max. (normal stroke)	R max	mm	25.4 / 28	45 / 48	54.5 / 58.7
Min. / max. (long stroke)	R1	mm	64.5 / 70.5	94 / 102.4	114.5 / 124.7
Min. / max. (normal stroke)	R1	mm	64.4 / 67	94.5 / 97.5	114.8 / 119
Min. / max. (long stroke)	R2	mm	20 / 32	26 / 42.8	30 / 50.4
Min. / max. (normal stroke)	R2	mm	19.8 / 25	26 / 32	30.6 / 39
	S	mm	15	18	20
Long stroke	U	mm	6	8.4	10.2
Normal stroke	U	mm	2.6	3	4.2
	a	mm	35	60	80
	b	mm	7	10	10
Serration	d	mm	1.5 x 60°	1.5 x 60°	1.5 x 60°
Min. / max. (long stroke)	e	mm	14.6 / 20.6	18.8 / 27.2	28.5 / 38.7
Min. / max. (normal stroke)	e	mm	14.4 / 17	19 / 22	28.5 / 32.7
	f	mm	1.8	1.8	2
	g	mm	2.7	3.2	4
	h	mm	16	25	35
	m	mm	M6x10	M8x12	M8x12
	n (g6)	mm	20	32	40
	o (H7)	mm	6	8	8
Pneumatic open / close stroke control or air purge	p3	mm	M4	M4	M4
Vise closed	p4	mm	M4	M4	M4
Vise open	p5	mm	M4	M4	M4
	p8	mm	M6x12	M8x16	M10x18
	p9	mm	M4	M4	M4
	p10	mm	M4	M4	M4

STV-3N / STV-3L

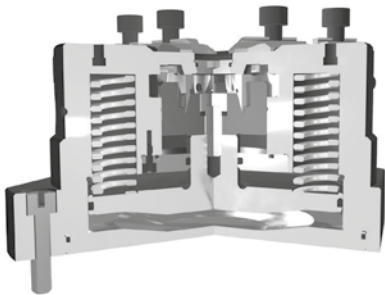
SPRING AND AIR OPERATED TWIN VISE

- Protected and springs clamping
- Pneumatic open / close control (stroke control) master jaws valve

- 3 Jaws
- STV-3N: Normal stroke
- STV-3L: Long stroke



proofline® series
fully sealed – low maintenance



Application/customer benefits

- Compact design
- Master jaws guide protected against swarf and chips
- Highest repeatability
- Highest rigidity

Technical features

- Spring to clamp, pneumatic open
- Protected **1**
- Increase of the clamping force via Turbo function
- Housing and functional parts hardened for high precision and long life
- Ready for air purge
- 3 jaw interfaces: Tongue & groove
- OD clamping only
- Safety valve SAB-1 **2** to maintain air pressure during pallet transportation / storage and machining without feed (optional)
- Pneumatic open / close control (stroke control) master jaws valve (optional)
- Lubrication with SMW-AUTOBLOK K67 grease

Standard equipment

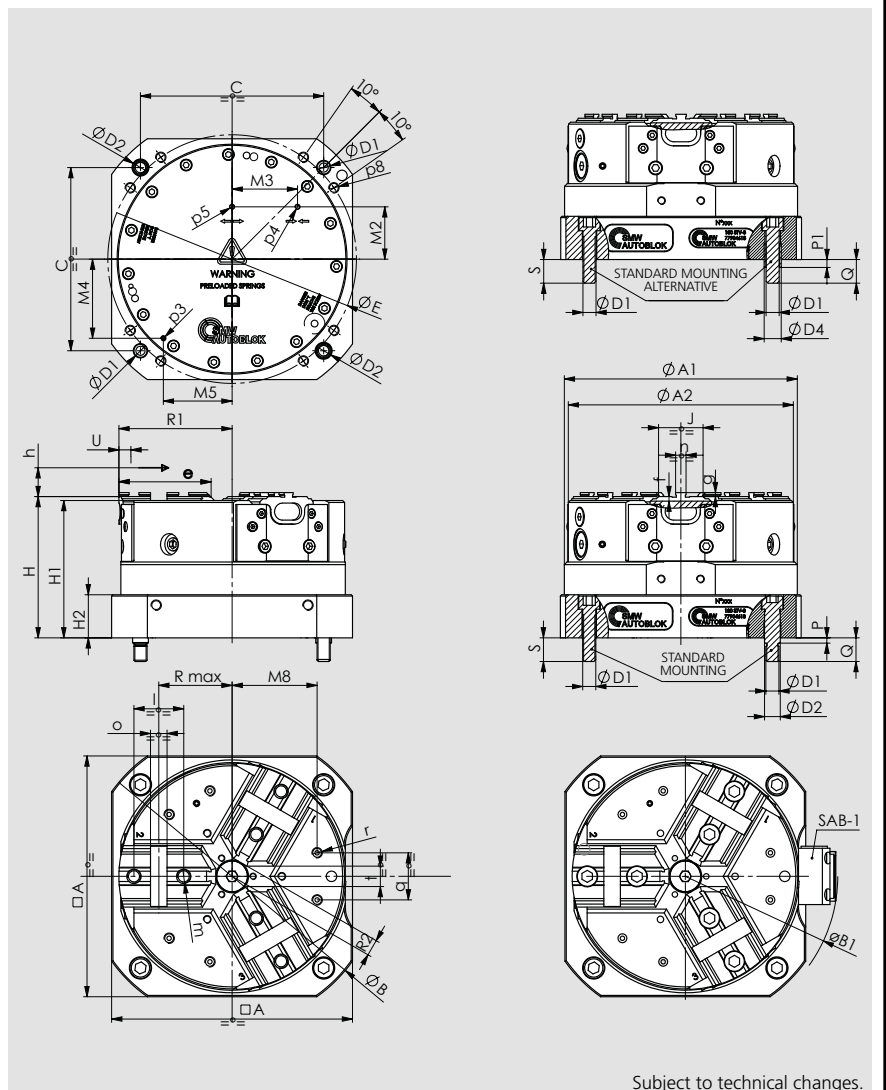
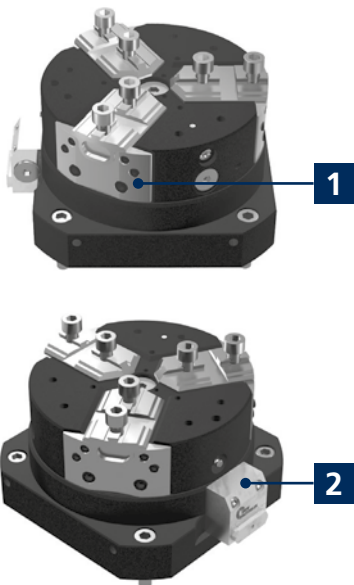
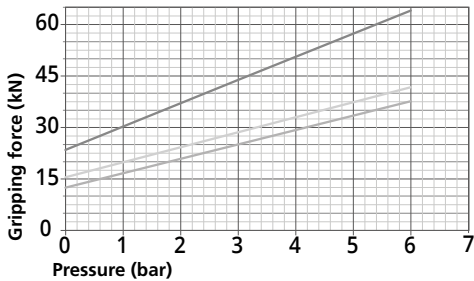
Self-centering vise without top jaws
All bolts and centering bushings included

ROTATION USE

The vise can be used up to max 1000 rpm (standard stroke version) and max 800 rpm (long stroke version) only if operated with springs + Turbo system (at minimum 3 bar) and with top jaws weight not higher than the standard ones.

Gripping force diagrams

STV-3N ■ 225 ■ 180
STV-3L □ 225



Subject to technical changes.

STV-3N / STV-3L

- Protected and springs clamping
- Pneumatic open / close control (stroke control) master jaws valve

- 3 Jaws
- STV-3N: Normal stroke
- STV-3L: Long stroke

SPRING AND AIR OPERATED TWIN VISE

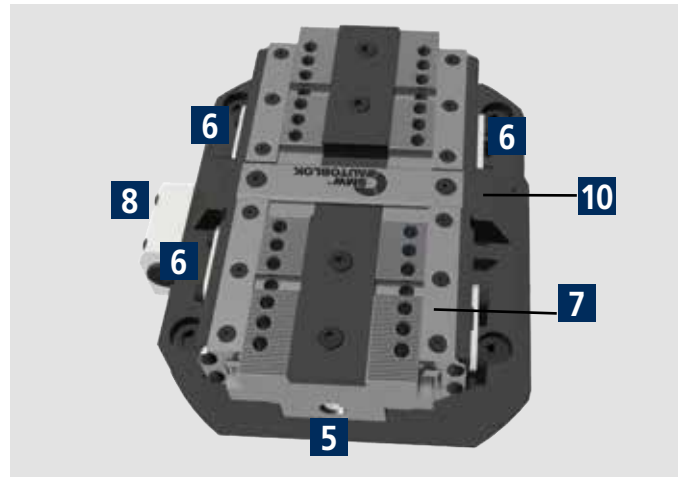
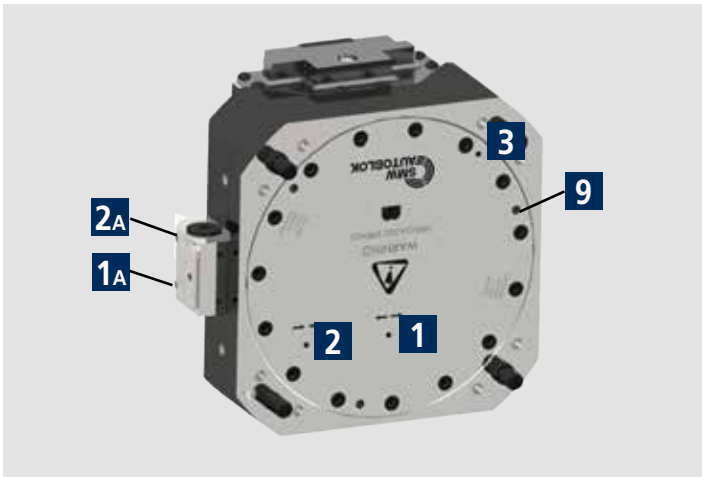
10

Type	Id. No.	Stroke type	Max. clamping force middle stroke [kN]		Stroke / jaw [mm]	Piston area [cm ²]	Re-opening pressure [bar]	Max. operating pressure [bar]	Min. / max. operating pressure [bar]	Weight [kg]
			Only springs	Springs + Turbo						
180 STV-3N	77904618	NORMAL	13	38	3.8	170	5	6	-	18
225 STV-3N	77904622	NORMAL	24	64	4.2	250	6	6	-	29.5
225 STV-3L	77904722	LONG	16	42	8	250	6	6	-	29.5
180 STV-3N + SAB-1	77905018*	NORMAL	-	-	-	-	-	-	3.5 / 6	-
225 STV-3N + SAB-1	77905022*	NORMAL	-	-	-	-	-	-	3.5 / 6	-
225 STV-3L + SAB-1	77905122*	LONG	-	-	-	-	-	-	3.5 / 6	-

* Id. No. Twin Vise included the SAB-1. For example, 77905018 is composed by 180STV-3N Id. No. 77904618 plus SAB-1 Id. No. 27581810

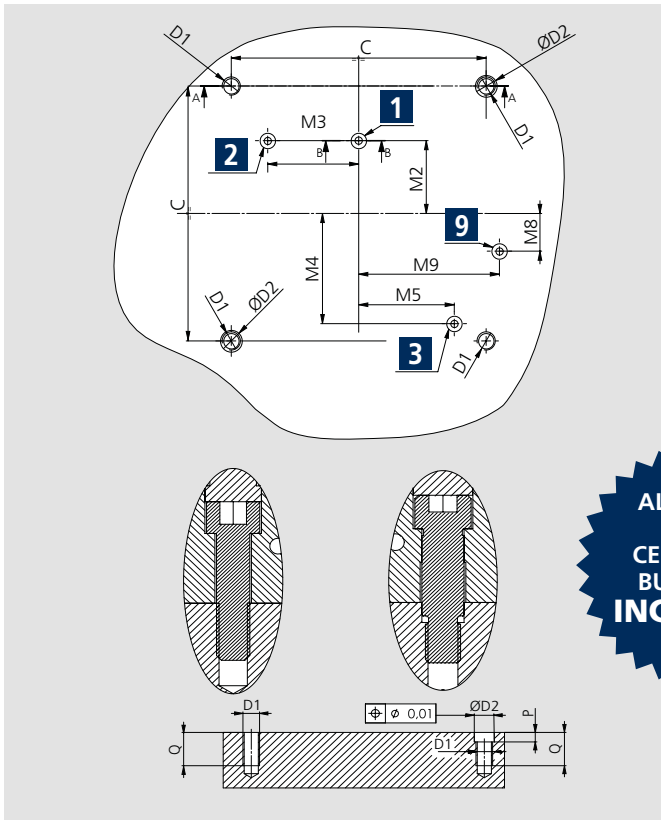
STV-3			180	225
	A	mm	184	225
	A1	mm	178	222
	A2	mm	172	216
	B (Ø)	mm	225	284
SAB-1 valve overall dimension	B1 (Ø)	mm	233	276
	C	mm	140	180
	D1(Ø)	mm	M10	M12
	D2 (Øf7)	mm	12	14
	D4 (Øjs7)	mm	13	16
	E (ø)	mm	190	240
	H	mm	108	115
	H1	mm	105	112
	H2	mm	33	38
	J	mm	34	46
	M2	mm	40	50
	M3	mm	50	65
	M4	mm	60.5	79
	M5	mm	52.5	63
	M8	mm	65	80
	P	mm	4	5
	P1	mm	6	6
	Q	mm	18	20
Min. / max. (normal stroke)	R max	mm	52.2 / 56	67.8 / 72
Min. / max. (normal stroke)	R1	mm	82.7 / 86.5	103.8 / 108
Min. / max. (normal stroke)	R2	mm	8.7 / 12.5	12.8 / 17
Min. / max. (long stroke)	R max	mm	/	68 / 76
Min. / max. (long stroke)	R1	mm	/	104.5 / 112.5
Min. / max. (long stroke)	R2	mm	/	9 / 17
	S	mm	18	20
Normal stroke	U	mm	3,8	4.2
Long stroke	U	mm	/	8
	e	mm	70	87
	f	mm	3.5	3.5
	g	mm	3	3
	h	mm	25	35
	l	mm	38	44.4
	m	mm	M10x12	M12x14
	n (h8)	mm	7.94	7.94
	o (H7)	mm	12.68	12.68
Pneumatic open / close stroke control or air purge	p3	mm	M4	M4
Vise closed	p4	mm	M4	M4
Vise open	p5	mm	M4	M4
	p8	mm	M8x16	M10x18
	q	mm	36	45
	r	mm	M8x10	M8x10
Min. / max. (normal stroke)	t	mm	9 / 15.6	13.5 / 20.9
Min. / max. (long stroke)	t	mm	/	6.8 / 20.9

■ Mounting instructions



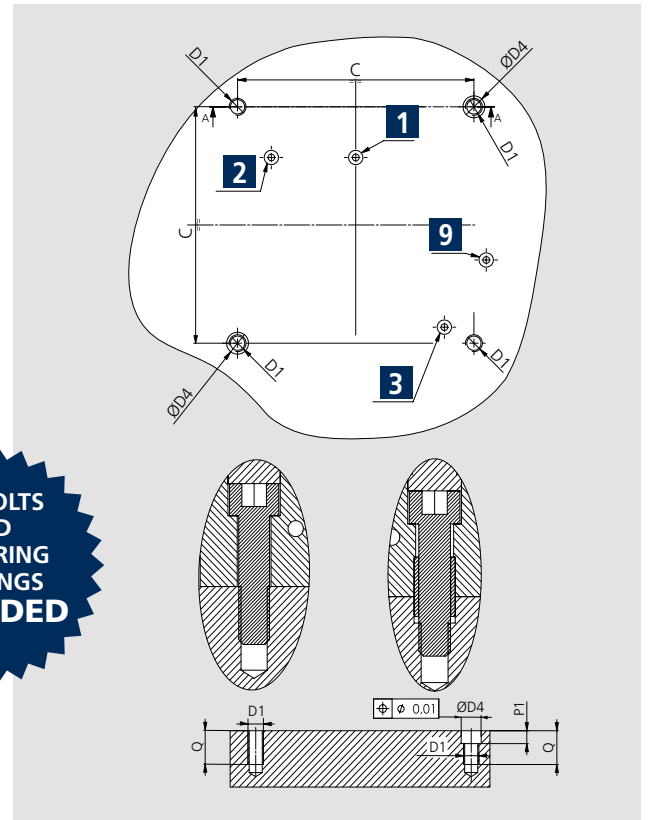
SOLUTION 1 STANDARD

± 0,03 mm to clamping center



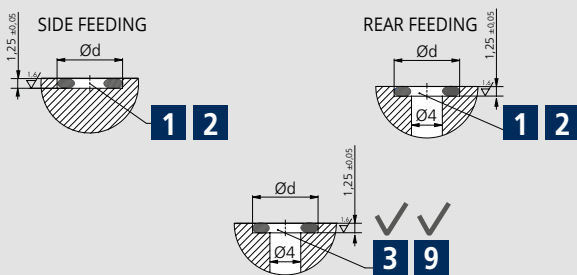
SOLUTION 2 STANDARD

± 0,025 mm to clamping center



ALL BOLTS AND CENTERING BUSHINGS INCLUDED

FEEDING SEATS: OBLIGATED EXECUTION



- 1** Open-Rear feeding
- 2** Closed-Rear feeding
- 3** Pneum.open close stroke control or Air purge*
- 1A** Open-Side feeding
- 2A** Closed-Side feeding
- 5** Lubrication fitting
- 6** Proximity switches seats
- 7** Pneumatic open / close stroke control valve (optional)
- 8** Safety valve SAB-1 (optional)
- 9** Air sensing connection** (only bottom)
- 10** Air sensing outlet** (under front plate)

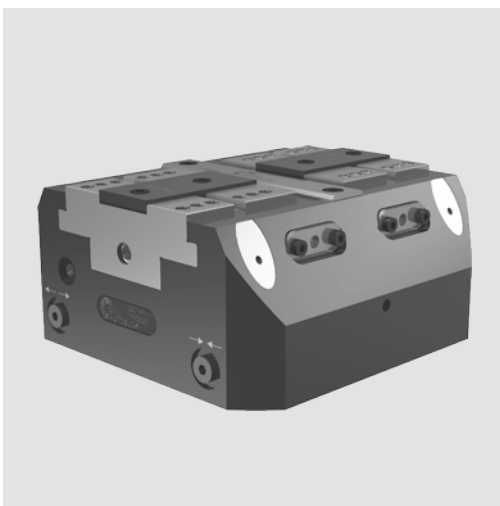
* The air purge can be used only without the valve.
** Points 9 and 10 only available on STV-2.

STV	C	D1	D2H7	D4H7	M2	M3	M4	M5	M8	M9	P	P1	Q	Ød	OR
125	100	M8	10	11	32	29.5	40.5	38.5	10.6	54.5	6	6	18	8	OR2018
180	140	M10	12	13	40	50	60.5	52.5	20.7	77.3	6	7	21	8.8	OR2021
225	180	M12	14	16	50	65	79	63	15	99.9	7	7	24	8.8	OR2021

TVP-N/TVP-L/TVP-F

PNEUMATIC TWIN VISE

- TVP-N: Normal stroke
- TVP-L: Long stroke
- TVP-F: One fixed jaw



Application/customer benefits

- Compact design
- Linear pressure adjustment
- Highest repeatability
- Highest rigidity

Technical features

- H7 quality pilot bore (see p2 below)
- Housing and functional parts hardened for high precision and long life
- Ready for air purge
- Ready for central grease lubrication
- Master jaws with both tongue & groove and fine serration 1.5 mm x 60°
- OD and ID clamping
- Lubrication with SMW-AUTOBLOK K67 grease
- Stroke control via proximity switches (optional)

Standard equipment

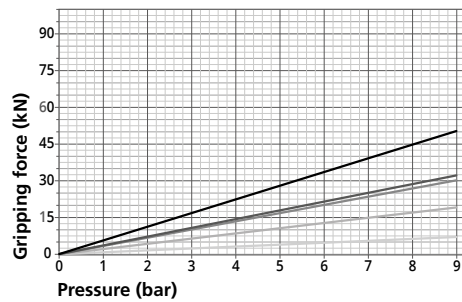
Self-centering vise without top jaws
All bolts and centering bushings included

Gripping force diagrams

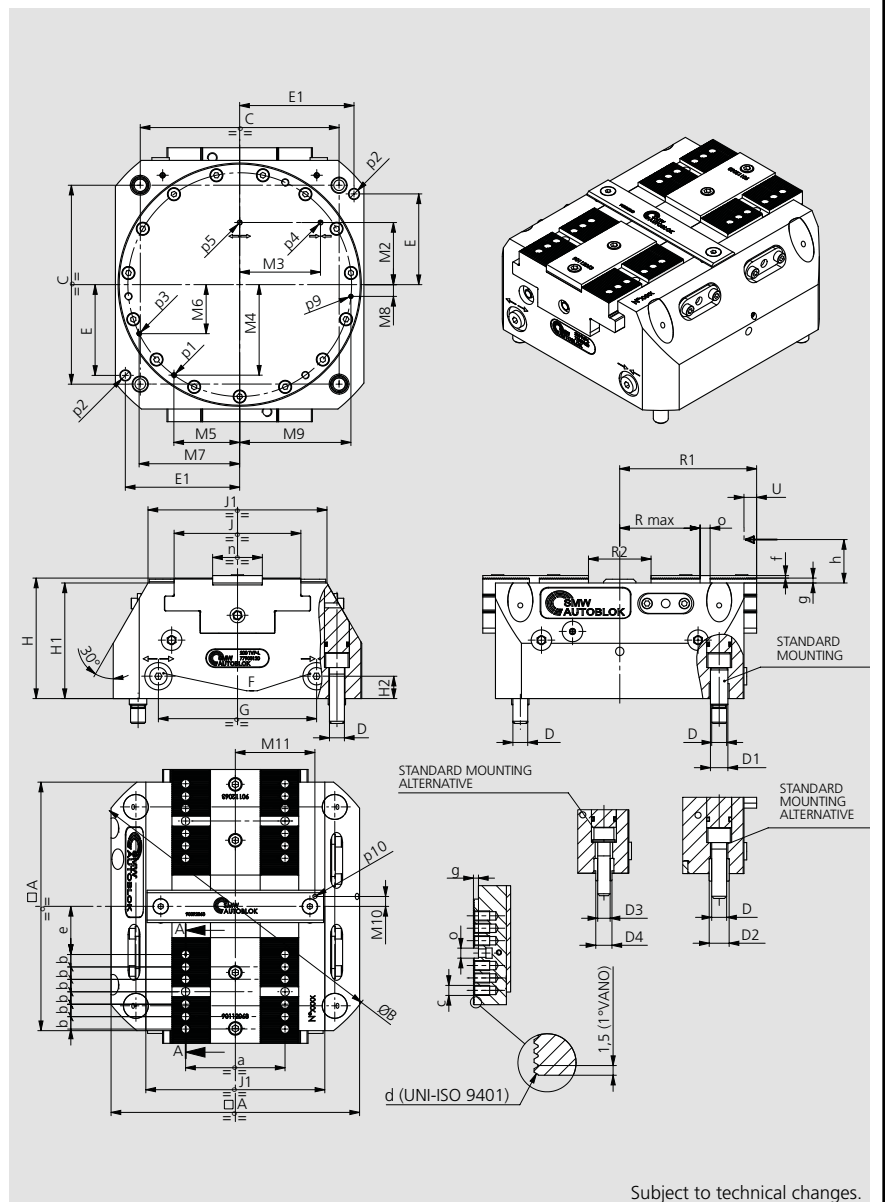
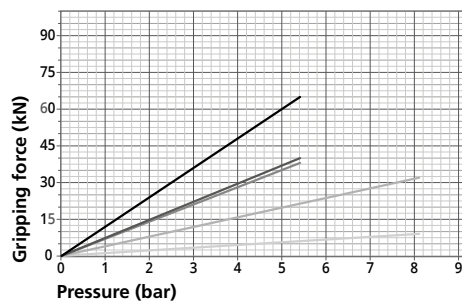
TVP-N 100 160 200 250 315



TVP-L 100 160 200 250 315



TVP-F 100 160 200 250 315



- TVP-N: Normal stroke
- TVP-L: Long stroke
- TVP-F: One fixed jaw

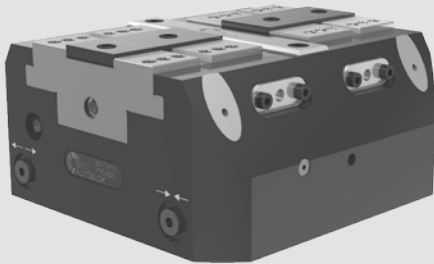
Type	Id. No.	Stroke type	Max. clamping force [kN]	Stroke / jaw [mm]	Operating pressure [bar]	Repeatability [mm]	Weight [kg]
100 TVP-N	77903010	NORMAL	13	2.6	9	0.01	4.3
100 TVP-L	77903110	LONG	7	6	9	0.01	4.3
100 TVP-F	77903210	FIXED JAW	9	6	9	0.01	4.3
160 TVP-N	77903016	NORMAL	40	3	9	0.01	13
160 TVP-L	77903116	LONG	19	8.4	9	0.01	13
160 TVP-F	77903216	FIXED JAW	32	8.4	9	0.01	13
200 TVP-N	77903020	NORMAL	50	4.2	7	0.02	23
200 TVP-L	77903120	LONG	30	10.2	9	0.02	23
200 TVP-F	77903220	FIXED JAW	38	10.2	6	0.02	23
250 TVP-N	77903025	NORMAL	60	5.3	6	0.02	39
250 TVP-L	77903125	LONG	32	15	9	0.02	39
250 TVP-F	77903225	FIXED JAW	40	15	6	0.02	39
315 TVP-N	77903031	NORMAL	100	6.4	6	0.03	84
315 TVP-L	77903131	LONG	50	18	9	0.03	84
315 TVP-F	77903231	FIXED JAW	65	18	6	0.03	84

TVP			100	160	200	250	315
	A	mm	100	160	200	250	315
	B(Ø)	mm	132	205	255	314	394
	C	mm	80	125	160	200	250
	D(Ø)	mm	M8x15	M10x18	M12x20	M12x20	M16x23
	D1 (Øf7)	mm	10x4	12x4	14x5	14x5	18x6
	D2 (Øjs7)	mm	11x4	13x6	16x6	16x6	21x6
	D3	mm	-	-	M10x18	-	-
	D4 (Øjs7)	mm	-	-	13x6	-	-
	E	mm	32	53	73	77	105
	E1	mm	45	73	92	115	140
	F	mm	M5	G1/8"	G1/8"	G1/8"	G1/8"
	G	mm	59.3	99	127.3	157	200.8
	H	mm	75.5	89.7	97	105	139
	H1	mm	72	86	93	100	133
	H2	mm	15	18	18	20	25
	J	mm	47	75	102	125	160
	J1	mm	72	108	144	180	230
	M2	mm	32	40	50	64	80
	M3	mm	29.5	50	65	75	90
	M4	mm	34.2	59	72.8	89.8	117.7
	M5	mm	27.7	41	52.9	65.2	79.4
	M6	mm	14.2	30.7	39.5	48.7	57.8
	M7	mm	41.1	62.9	80.9	99.8	129.7
	M8	mm	8.3	4.9	9.4	11.6	12.4
	M9	mm	42.7	69.8	89.5	110.4	141.5
	M10	mm	5	5	8	11	12
	M11	mm	34	52	64	78	102
Lubrication	p1	mm	M4	M4	M4	M5	M5
	p2 ØH7	mm	6x14	8x14	8x14	10x20	12x20
Air purge	p3	mm	M4	M4	M4	M5	M5
Vise closed	p4	mm	M4	M4	M4	M5	M5
Vise open	p5	mm	M4	M4	M4	M5	M5
Air sensing connection	p9	mm	M4	M4	M4	M5	M5
Air sensing outlet	p10	mm	M4	M4	M4	M6	M6
Min. / max. (long stroke)	R2	mm	20 / 32	26 / 42.8	30 / 50.4	39 / 69	50 / 86
Min. / max. (long stroke)	R1	mm	50 / 56	82.5 / 90.9	100 / 110.2	119.5 / 134.5	151.5 / 169.5
Min. / max. (long stroke)	Rmax	mm	25.6 / 31.6	44.8 / 53.2	54.5 / 64.7	51.5 / 66.5	81.5 / 99.5
Min. / max. (normal stroke)	R2	mm	19.8 / 25	26 / 32	30.6 / 39	34.4 / 45	49.2 / 62
Min. / max. (normal stroke)	R1	mm	47.4 / 50	82.5 / 85.5	95.8 / 100	119.7 / 125	151.1 / 157.5
Min. / max. (normal stroke)	Rmax	mm	25.4 / 28	45 / 48	54.5 / 58.7	55.7 / 61	87.1 / 93.5
Min. / max. (fixed jaw)	R2	mm	20 / 26	26 / 34.4	30 / 40.2	39 / 54	56 / 74
Min. / max. (fixed jaw)	R1	mm	50 / 56	82.5 / 90.9	100 / 110.2	119.5 / 134.5	151.5 / 169.5
Min. / max. (fixed jaw)	Rmax	mm	25.6 / 31.6	44.8 / 53.2	54.5 / 64.7	51.5 / 66.5	81.5 / 99.5
Long stroke	U	mm	6	8.4	10.2	15	18
Normal stroke	U	mm	2.6	3	4.2	5.3	6.4
Fixed jaw stroke	U	mm	6	8.4	10.2	15	18
	a	mm	35	60	80	90	120
	b	mm	7	10	10	12	15
	c	mm	M6x10	M8x12	M8x12	M10x15	M12x17
Serration	d	mm	1.5 x 60°	1.5 x 60°	1.5 x 60°	1.5 x 60°	1.5 x 60°
Min. / max. (normal stroke)	e	mm	14.4 / 17	19 / 22	28.5 / 32.7	24.7 / 30	33.1 / 39.5
Min. / max. (long stroke)	e	mm	14.6 / 20.6	18.8 / 27.2	28.5 / 38.7	32.5 / 47.5	42.5 / 60.5
Min. / max. (fixed jaw)	e	mm	14.6 / 20.6	18.8 / 27.2	28.5 / 38.7	32.5 / 47.5	42.5 / 60.5
	f	mm	1.8	1.8	2	2.5	2.5
	g	mm	2.7	3.2	4	4	4
	h	mm	16	25	35	40	40
	o (H7)	mm	6	8	8	10	12
	n (g6)	mm	20	32	40	50	60

TVH-N/TVH-L/TVH-F

HYDRAULIC TWIN VISE

- TVH-N: Normal stroke
- TVH-L: Long stroke
- TVH-F: One fixed jaw



Application/customer benefits

- Compact design
- Linear pressure adjustment
- Highest repeatability
- Highest rigidity

Technical features

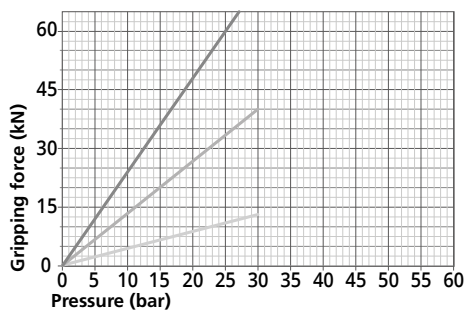
- H7 quality pilot bore (see p2 below)
- Housing and functional parts hardened for high precision and long life
- Ready for air purge
- Ready for central grease lubrication
- Master jaws with both tongue & groove and fine serration 1.5 mm x 60°
- OD and ID clamping
- Lubrication with SMW-AUTOBLOK K67 grease
- Stroke control via proximity switches (optional)

Standard equipment

Self-centering vise without top jaws
All bolts and centering bushings included

Gripping force diagrams

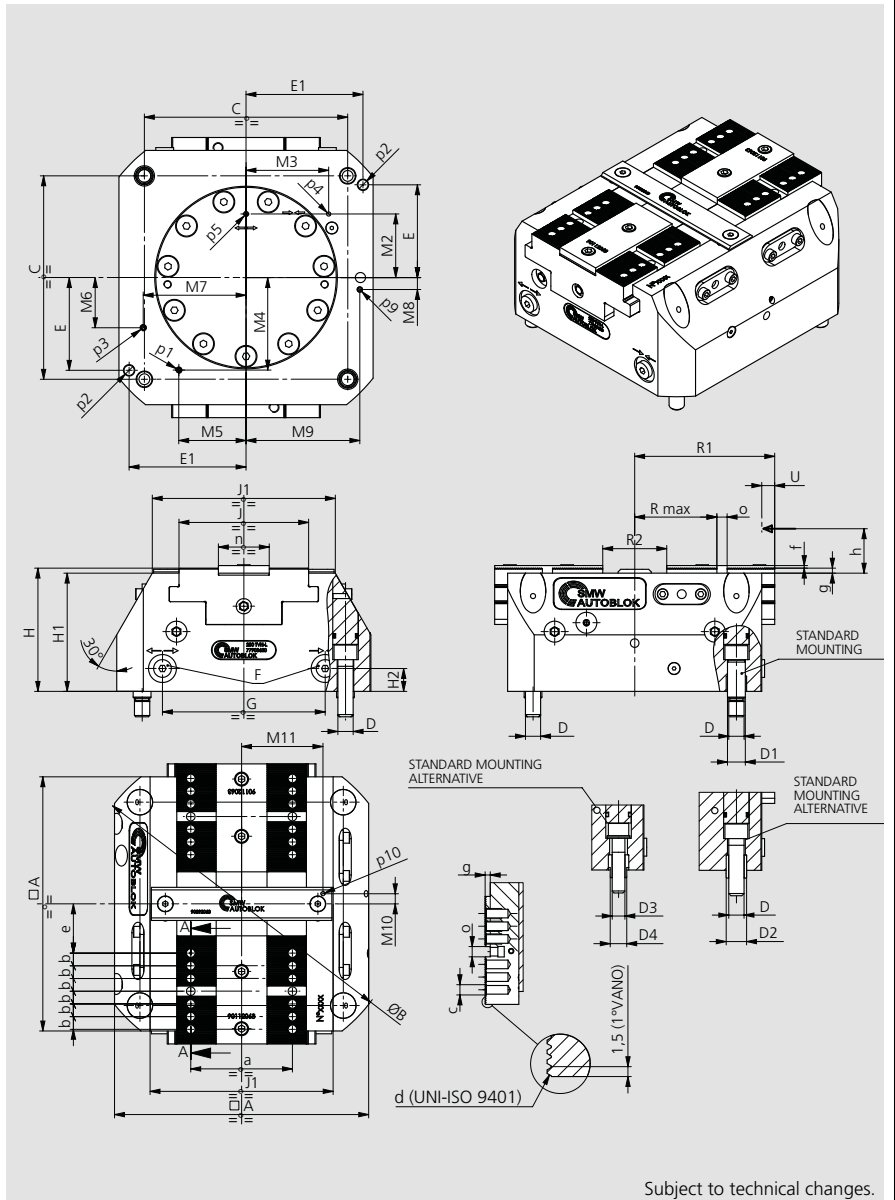
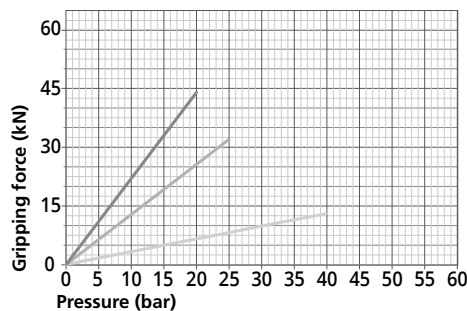
TVH-N □ 100 ■ 160 ■ 200



TVH-L □ 100 ■ 160 ■ 200



TVH-F □ 100 ■ 160 ■ 200



Subject to technical changes.

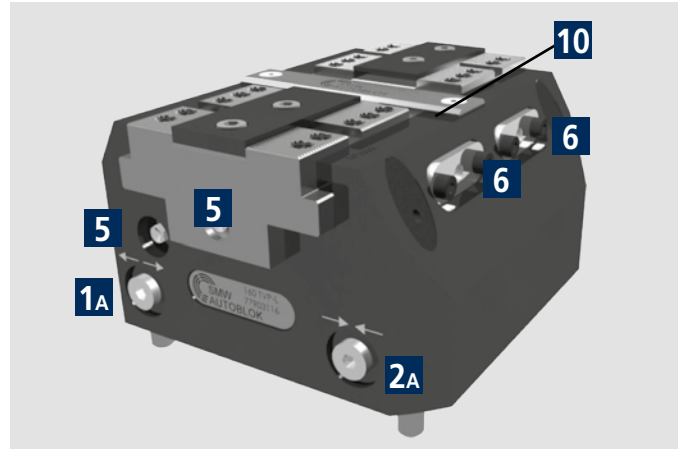
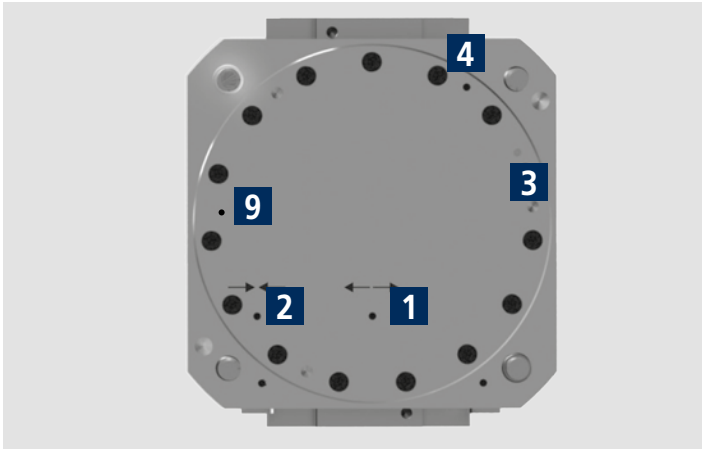
- TVH-N: Normal stroke
- TVH-L: Long stroke
- TVH-F: One fixed jaw

HYDRAULIC TWIN VISE

Type	Id. No.	Stroke type	Max. clamping force [kN]	Stroke / jaw [mm]	Max. operating pressure [bar]	Repeatability [mm]	Weight [kg]
100 TVH-N	77903510	NORMAL	13	2.6	30	0.01	4.5
100 TVH-L	77903610	LONG	13	6	60	0.01	4.5
100 TVH-F	77903710	FIXED JAW	13	6	40	0.01	4.5
160 TVH-N	77903516	NORMAL	40	3	30	0.01	14
160 TVH-L	77903616	LONG	38	8.4	60	0.01	14
160 TVH-F	77903716	FIXED JAW	32	8.4	25	0.01	14
200 TVH-N	77903520	NORMAL	60	4.2	25	0.02	25
200 TVH-L	77903620	LONG	52	10.2	45	0.02	25
200 TVH-F	77903720	FIXED JAW	44	10.2	20	0.02	25

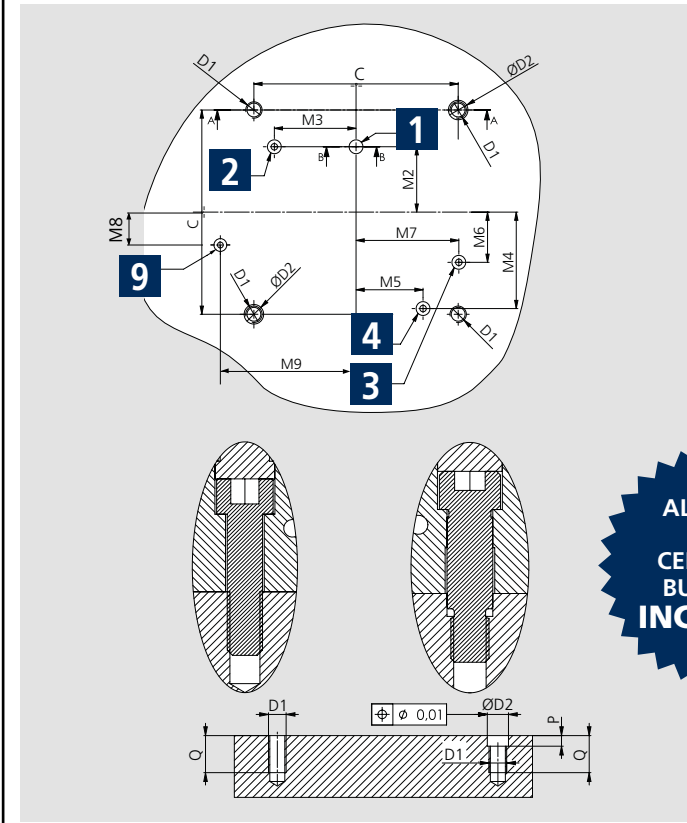
TVH		100	160	200	
	A	mm	100	160	200
	B(Ø)	mm	132	205	255
	C	mm	80	125	160
	D(Ø)	mm	M8x15	M10x18	M12x20
	D1 (Øf7)	mm	10x4	12x4	14x5
	D2 (Øjs7)	mm	11x4	13x6	16x6
	D3	mm	-	-	M10x18
	D4 (Øjs7)	mm	-	-	13x6
	E	mm	32	53	73
	E1	mm	45	73	92
	F	mm	G1/8"	G1/8"	G1/8"
	G	mm	55	98	128
	H	mm	75.5	89.7	97
	H1	mm	72	86	93
	H2	mm	15	18	18
	J	mm	47	75	102
	J1	mm	72	108	144
	M2	mm	32	40	50
	M3	mm	29.5	50	65
	M4	mm	34.2	59	72.8
	M5	mm	27.7	41	52.9
	M6	mm	14.2	30.7	39.5
	M7	mm	41.1	62.9	80.9
	M8	mm	8.3	4.9	9.4
	M9	mm	42.7	69.8	89.5
	M10	mm	5	5	8
	M11	mm	34	52	64
Lubrication	p1	mm	M4	M5	M5
	p2 ØH7	mm	6x14	8x14	8x14
Air purge	p3	mm	M4	M5	M5
Vise closed	p4	mm	M4	M4	M4
Vise open	p5	mm	M4	M4	M4
Air sensing connection	p9	mm	M4	M5	M5
Air sensing outlet	p10	mm	M4	M4	M4
Min. / max. (long stroke)	R2	mm	20 / 32	26 / 42.8	30 / 50.4
Min. / max. (long stroke)	R1	mm	50 / 56	82.5 / 90.9	100 / 110.2
Min. / max. (long stroke)	Rmax	mm	25.6 / 31.6	44.8 / 53.2	54.5 / 64.7
Min. / max. (normal stroke)	R2	mm	19.8 / 25	26 / 32	30.6 / 39
Min. / max. (normal stroke)	R1	mm	47.4 / 50	82.5 / 85.5	95.8 / 100
Min. / max. (normal stroke)	Rmax	mm	25.4 / 28	45 / 48	54.5 / 58.7
Min. / max. (fixed jaw)	R2	mm	20 / 26	26 / 34.4	30 / 40.2
Min. / max. (fixed jaw)	R1	mm	50 / 56	82.5 / 90.9	100 / 110.2
Min. / max. (fixed jaw)	Rmax	mm	25.6 / 31.6	44.8 / 53.2	54.5 / 64.7
Long stroke	U	mm	6	8.4	10.2
Normal stroke	U	mm	2.6	3	4.2
Fixed jaw stroke	U	mm	6	8.4	10.2
	a	mm	35	60	80
	b	mm	7	10	10
	c	mm	M6x10	M8x12	M8x12
Serration	d	mm	1.5 x 60°	1.5 x 60°	1.5 x 60°
Min. / max. (normal stroke)	e	mm	14.4 / 17	19 / 22	28.5 / 32.7
Min. / max. (long stroke)	e	mm	14.6 / 20.6	18.8 / 27.2	28.5 / 38.7
Min. / max. (fixed jaw)	e	mm	14.6 / 20.6	18.8 / 27.2	28.5 / 38.7
	f	mm	1.8	1.8	2
	g	mm	2.7	3.2	4
	h	mm	16	25	35
	o (H7)	mm	6	8	8
	n (g6)	mm	20	32	40

■ Mounting instructions



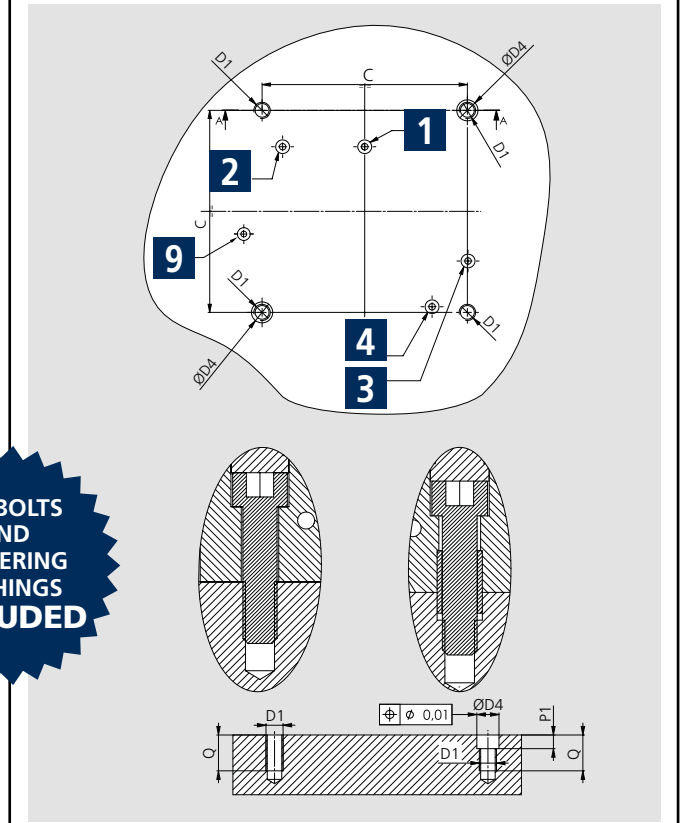
SOLUTION 1 STANDARD

± 0.03 mm to clamping center



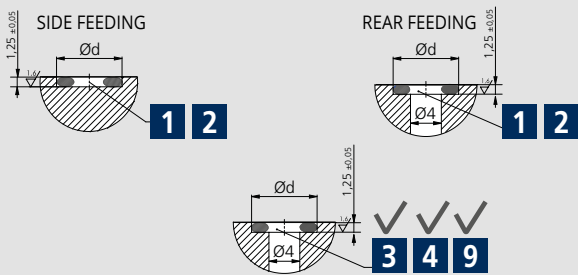
SOLUTION 2 STANDARD

± 0.025 mm to clamping center



ALL BOLTS AND CENTERING BUSHINGS INCLUDED

FEEDING SEATS: OBLIGATED EXECUTION



- 1** Open-Rear feeding
- 2** Closed-Rear feeding
- 3** Air purge
- 1A** Open-Side feeding
- 2A** Closed-Side feeding
- 4** Central lubrication
- 5** Lubrication fitting
- 6** Proximity switches seats
- 9** Air sensing connection
- 10** Air sensing outlet

TV	C	D1	D2H7	D4H7	M	M1	M2	M3	M4	M5	M6	M7	M8	M9	P	P1	Q	V	Z	Ød	OR
100	80	M8	10	11	45	29	32	29.5	34.2	27.7	14.2	41.1	8.3	42.7	6	6	18	37.3	96.5	8	OR2018
160	125	M10	12	13	69	48	40	50	59	41	30.7	62.9	4.9	69.8	6	7	21	50	155	8	OR2018
200	160	M12	14	16	88	62	50	65	72.8	52.9	39.5	80.9	9.4	89.5	7	7	24	62	195	8.8	OR2021
250	200	M12	14	16	113	77	64	75	89.8	65.2	48.6	99.8	11.6	110.4	7	7	24	80	239	8.8	OR2021
315	250	M15	18	21	-	-	80	90	115.7	84	62.7	128.5	12.4	141.5	8	7	27	-	-	8.8	OR2021

Safety valve SAB-1 (OPTIONAL)



Industry 4.0
Product

1 FEATURES

- ▶ Safety valve SAB-1 to maintain air pressure during pallet transportation/storage and machining without feed
- ▶ Easy and smart opening of the vise by air gun
- ▶ TURBO function to increase the clamping forces

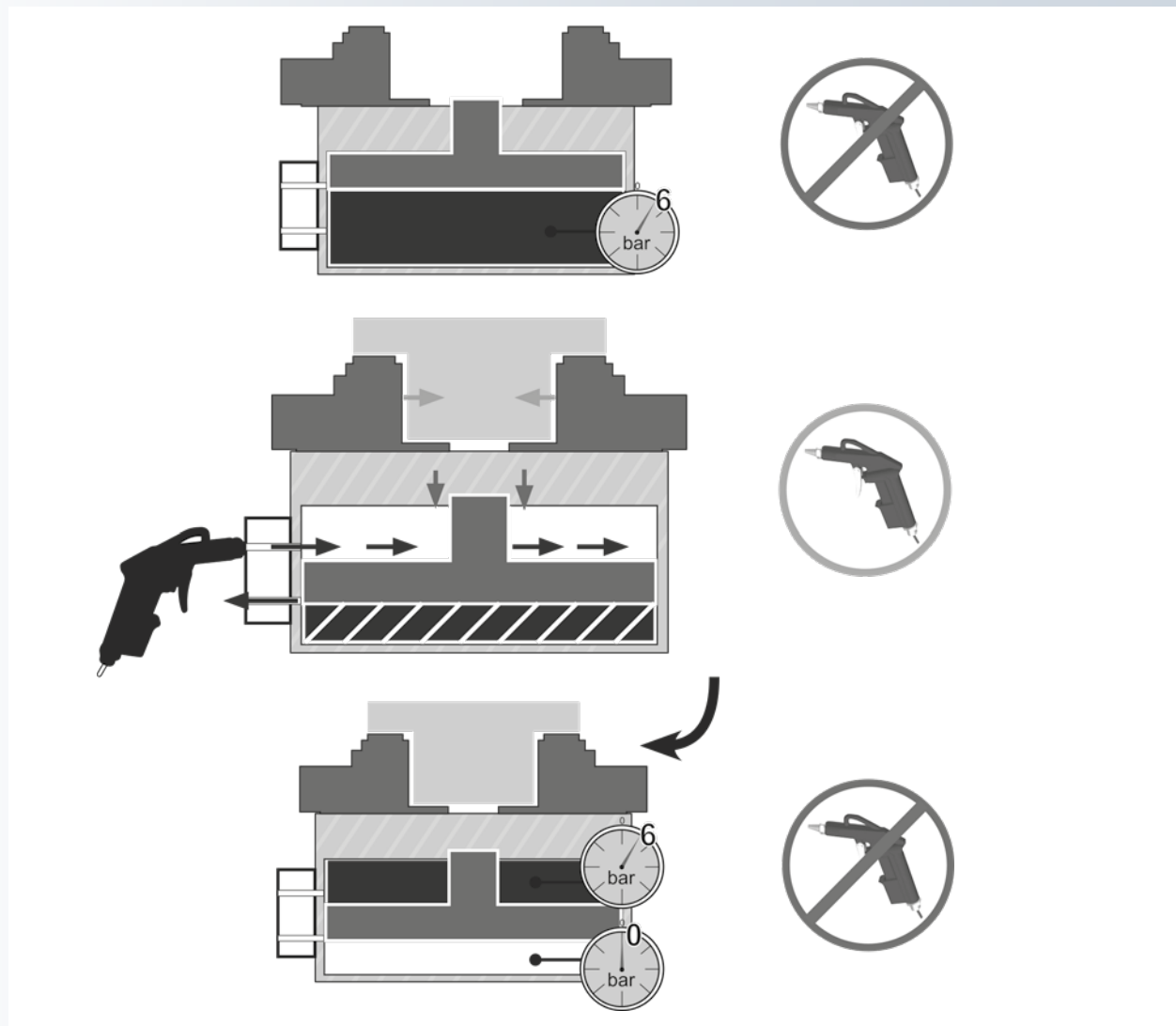
ONLY FOR
STV-2
STV-3

PNEUMATIC GUN

WITH STEEL NOZZLE



2 OPERATION



10

3 MOUNTING

IN CASE OF SEPARATE PURCHASE

- ▶ **3.1** Before install the **SAB-1** please remember to remove the two set screws, because from factory default setting, the air connection is ready to be used from the bottom side.
- ▶ **3.2** After that you need close the two holes located on the bottom side using the same set screws or an o-ring.

If the **SAB-1** is purchased together with the **Twin Vises**, the assembly and adjustment are done by **SMW-Autoblok** personnel at our factories.

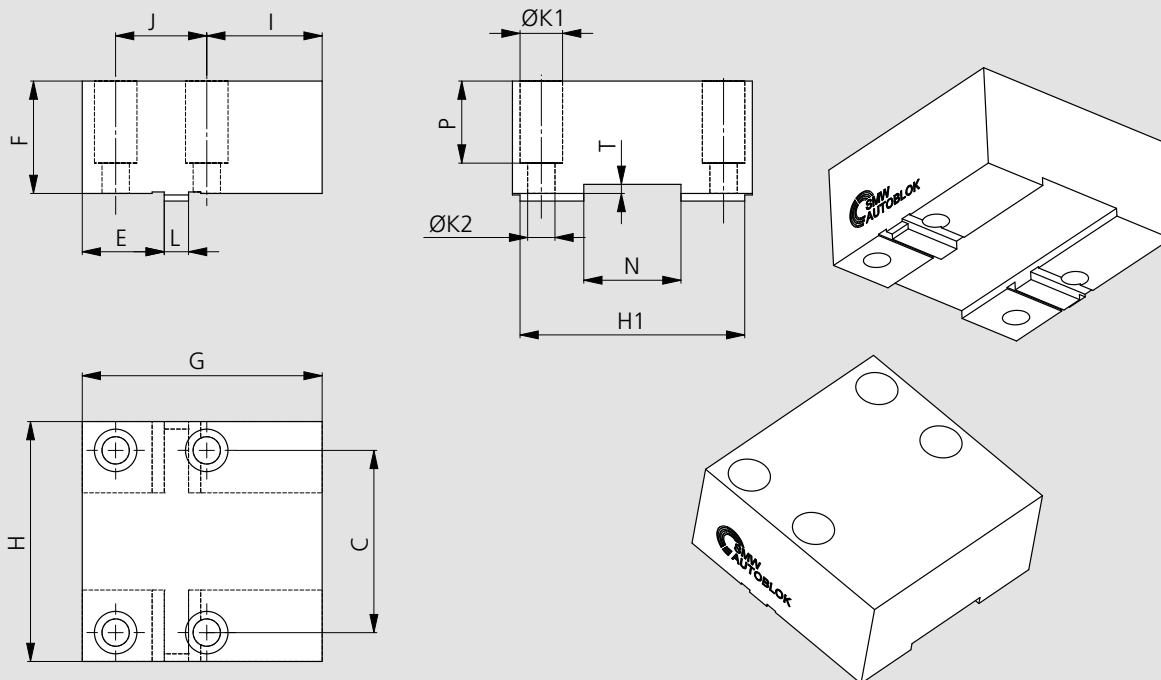


SOFT TOP JAWS

for Twin Vises

- Soft blank top jaws
- Tongue & Groove

Material: C40 UNI7847

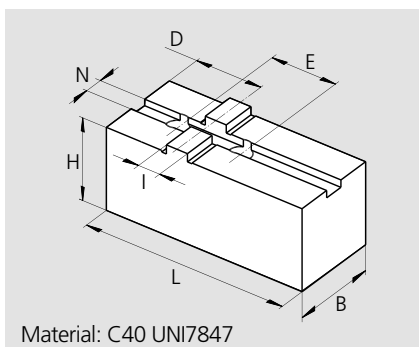


Subject to technical changes.

SOFT BLANK TOP JAWS, TONGUE & GROOVE

Type	Id. No.*	C	E	F	G	H	H1	I	J	K1	K2	L	N	P	T	Clamping range [mm]	Weight [kg]
100 TV / PT	90711063	35	18	27.5	49	54.5	45	21	21	11	7	6h7	20h8	20	3	0 - 70	0.5
125 STV-2 / PT	90711283	35	33	27.5	64	54.5	45	21	35	11	7	6h7	20h8	20	3	0 - 100	0.65
100 TV / PT	90721063	35	18	47.5	49	54.5	45	21	21	11	7	6h7	20h8	40	3	0 - 70	0.85
125 STV-2 / PT	90721283	35	33	47.5	64	54.5	45	21	35	11	7	6h7	20h8	40	3	0 - 100	1.15
160 TV / PT	90711663	60	27	37	79	79	74	38	30	14	9	8h7	32h8	27	3	0 - 120	1.6
180 STV-2 / PT	90711883	60	41	37	93	79	74	38	40	14	9	8h7	32h8	27	3	0 - 140	1.9
160 TV / PT	90721663	60	27	76.5	79	79	74	38	30	14	9	8h7	32h8	66.5	3	0 - 120	3.3
180 STV-2 / PT	90721883	60	41	76.5	93	79	74	38	40	14	9	8h7	32h8	66.5	3	0 - 140	4
200 TV / PT	90712063	80	37	47	98.5	109	92	47.5	40	14	9	8h7	40h8	37	3.5	0 - 150	3.6
200 TV / PT	90722063	80	37	86.5	98.5	109	92	47.5	40	14	9	8h7	40h8	76.5	3.5	0 - 150	6.8
225 STV-2	90712283	80	52	47	113.5	109	92	47.5	50	14	9	8h7	40h8	37	3.5	0 - 170	4.2
225 STV-2	90722283	80	52	86.5	113.5	109	92	47.5	50	14	9	8h7	40h8	76.5	3.5	0 - 170	7.9
250 TV	90712563	90	59	47	120	124	/	44	48	18	11	10h7	50h8	31	3.5	0 - 180	5
250 TV	90722563	90	59	97.5	120	124	/	44	48	18	11	10h7	50h8	81.5	3.5	0 - 180	10.5
315 TV	90713163	120	54	57	150	160	/	75	60	20	13.5	12h7	60h8	42	3.5	0 - 240	10
315 TV	90723163	120	54	102.5	150	160	/	75	60	20	13.5	12h7	60h8	87.5	3.5	0 - 240	18

*The Id. No. refers to one single piece.



TONGUE & GROOVE SOFT BLANK TOP JAWS "C" FOR TWIN VISE STV-3

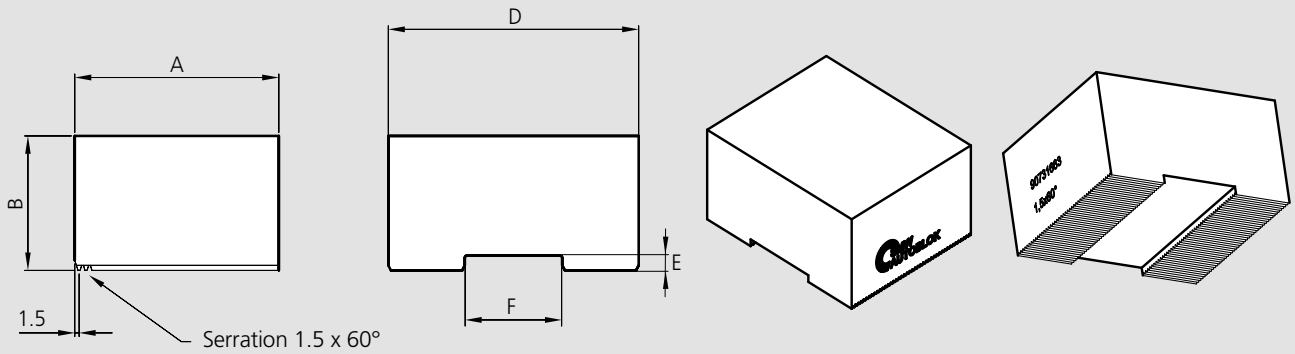
Type	Id. No.*	B	H	L	N	D	E	I	Clamping range [mm]	Weight [kg]
180 STV-3	12041660	30	32	80	7.94	30	38.1	12.68	0 - 140	0.58
225 STV-3	12042060	35	37	100	7.94	35	44.4	12.68	0 - 170	0.92

*The Id. No. refers to one single piece.

- Soft blank top jaws
- Fine serration 1.5mmx60°

for Twin Vises

Material: C40 UNI7847



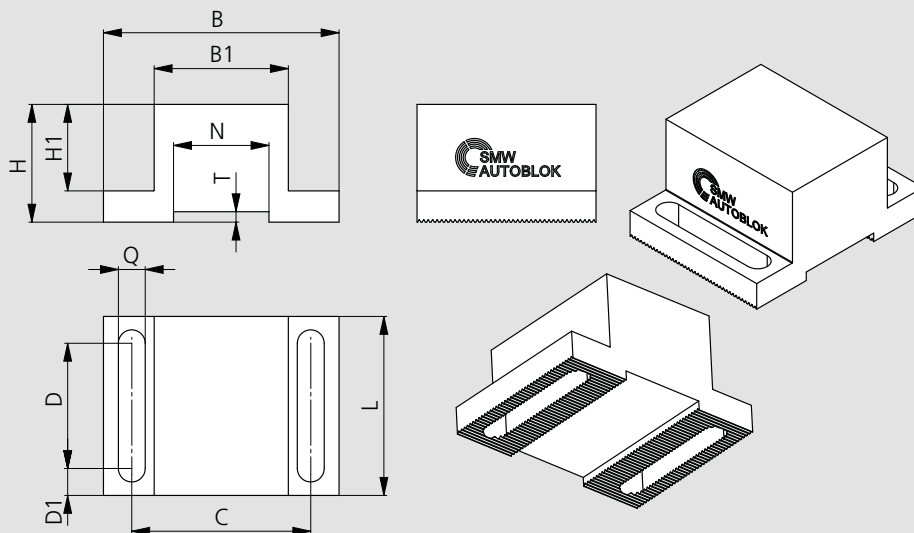
Subject to technical changes.

SOFT BLANK TOP JAWS, FINE SERRATION 1.5 mm x 60°

Type	Id. No.*	A	B	D	E	F	Weight [kg]
100-125 TV	90731063	42	29.5	54.5	3.5	20H8	0.5
100-125 TV	90741063	47	49.5	54.5	3.5	20H8	0.95
160-180 TV	90731663	66	39.5	79	3.5	32H8	1.5
160-180 TV	90741663	76	79	79	3.5	32H8	3.6
200-225 TV	90732063	87	49.5	109	4	40H8	3.5
200-225 TV	90742063	87	89	109	4	40H8	6.5
250 TV	90732563	108	49.5	124	4	50H8	5
250 TV	90742563	108	99	124	4	50H8	10.2
315 TV	90733163	160	49.5	160	4	60H8	9.6
315 TV	90743163	160	105	160	4	60H8	20.7

*The Id. No. refers to one single piece.

Material: C40 UNI7847



Subject to technical changes.

SOFT BLANK TOP JAWS, FINE SERRATION 1.5 mm x 60°

Type	Id. No.*	B	B1	C	D	D1	H	H1	L	N	Q	T	Weight [kg]
100-125 TV	90751063	54.5	24	35	30	6	29.5	21.5	42	20H8	6.6	3.5	0.25
160-180 TV	90751663	79	45	60	42	9	39.5	29	60	32H8	9	3.5	0.9
200-225 TV	90752063	109	65	80	62	9	49.5	39	80	40H8	9	4	2
250 TV	90752563	124	72	90	62	14	49.5	33	90	50H8	11	4	2.7
315 TV	90753163	160	90	120	82	12	49.5	31.5	106	60H8	13.5	4	4.2

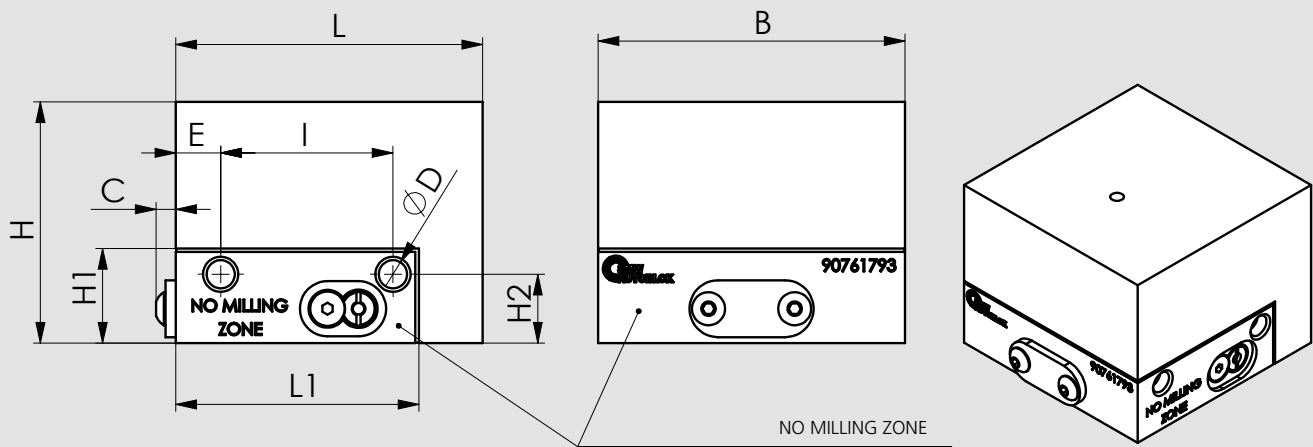
*The Id. No. refers to one single piece.

SOFT TOP JAWS

for Twin Vises PT-RR

■ Soft top jaws QUICK CHANGE

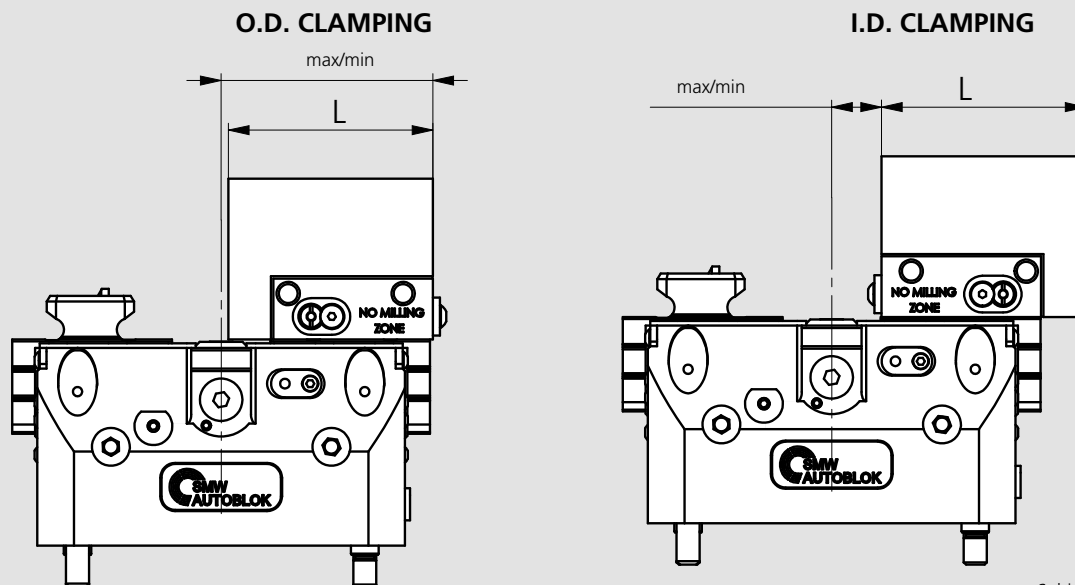
Material: C40 UNI7847



Subject to technical changes

Type	Id. No.*	B	C	ϕD	E	H	H1	H2	I	L	L1	Weight [kg]
160 PT-RR	90711793	89	6	8,2	13	70	27	20	50	89	70	4
160 PT-RR	90721793	89	6	8,2	13	110	27	20	50	89	70	6,5
200 PT-RR	90712193	109	6	8,2	29	80	27	20	50	109	89	7
200 PT-RR	90722193	109	6	8,2	29	120	27	20	50	109	89	11
250 PT-RR	90712643	139	0	8,2	40	90	27	20	50	130	100	12
250 PT-RR	90722643	139	0	8,2	40	140	27	20	50	130	100	19

*The Id.no. refers to one single piece

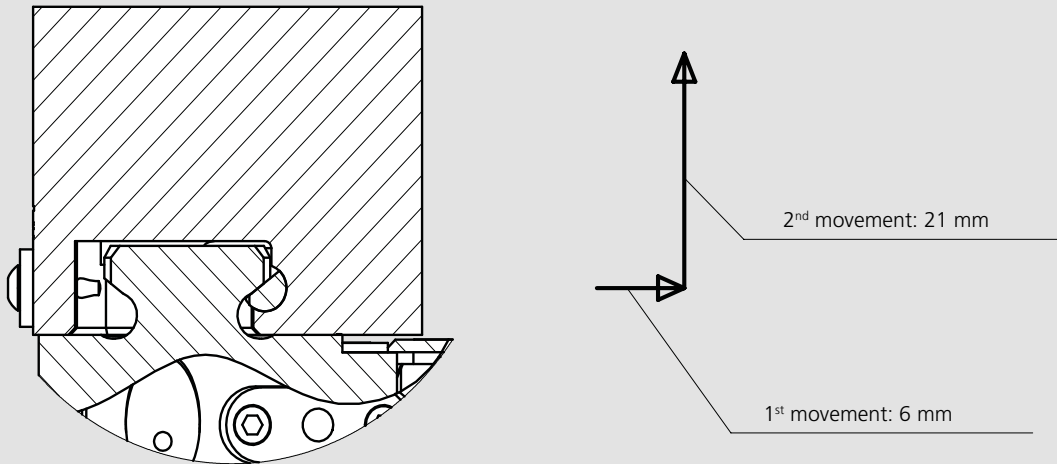


Subject to technical changes

Type	Id. No.*	O.D. Clamping		I.D. Clamping	
		max/min	Clamping range	max/min	Clamping range
160 PT-RR	90711793	92/84	0-130	21,5/13,5	60/215
160 PT-RR	90721793	92/84	0-120	21,5/13,5	70/215
200 PT-RR	90712193	113/103	0-160	24,5/14,5	65/260
200 PT-RR	90722193	113/103	0-150	24,5/14,5	75/260
250 PT-RR	90712643	135/120	0-190	34/19	90/320
250 PT-RR	90722643	135/120	0-180	34/19	100/320

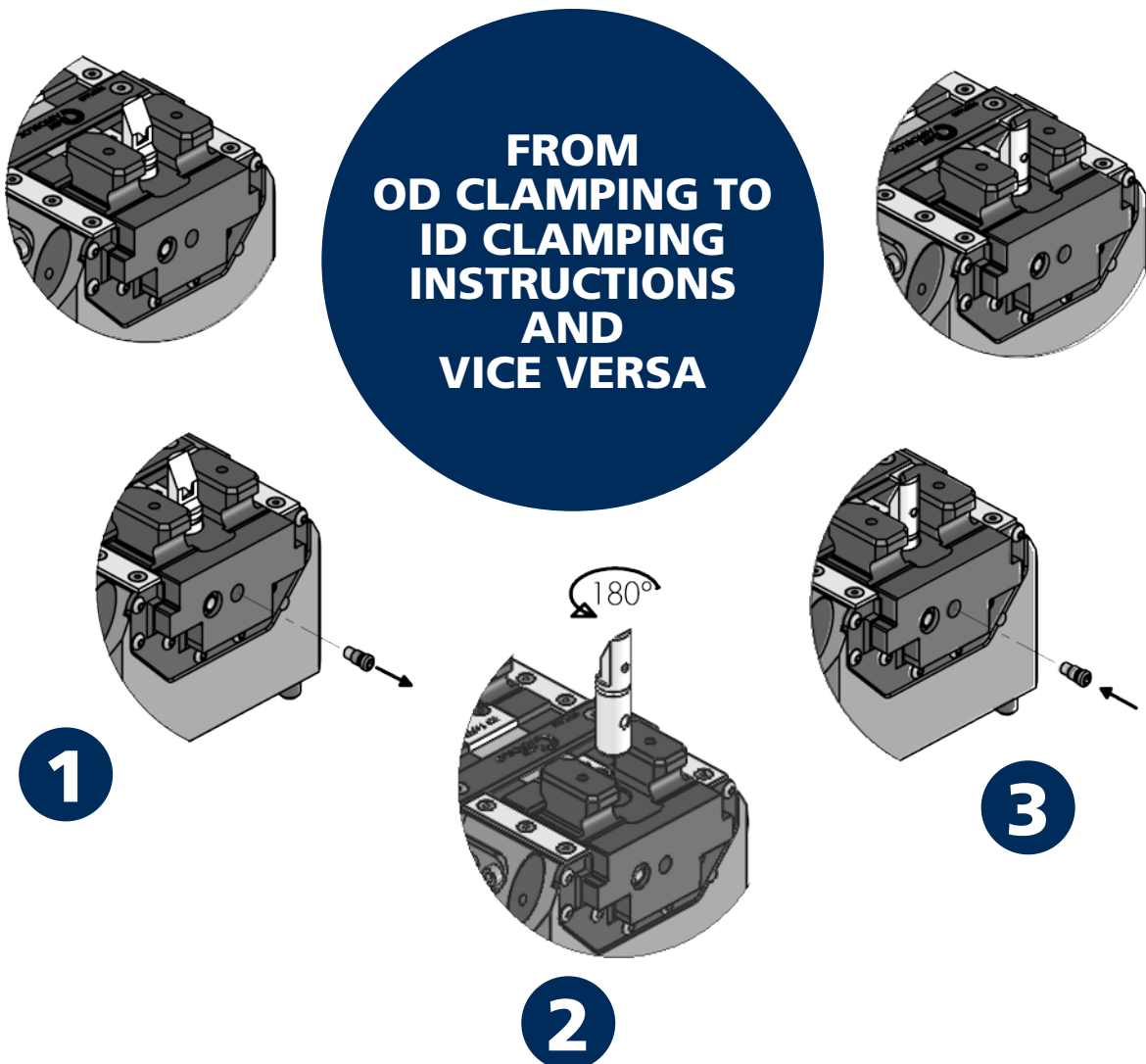
*The Id.no. refers to one single piece

UNLOCK JAW STEP



O.D. CLAMPING

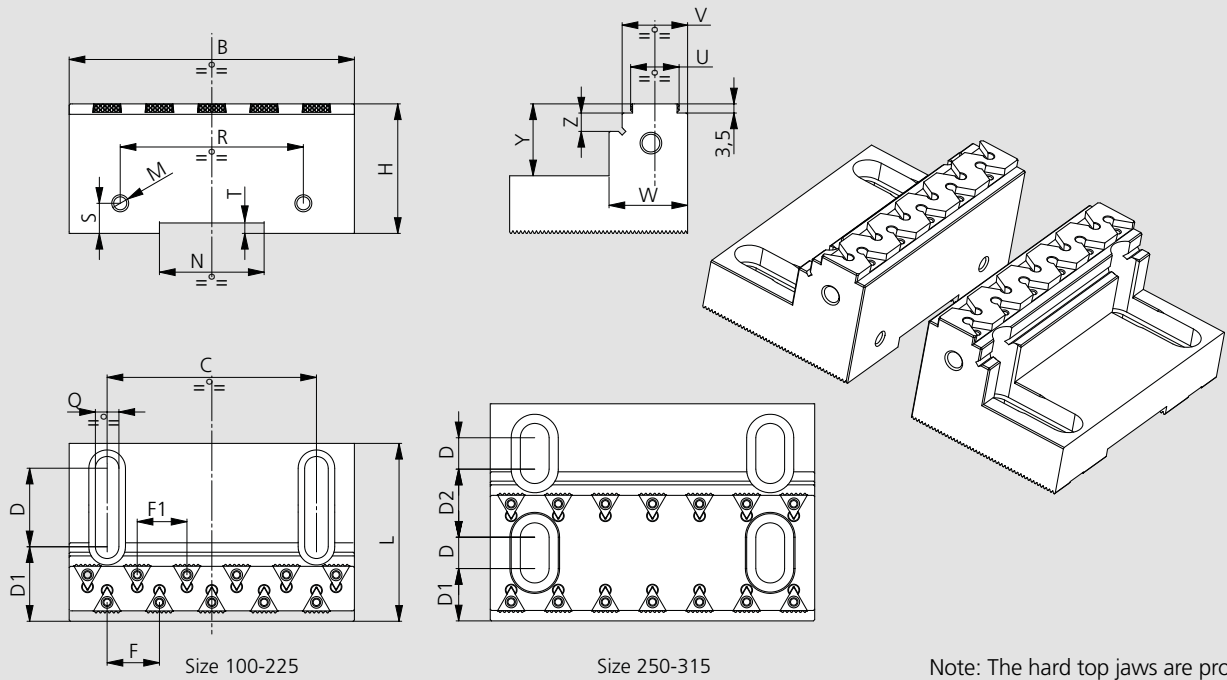
I.D. CLAMPING



WIDE HARD TOP JAWS

TOP JAWS SinterGrip

- Hard top jaws with SinterGrip inserts
- Metric serrated 1.5 mm x 60°



Subject to technical changes.

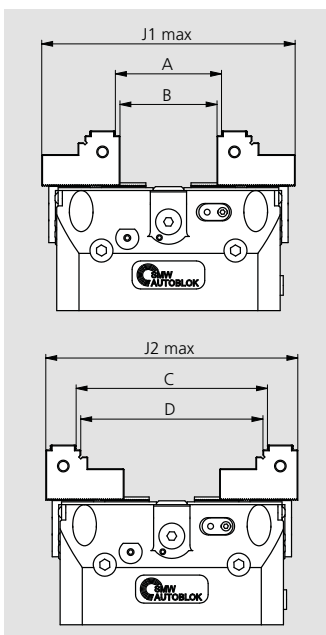
Note: The hard top jaws are provided with Id. No. 58450129 inserts mounted only on one side.

WIDE HARD TOP JAWS DIMENSIONS

Type	Id. No. set of 2 top jaws	B [mm]	C [mm]	D [mm]	D1 [mm]	D2 [mm]	F [mm]	F1 [mm]	H [mm]	L [mm]	M [mm]	N [mm]	Q [mm]	R [mm]	S [mm]	T [mm]	U [mm]	V [mm]	W [mm]	Y [mm]	Z [mm]	No. inserts provided	*No. seat inserts	Weight [kg]
100-125 TV-STV-PT	58454115	72	35	21	9	/	12/23	12/23	26	39	M5	20H8	6,6	60	10	3,5	21,5	28	33	13	5	8	16	0,7
160-180 TV-STV-PT	58454125	104	60	30	14	/	15/28	15/28	34,5	57	M6	32H8	9	86	11,5	3,5	21,5	28	33	15,5	5	10	20	2
200-225 TV-STV-PT	58454135	109	80	30	29	/	20	19	34,5	68	M6	40H8	9	70	11,5	4	18,5	25	30	15,5	7	12	22	2,3
250 TV-PT	58454145	124	90	12	20	26	18	18	39,5	83	M8	50H8	11	80	15	4	45,5	52	57	17,5	7	14	28	4,3
315 TV	58454155	160	120	15	23,5	35	20	20	44,5	105	M8	60H8	13	80	15	4	55,5	62	67	17,5	7	16	32	8,3

*The number of seats inserts indicated refers to set of 2 top jaws

WIDE HARD TOP JAWS CLAMPING RANGES for long and normal stroke Twin Vise models

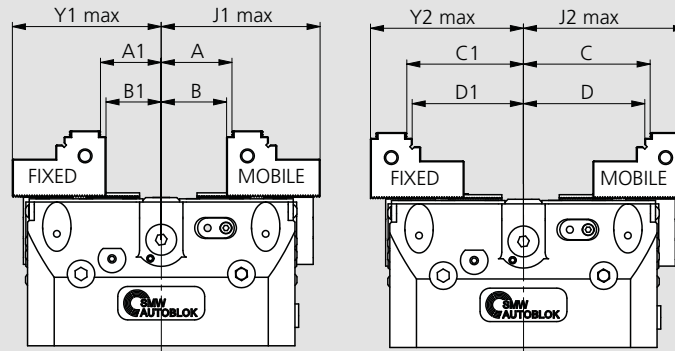


Id. No. set of 2 top jaws	Type	A [mm]	B [mm]	J1 max. [mm]	C [mm]	D [mm]	J2 max. [mm]	Gripping force max. [kN]**										
58454115	100 TV-N	10 - 32	4 - 25	106	32 - 70	25 - 63	122	13										
	100 TV-L																	
	100 PT-N																	
	100 PT-L	10 - 46	4 - 40						120	32 - 83	25 - 76	135	13					
	125 PT-N																	
	125 PT-L																	
	125 STV-N																	
125 STV-L	10 - 60	4 - 53	134	32 - 98	25 - 91	150	22											
125 TV-N																		
125 TV-L																		
58454125	160 TV-N	10 - 70						4 - 63	180	66 - 138	59 - 131	190	40					
	160 TV-L																	
	160 PT-N	10 - 70						4 - 63						180	66 - 138	59 - 131	190	40
	160 PT-L																	
	180 STV-N																	
	180 STV-L																	
58454135	200 TV-N	10 - 93 (***)	4 - 86	225	96 - 175	89 - 168	220	60										
	200 TV-L																	
	200 PT-N	10 - 93 (***)	4 - 86						225	96 - 175	89 - 168	220	60					
	200 PT-L																	
	225 STV-N																	
	225 STV-L																	
58454145	250 TV-N	10 - 88	4 - 82	250	88 - 192	82 - 186	292	60										
	250 TV-L																	
	250 PT-N	10 - 106	4 - 100						270	88 - 202	82 - 196	302	60					
	250 PT-L																	
58454155	315 TV-N	18 - 108	12 - 102	315	104 - 246	98 - 240	366	100										
	315 TV-L																	

** the maximum gripping force values are indicative since they depend on the number of inserts used.

***with 200 TV-PN and 200 PT-N models it is not possible to clamp workpieces with dimensions between from 93 to 96 mm.

- Hard top jaws with SinterGrip inserts
- Metric serrated 1.5 mm x 60°



Note: the A1 - B1 - C1 - D1 dimensions for fixed jaws clamping range have tolerance ± 0.75 mm due to the serration pitch 1.5 mm.

Subject to technical changes.

WIDE HARD TOP JAWS CLAMPING RANGES for one fixed jaw Twin Vise models

Id. No. set of 2 top jaws	Type	A [mm]	B [mm]	A1 [mm]	B1 [mm]	J1 max. [mm]	Y1 max. [mm]	C [mm]	D [mm]	C1 [mm]	D1 [mm]	J2 max. [mm]	Y2 max. [mm]	Gripping force max. [kN]**
58454115	100 TV-F	5 - 16	2 - 13	5 - 16	2 - 13	53	52	16 - 35	13 - 32	16 - 35	13 - 32	61	60	13
	100 PT-F	5 - 23	2 - 20	5 - 23	2 - 20	60	59	16 - 41	13 - 38	16 - 41	13 - 38	67	66	13
	125 PT-F	5 - 30	2 - 27	5 - 30	2 - 27	67	66	16 - 49	13 - 46	16 - 49	13 - 46	75	74	15
58454125	160 TV-F	5 - 35	2 - 32	5 - 35	2 - 32	90	89	33 - 69	30 - 66	33 - 69	30 - 66	95	93	32
	160 PT-F	5 - 35	2 - 32	5 - 35	2 - 32	90	89	33 - 69	30 - 66	33 - 69	30 - 66	95	93	32
58454135	200 TV-F	5 - 48	2 - 45	5 - 48	2 - 45	114	113	48 - 87	45 - 84	48 - 87	45 - 84	110	109	44
	200 PT-F	5 - 48	2 - 45	5 - 48	2 - 45	114	113	48 - 87	45 - 84	48 - 87	45 - 84	110	109	44
58454145	250 TV-F	5 - 53	2 - 50	5 - 53	2 - 50	135	134	44 - 101	41 - 98	44 - 88	41 - 85	151	137	40
58454155	315 TV-F	9 - 66	6 - 63	9 - 66	6 - 63	169	168	60 - 127	57 - 124	60 - 112	57 - 109	187	171	65

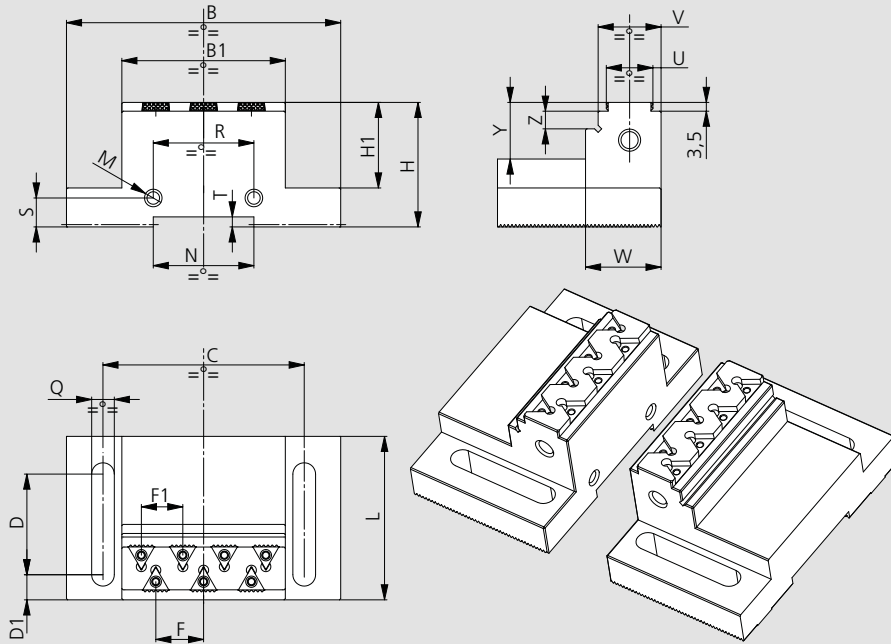
** the maximum gripping force values are indicative since they depend on the number of inserts used.



NARROW HARD TOP JAWS

TOP JAWS SinterGrip

- Hard top jaws with SinterGrip inserts
- Metric serrated 1.5 mm x 60°



Subject to technical changes.

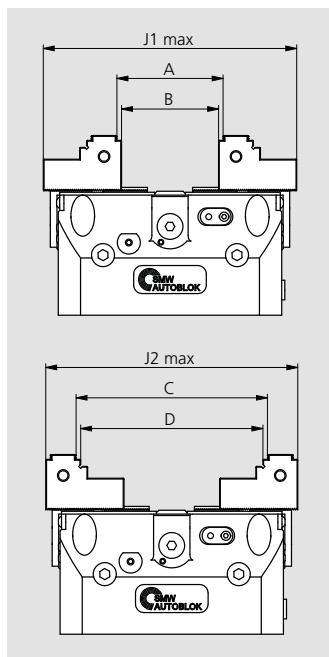
Note: the hard top jaws are provided with Id. No. 58450129 inserts mounted only on one side.

NARROW HARD TOP JAWS DIMENSIONS

Type	Id. No. set of 2 top jaws	B [mm]	B1 [mm]	C [mm]	D [mm]	D1 [mm]	F [mm]	F1 [mm]	H [mm]	H1 [mm]	L [mm]	M [mm]	N [mm]	Q [mm]	R [mm]	S [mm]	T [mm]	U [mm]	V [mm]	W [mm]	Y [mm]	Z [mm]	No. inserts provided	*No. seat inserts	Weight [Kg]
100-125 TV-STV-PT	58454215	54.5	24	35	27	6	12	12	29.5	20	39	-	20H8	6.6	-	-	3.5	21.5	28	33	17.5	7	4	8	0.4 kg
160-180 TV-STV-PT	58454225	79	45	60	38	9	20	15.5	39.5	26	56	M6	32H8	9	26	11.5	3.5	18.5	25	30	17.5	7	6	10	1.3 kg
200-225 TV-STV-PT	58454235	109	65	80	40	10	19	16.5	44.5	27.5	65	M6	40H8	9	40	11.5	4	18.5	25	30	18.5	7	8	14	2.5 kg
250 TV-PT	58454245	124	72	90	48	14	14	14	49.5	34	76	M6	50H8	11	40	11.5	4	21.5	28	33	20.5	7	10	20	3.5 kg
315 TV	58454255	160	90	120	60	15	15	15	49.5	32	90	M6	60H8	13	60	15	4	27.5	34	39	19.5	7	12	24	5.5 kg

*The number of seats inserts indicated refers to set of 2 top jaws

NARROW HARD TOP JAWS CLAMPING RANGES for long and normal stroke Twin Vise models



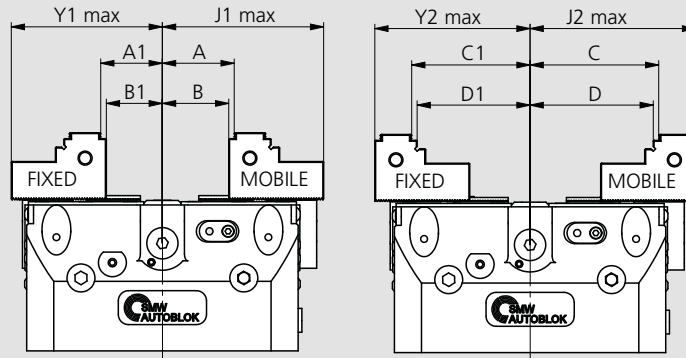
Id. No. set of 2 top jaws	Type	A [mm]	B [mm]	J1 max. [mm]	C [mm]	D [mm]	J2 max. [mm]	Gripping force max. [kN]**
58454215	100 TV-N	10-32	4-25	106	32-75	25-68	127	13
	100 TV-L							
	100 PT-N	10-46	4-40	120	32-85	25-78	137	13
	100 PT-L							
	125 PT-N	10-60	4-53	134	32-100	25-93	152	22
	125 PT-L							
	125 STV-N	10-60	4-53	134	32-100	25-93	152	26
125 STV-L								
58454225	160 TV-N	10-74	4-67	182	74-140	67-133	188	40
	160 TV-L							
	160 PT-N	10-74	4-67	182	74-140	67-133	188	40
	160 PT-L							
	180 STV-N	10-88	4-82	196	74-160	67-153	208	54
180 STV-L	10-98	4-92	206					
58454235	200 TV-N	10-93	4-87	220	93-175	87-168	220	60
	200 TV-L							
	200 PT-N	10-93	4-87	220	93-175	87-168	220	60
	200 PT-L							
	225 STV-N	10-110	4-104	237	93-202	87-196	250	66
	225 STV-L	10-120	4-114	247				
58454245	250 TV-N	22-108	16-102	255	108-218	102-212	272	60
	250 TV-L	22-122	16-116	270				
	250 PT-N	22-108	16-102	255	108-218	102-212	272	60
	250 PT-L	22-122	16-116	270				
58454255	315 TV-N	30-138	23-132	315	138-275	132-268	340	100
	315 TV-L	30-162	23-156	338	160-275	154-268	340	

**the maximum gripping force values are indicative since they depend on the number of inserts used.

NARROW HARD TOP JAWS

- Hard top jaws with SinterGrip inserts
- Metric serrated 1.5 mm x 60°

TOP JAWS SinterGrip



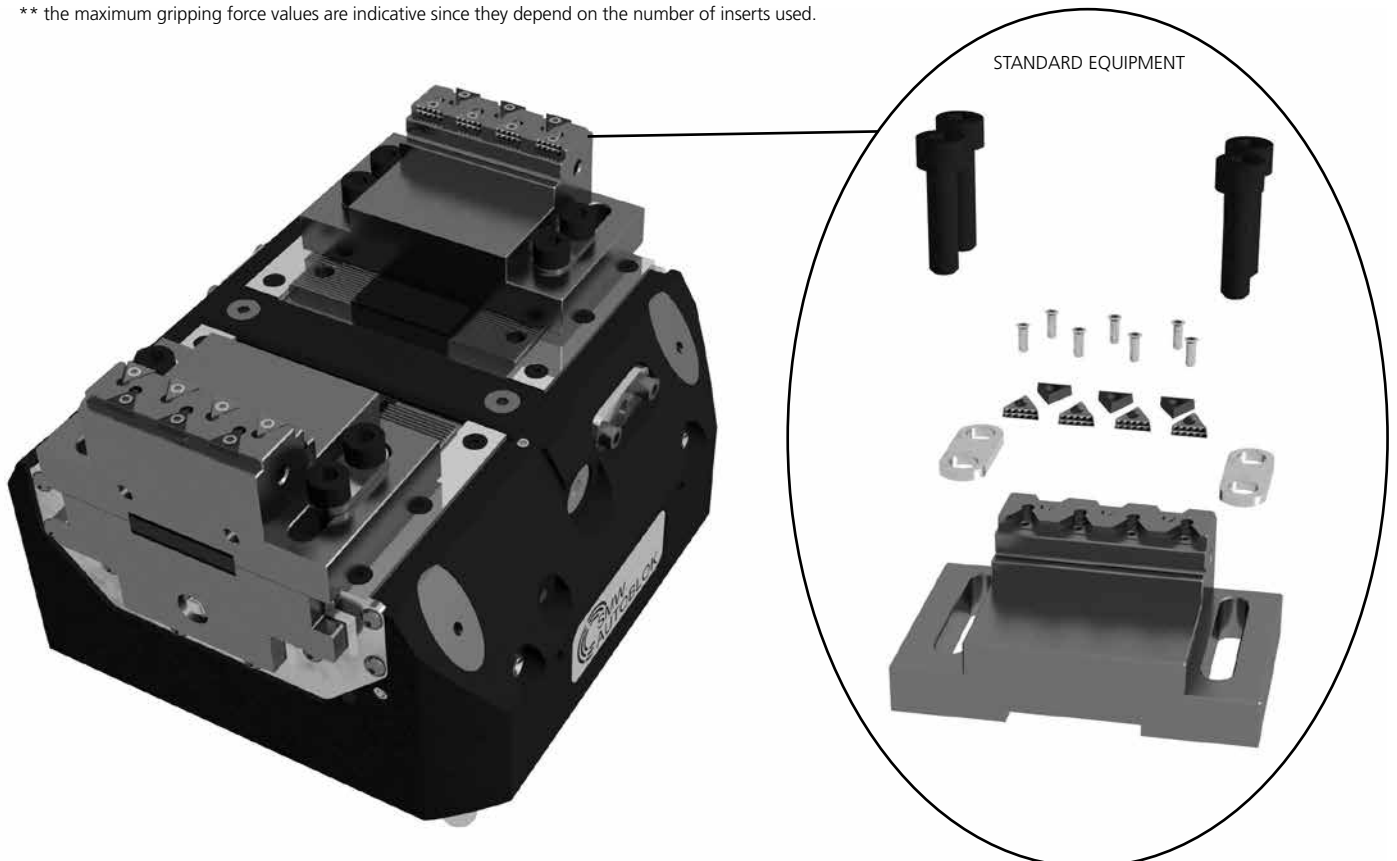
Note: the A1 - B1 - C1 - D1 dimensions for fixed jaws clamping range have tolerance ± 0.75 mm due to the serration pitch 1.5 mm

Subject to technical changes.

NARROW HARD TOP JAWS CLAMPING RANGES for fixed jaw Twin Vise models

Id. No. set of 2 top jaws	Type	A [mm]	B [mm]	A1 [mm]	B1 [mm]	J1 max. [mm]	Y1 max. [mm]	C [mm]	D [mm]	C1 [mm]	D1 [mm]	J2 max. [mm]	Y2 max. [mm]	Gripping force max. [kN]**
58454215	100 TV-F	5 - 16	2 - 13	5 - 16	2 - 13	53	52	16 - 38	13 - 34	16 - 38	13 - 34	64	63	13
	100 PT-F	5 - 23	2 - 20	5 - 23	2 - 20	60	59	16 - 43	13 - 40	16 - 43	13 - 40	69	68	13
	125 PT-F	5 - 30	2 - 27	5 - 30	2 - 27	67	66	16 - 50	13 - 47	16 - 50	13 - 47	76	75	15
58454225	160 TV-F	5 - 37	2 - 34	5 - 37	2 - 34	91	90	37 - 70	34 - 67	37 - 70	34 - 67	94	92	32
	160 PT-F	5 - 37	2 - 34	5 - 37	2 - 34	91	90	37 - 70	34 - 67	37 - 70	34 - 67	94	92	32
58454235	200 TV-F	5 - 47	2 - 44	5 - 47	2 - 44	110	109	47 - 87	44 - 84	47 - 87	44 - 84	110	109	44
	200 PT-F	5 - 47	2 - 44	5 - 47	2 - 44	110	109	47 - 87	44 - 84	47 - 87	44 - 84	110	109	44
58454245	250 TV-F	11 - 61	8 - 58	11 - 61	8 - 58	135	134	54 - 109	51 - 106	54 - 109	51 - 106	136	134	40
58454255	315 TV-F	15 - 81	12 - 78	15 - 81	12 - 78	169	168	80 - 137	77 - 134	80 - 137	77 - 134	170	168	65

** the maximum gripping force values are indicative since they depend on the number of inserts used.

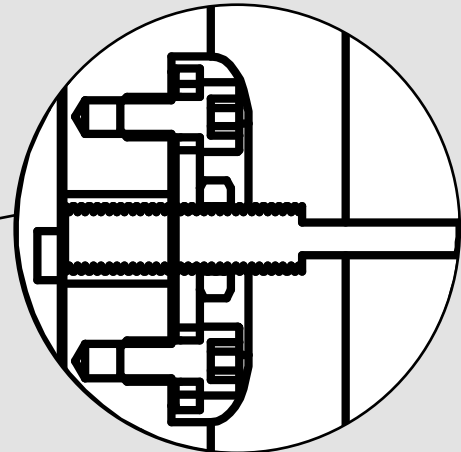
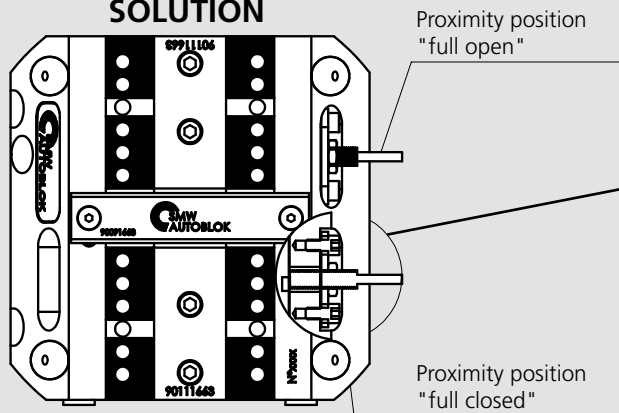


Stroke control proximities

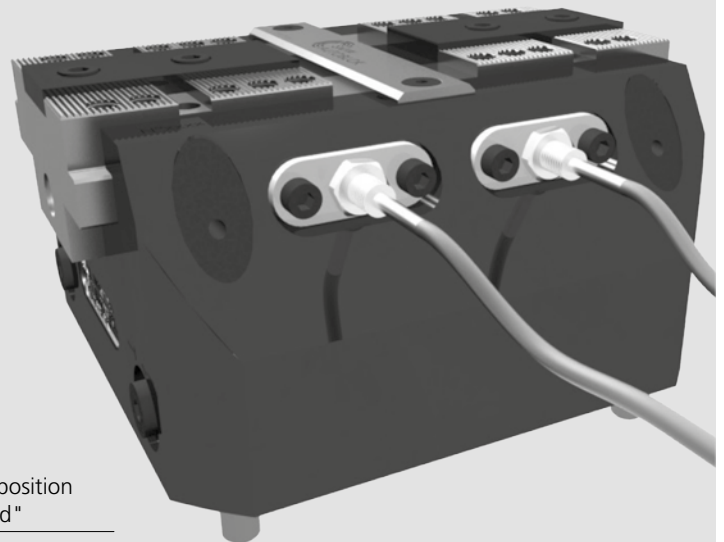
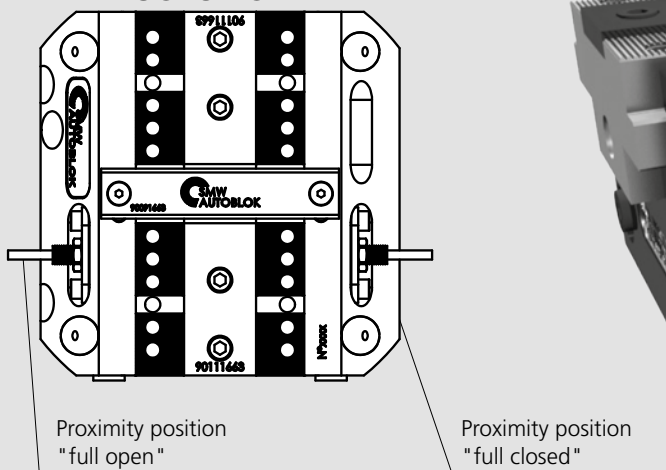
(OPTIONAL)

■ Pneumatic jaw stroke control valve

2 SLIDING JAWS SOLUTION



1 FIXED JAW SOLUTION



Twin Vise Type	Thread	Balluff sensor*	Omron sensor (alternative)	Telemecanique sensor (alternative)	S	L
100 TV	M5x0.5	BES516-3005-G-E4-C-PU02	E2EX1-B1	XS1N05PA310	0.5	20
160-200-250 TV	M8x1	BES516-324-G-E4-C-PU02	E2AS08KS02-WP-B12M	XS508B1PAL2	1	30
315 TV	M8x1	BESE08EF-PSC20B-BP02	E2AS08LS02-WP-B12M	XS508BLPAL2	1	40
125 STV-2	M5x0.5	BES516-3005-G-E4-C-PU02	E2EX1-B1	XS1N05PA310	0.5	20
180-225 STV-2	M8x1	BES516-324-G-E4-C-PU02	E2AS08KS02-WP-B12M	XS508B1PAL2	1	30
100-125 PT	M5x0.5	BES516-3005-G-E4-C-PU02	E2EX1-B1	XS1N05PA310	0.5	20
160-200-250 PT	M8x1	BES516-324-G-E4-C-PU02	E2AS08KS02-WP-B12M	XS508B1PAL2	1	30

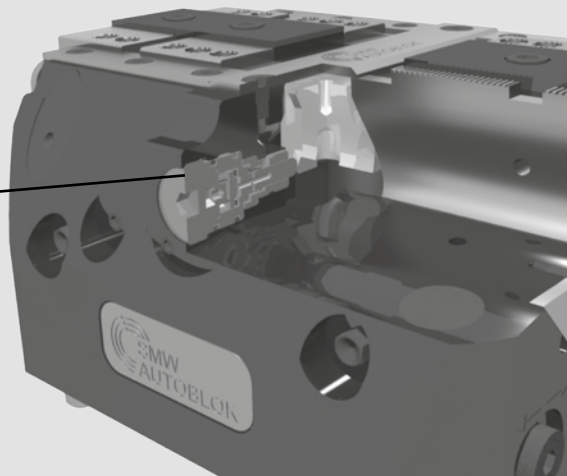
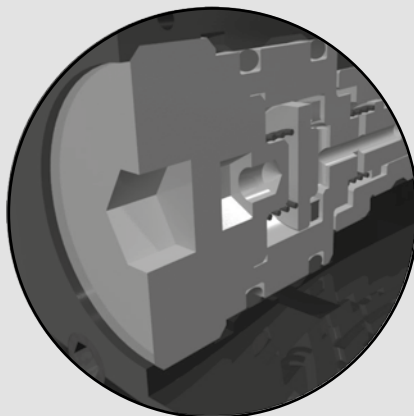
* Recommended by SMW-AUTOBLOK

Pneumatic valve

■ Pneumatic jaw stroke control valve

(OPTIONAL)

Available for
STV-2 STV-3
PTP PTH



Twin Vise type	Id. No.
125 STV-2	90902283
180 STV-2	90902283
225 STV-2	90902283
180 STV-3	97901801
225 STV-3	97902204
100 PTP PTH	90901163
125 PTP PTH	90901763
160 PTP PTH	90901763
200 PTP PTH	90901763
250 PTH	90901763

The pneumatic open / close stroke control valve signals the locking jaws end-of-stroke positions, both in fully opened and fully closed positions.

The valve needs a pneumatic line with **filtered and lubricated air and a pressure of 0,5-1 bar.**

- when the locking jaws are in one of the end stroke position (fully opened or closed), the valve is open causing a pressure drop in the pneumatic line or the beginning of an air flow.
- when the locking jaws are in the working stroke, the valve is closed and there is no pressure drop in the pneumatic line and there no air flow.

ONLY THE PTP AND PTH VISES

The vises can be supplied (when requested) with the **opposite functioning** of the valve: that is closed valve at the end of the strokes and open in the working / middle stroke.

Safety valve SAB-1

(OPTIONAL)

Pneumatic gun

with steel nozzle



The Safety valve SAB-1 maintains air pressure in the cylinder pallet transportation / storage or machining without feed.

APPLICATION EXAMPLES

