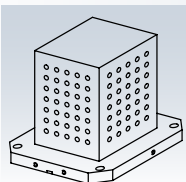


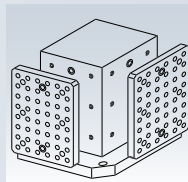
Portapezzi Modulari

1



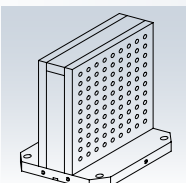
CUBI

Pag. 1.4



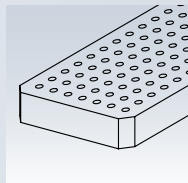
PIASTRE

Pag. 1.28



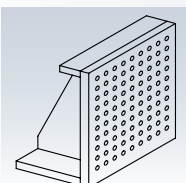
SPALLE

Pag. 1.19



SOVRATAVOLE

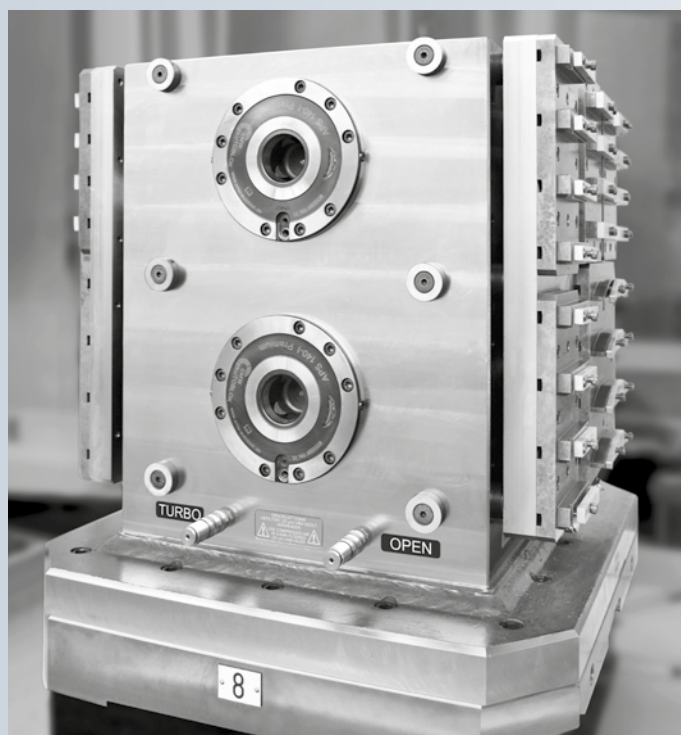
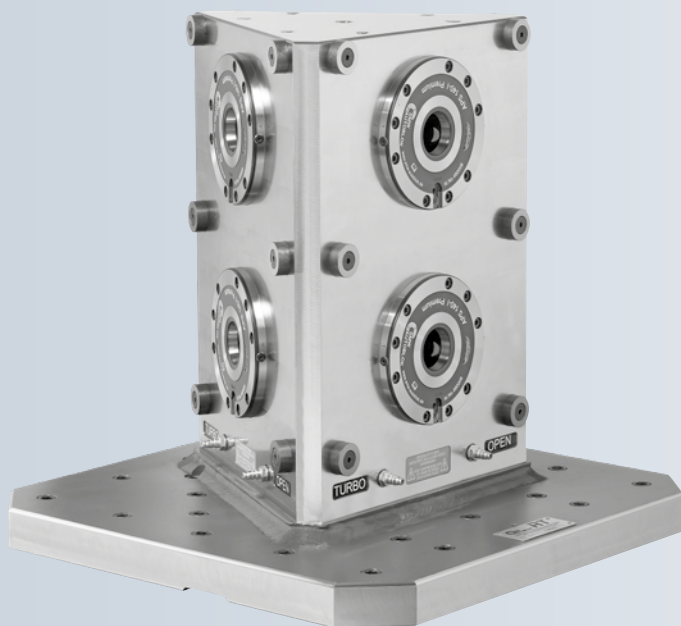
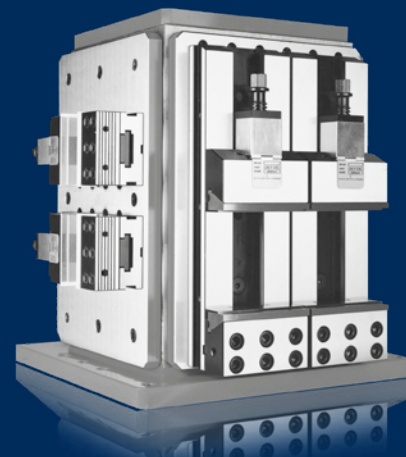
Pag. 1.30



SQUADRE

Pag. 1.24

Portapezzi Modulari



I portapezzi modulari sono...

La lavorazione dei cubi in ACCIAIO o in ALLUMINIO viene eseguita su macchine a controllo numerico di elevata precisione che garantiscono la ripetibilità dimensionale.

Il controllo di qualità (verifica dimensionale) è eseguito con una macchina di controllo tridimensionale.

ACCIAIO

La versione in acciaio dei portapezzi prevede l'impiego di materiali ad alta resistenza (50/55,5 Kg.mm²).

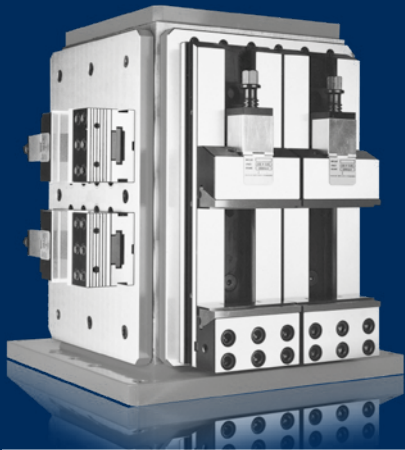
Dopo la saldatura i portapezzi sono sabbiati e sottoposti a trattamento termico di normalizzazione (800 gradi) per annullare le tensioni interne. Eseguita la lavorazione i portapezzi sono verniciati ed asciugati a forno a 60 gradi.

ALLUMINIO

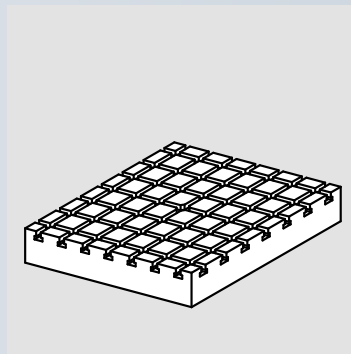
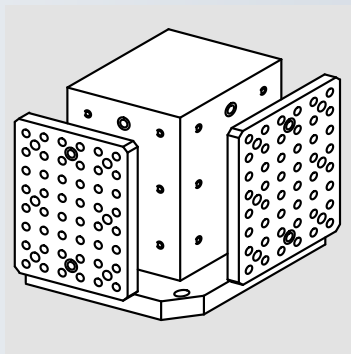
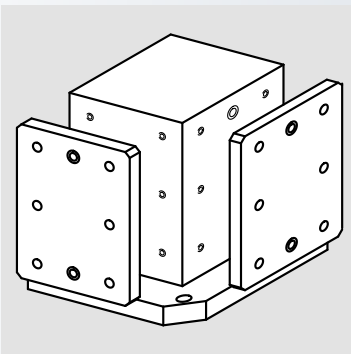
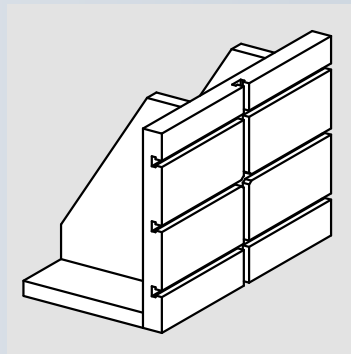
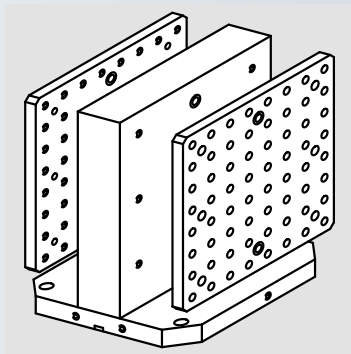
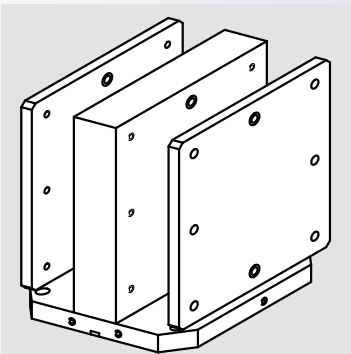
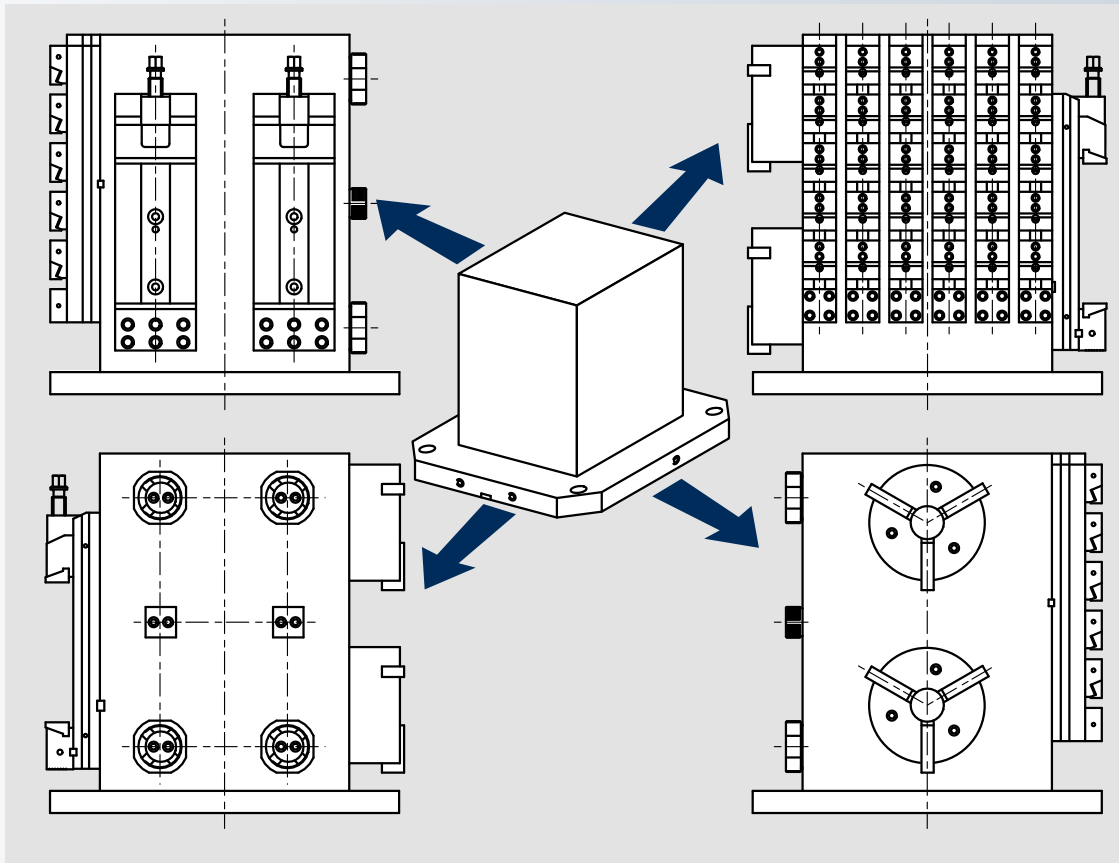
La versione in lega di Alluminio per getti dei portapezzi, prevede l'utilizzo di materiali di ultima generazione (AlCu4TiMGka) ad alta resistenza (HB 90 - 115). Dopo la lavorazione i portapezzi sono sottoposti a trattamento di anodizzazione (come previsto dalla normativa EN 12373/1 ex UNI 4522-66) al fine di evitare l'usura delle superfici.

GHISA

Tipo UNI EN 1561 GJL normalizzata a 500/550° C
Alta resistenza HB 180-220



I vantaggi della modularità

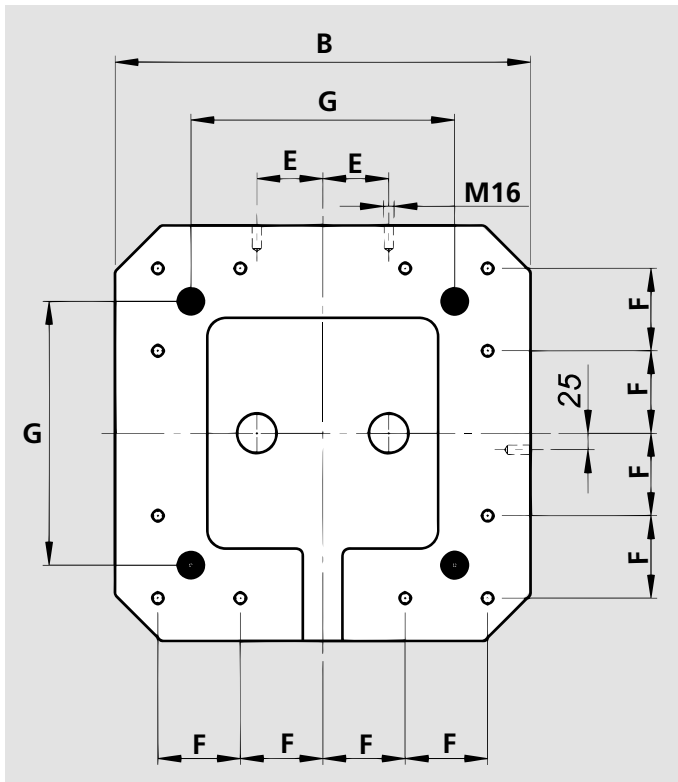


Portapezzi Modulari

Cubi

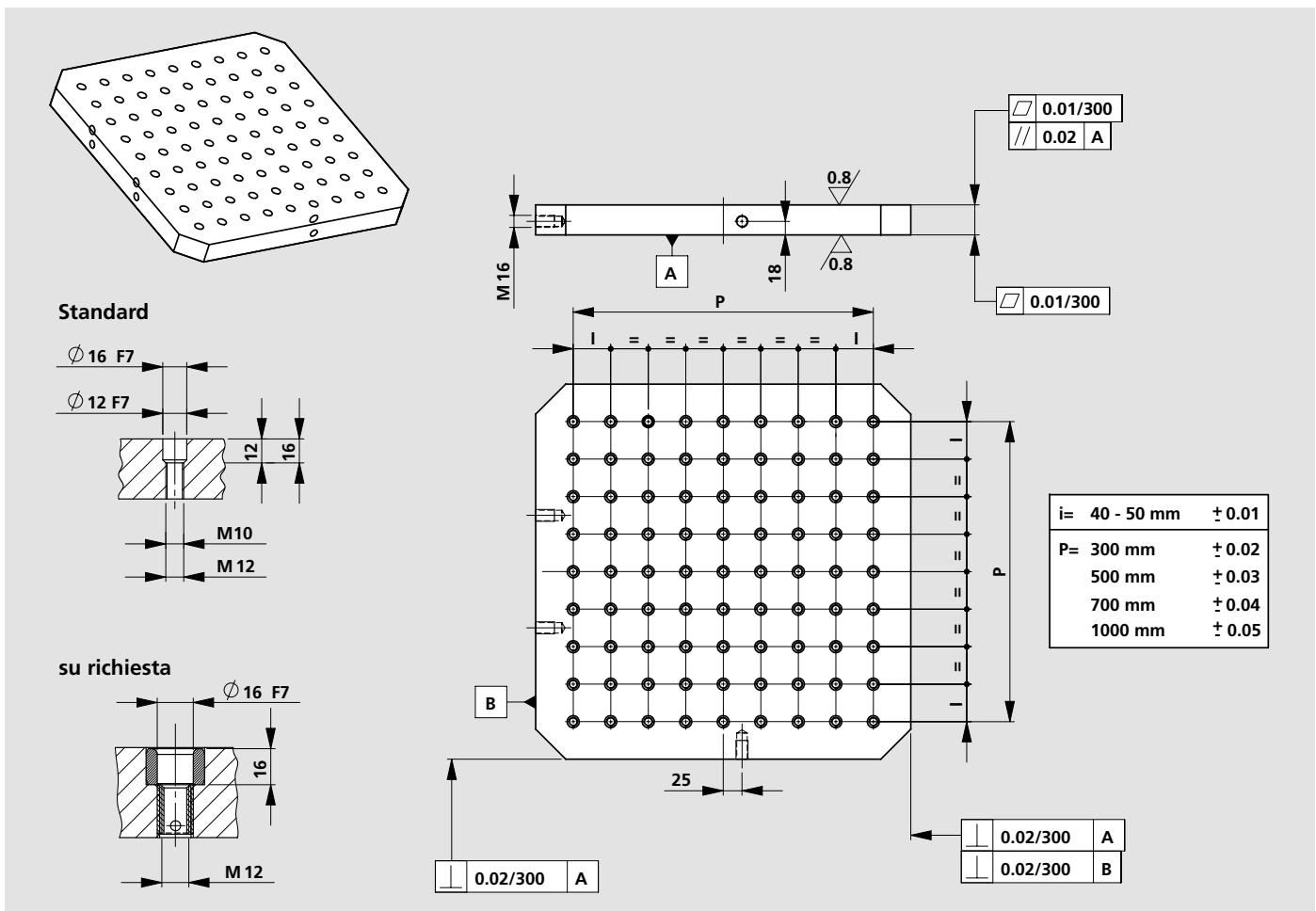
■ Interfacciamento tavole m.u.

I nostri prodotti (cubi, spalle) vengono forniti standard con la base predisposta per l'interfacciamento alla tavola della macchina utensile secondo le specifiche qui sotto riportate:

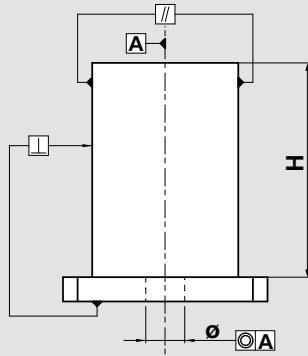


B mm	E mm	F mm	G mm
300	a richiesta	a richiesta	a richiesta
400	55	80	250
500	75	100	250
630	100	125	420
800	135	160	420

Tolleranze costruttive

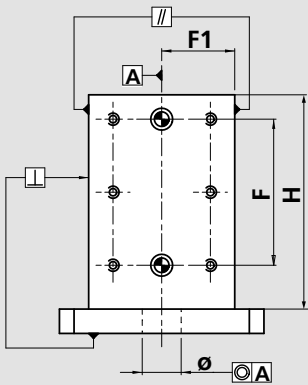


Portapezzi fresati finiti



H	⊥	//	⊙
500 mm	0.020	0.020	0.020
1000 mm	0.035	0.035	0.035

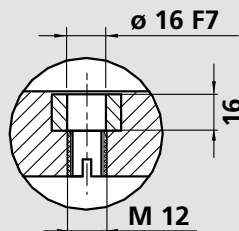
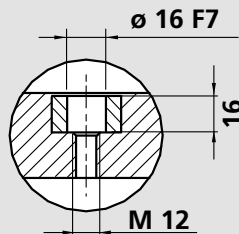
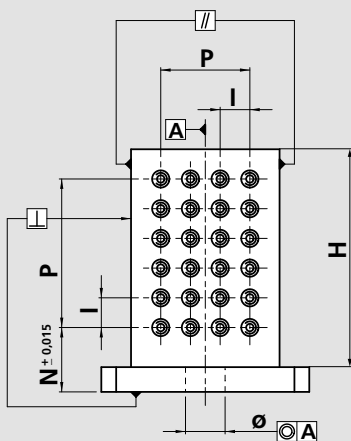
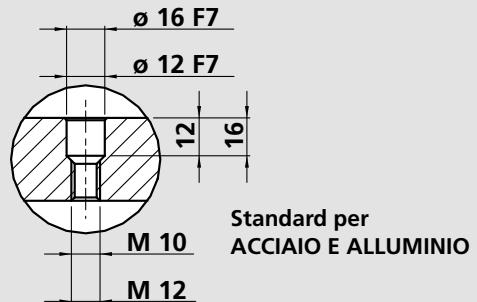
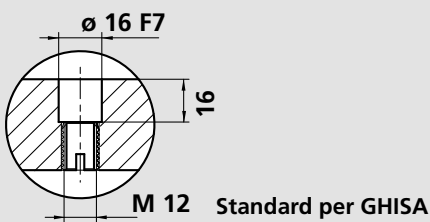
Portapezzi per piastre riportate



H	⊥	//	⊙
500 mm	0.020	0.020	0.020
1000 mm	0.035	0.035	0.035

F=	300 mm	± 0.02
	500 mm	± 0.03
	700 mm	± 0.04
F1=	500 mm	± 0.015
	1000 mm	± 0.025

Portapezzi a reticolo



H	⊥	//	⊙
500 mm	0.020	0.020	0.020
1000 mm	0.035	0.035	0.035

Speciale su richiesta solo per ALLUMINIO

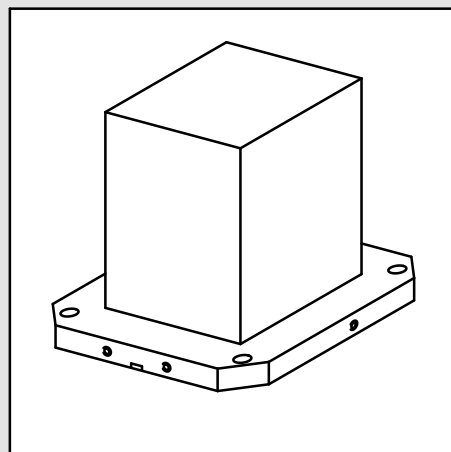
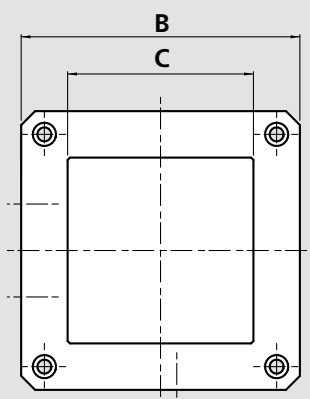
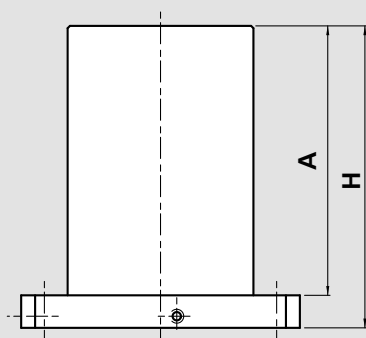
i=	40 - 50 mm	± 0.01
P=	300 mm	± 0.02
	500 mm	± 0.03
	700 mm	± 0.04
	1000 mm	± 0.05

Speciale su richiesta solo per GHISA

Portapezzi Modulari

Cubi fresati

- Acciaio, alluminio o ghisa
- Sgrossati o finiti



ACCIAIO

Sgrossati Cod.	Finiti Cod.	A mm	B mm	C mm	H mm	Peso kg
57006006	57006005	415	300	160	455	81
57006036	57006035	620	400	250	660	205
57006056	57006055	660	500	350	700	318
57006091	57006090	815	630	450	860	524
57006121	57006120	945	800	550	1000	795

ALLUMINIO

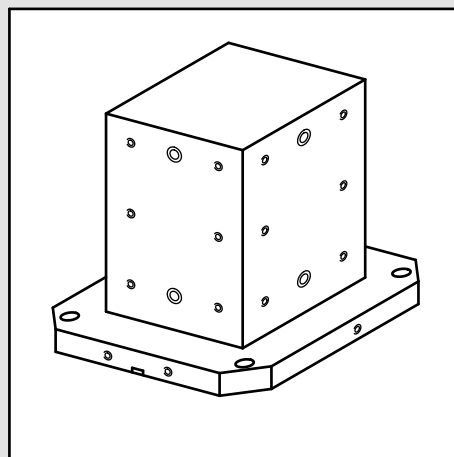
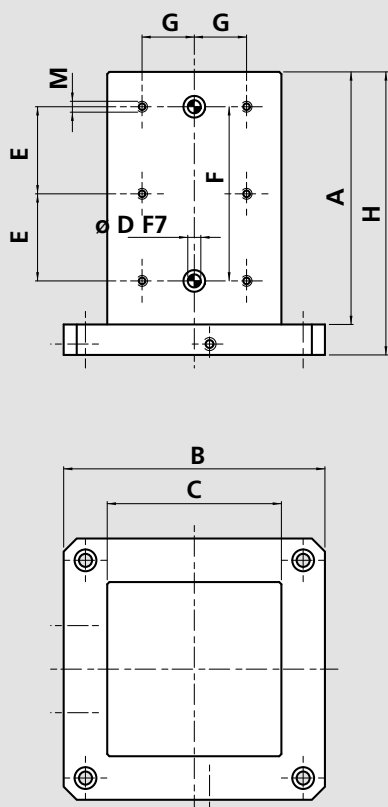
Cod.	A mm	B mm	C mm	H mm	Peso kg
57306035	620	400	250	660	80
57306055	660	500	350	700	137
57306090	815	630	450	860	253

GHISA

Sgrossati Cod.	Finiti Cod.	A mm	B mm	C mm	H mm	Peso kg
57406036	57406035	615	400	250	660	208
57406056	57406055	655	500	350	700	329
57406091	57406090	810	630	450	860	607
57406121	57406120	945	800	550	1000	808

Esecuzioni speciali a richiesta

- Acciaio, alluminio o ghisa
- Con fori griglia per piastre



ACCIAIO

Cod.	A mm	B mm	C mm	H mm	Ø D mm	M	E mm	F mm	G mm	Peso kg
57020015	415	300	160	455	12	M 10	150	300	40	81
57020045	620	400	250	660	16	M 12	250	500	75	205
57020065	660	500	350	700	16	M 12	250	500	125	318
57020100	815	630	450	860	16	M 12	350	700	175	524
57020130	945	800	550	1000	16	M 12	400	800	225	795

ALLUMINIO

Cod.	A mm	B mm	C mm	H mm	Ø D mm	M	E mm	F mm	G mm	Peso kg
57312045	620	400	250	660	16	M 12	250	500	75	80
57312065	660	500	350	700	16	M 12	250	500	125	137
57312100	815	630	450	860	16	M 12	350	700	175	253

GHISA

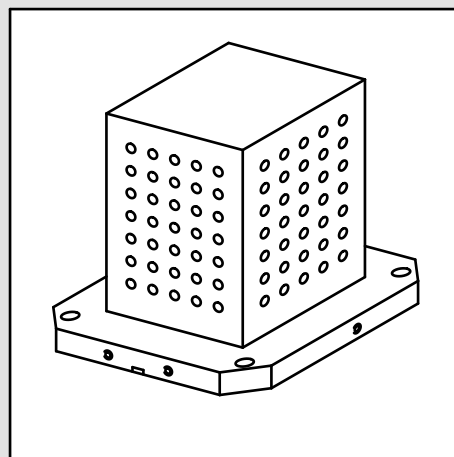
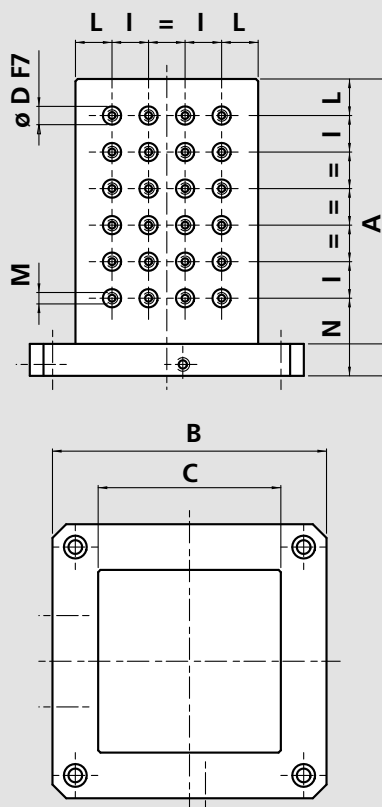
Cod.	A mm	B mm	C mm	H mm	Ø D mm	M	E mm	F mm	G mm	Peso kg
57412045	615	400	250	660	16	M 12	250	500	75	208
57412065	655	500	350	700	16	M 12	250	500	125	329
57412100	810	630	450	860	16	M 12	350	700	175	607
57412130	945	800	550	1000	16	M 12	400	800	225	808

Esecuzioni speciali a richiesta

Portapezzi Modulari

Cubi a reticolo

- Acciaio, alluminio o ghisa
- Con fori griglia per piastre



ACCIAIO

Cod.	A mm	B mm	C mm	H mm	Ø D mm	M	I mm	L mm	N mm	Peso kg
57030015	415	300	160	455	12	M 10	40	40	95	79
57030045	620	400	250	660	16	M 12	50	50	110	198
57030065	660	500	350	700	16	M 12	50	50	100	307
57030100	815	630	450	860	16	M 12	50	50	110	506
57030130	945	800	550	1000	16	M 12	50	50	100	768

ALLUMINIO

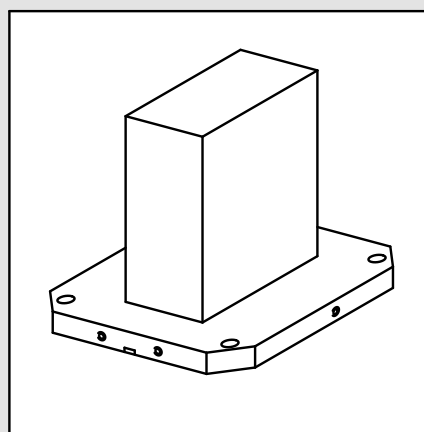
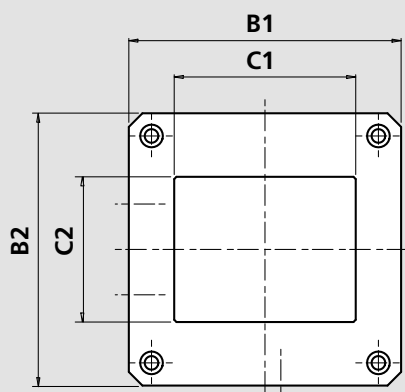
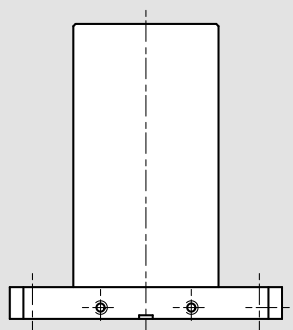
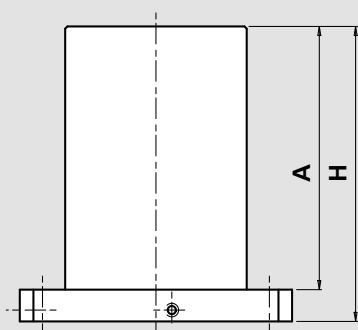
Cod.	A mm	B mm	C mm	H mm	Ø D mm	M	I mm	L mm	N mm	Peso kg
57313045	620	400	250	660	16	M 12	50	50	110	78
57313065	660	500	350	700	16	M 12	50	50	100	133
57313100	815	630	450	860	16	M 12	50	50	110	246

GHISA

Cod.	A mm	B mm	C mm	H mm	Ø D mm	M	I mm	L mm	N mm	Peso kg
57413045	615	400	250	660	16	M 12	50	50	110	208
57413065	655	500	350	700	16	M 12	50	50	100	329
57413100	810	630	450	860	16	M 12	50	50	110	522
57413130	945	800	550	1000	16	M 12	50	50	100	808

Esecuzioni speciali a richiesta

■ Acciaio



ACCIAIO

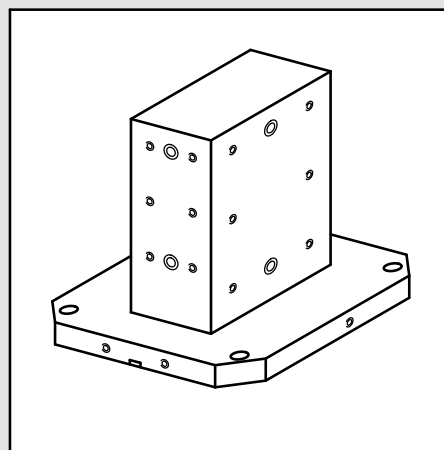
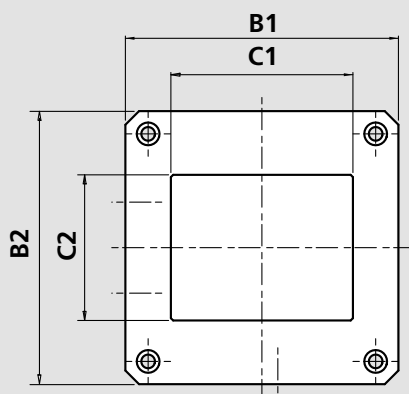
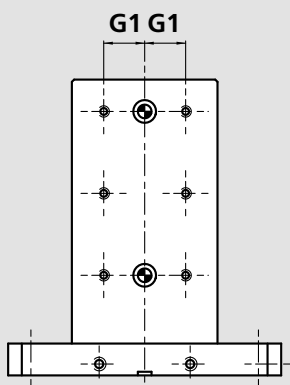
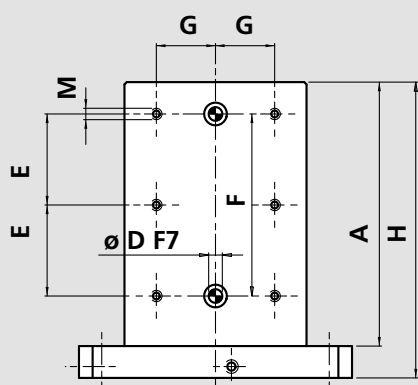
Cod.	A mm	B1 mm	B2 mm	C1 mm	C2 mm	H mm	Peso kg
57007005	615	500	400	350	250	655	250
57007010	615	500	500	350	250	655	265
57007025	615	630	500	450	350	660	367
57007030	615	630	630	450	350	660	395

Esecuzioni speciali a richiesta

Portapezzi Modulari

Cubi rettangolari per piastre riportate

- Acciaio
- Con fori griglia per piastre

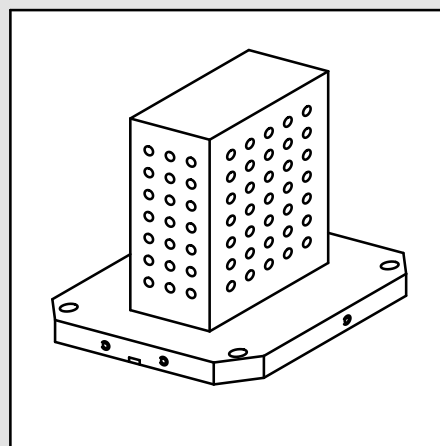
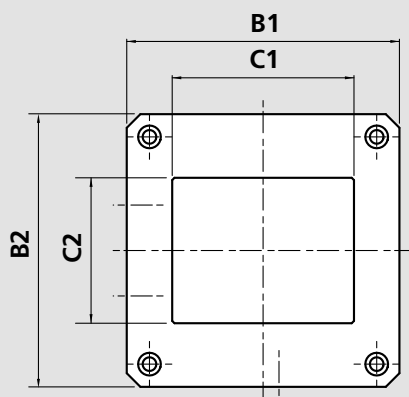
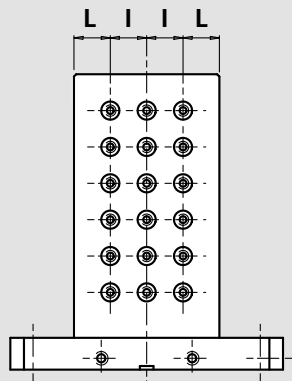
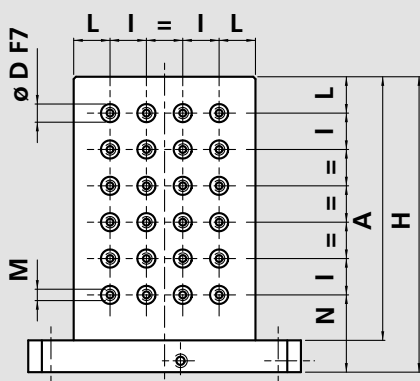


ACCIAIO

Cod.	A mm	B1 mm	B2 mm	C1 mm	C2 mm	H mm	Ø D mm	M	E mm	F mm	G mm	G1 mm	Peso kg
57070015	615	500	400	350	250	655	16	M 12	250	500	125	75	250
57070020	615	500	500	350	250	655	16	M 12	250	500	125	75	265
57070035	615	630	500	450	350	660	16	M 12	250	500	175	125	367
57070040	615	630	630	450	350	660	16	M 12	250	500	175	125	395

Esecuzioni speciali a richiesta

- Acciaio
- Con fori griglia per piastre



ACCIAIO

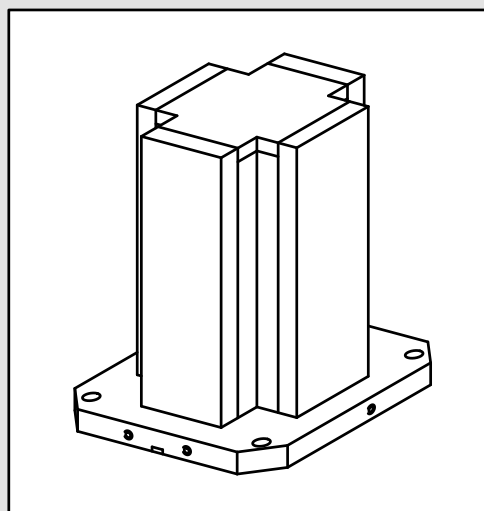
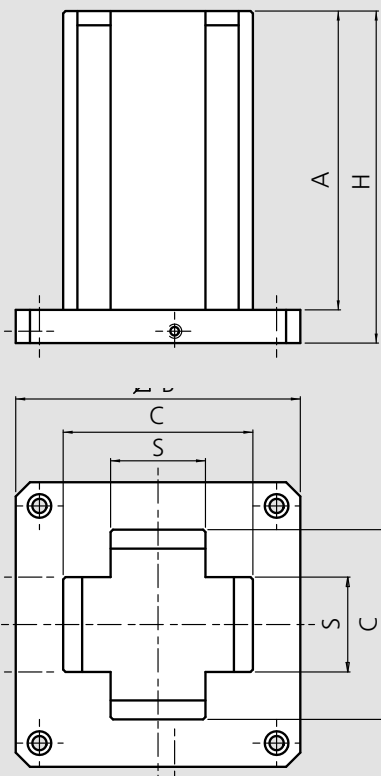
Cod.	A mm	B1 mm	B2 mm	C1 mm	C2 mm	H mm	Ø D mm	M	I mm	L mm	N mm	Peso kg
57080015	615	500	400	350	250	655	16	M 12	50	50	105	242
57080020	615	500	500	350	250	655	16	M 12	50	50	105	257
57080035	615	630	500	450	350	660	16	M 12	50	50	110	355
57080040	615	630	630	450	350	660	16	M 12	50	50	110	383

Esecuzioni speciali a richiesta

Portapezzi Modulari

Cubi a croce solo fresati

■ Acciaio o alluminio



ACCIAIO

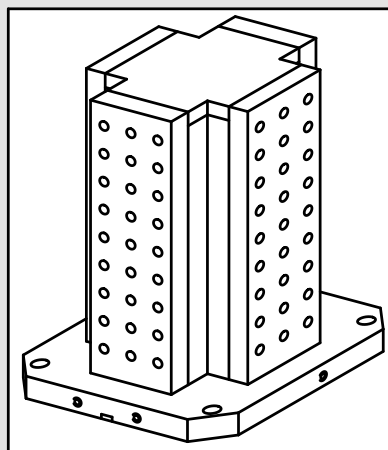
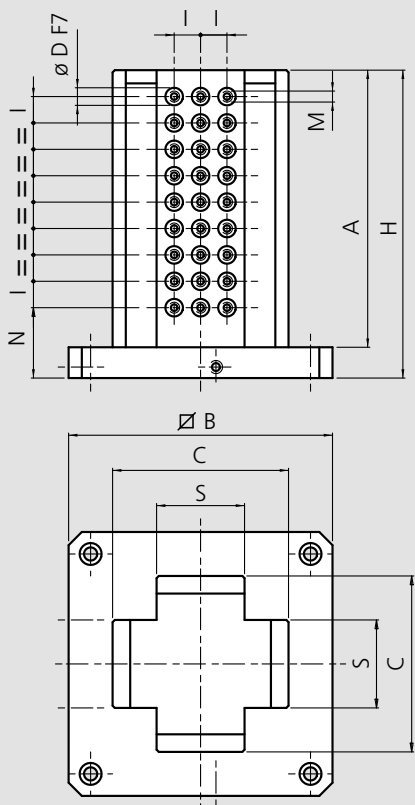
Cod.	A mm	B mm	C mm	H mm	S mm	Peso kg
57061010	540	400	300	580	150	208
57061015	540	500	300	580	150	236
57061020	795	630	550	840	150	451
57061025	625	500	350	670	200	296
57061030	625	630	350	670	200	356
57061035	650	400	250	690	100	142
57061040	650	500	300	690	100	187

ALLUMINIO

Cod.	A mm	B mm	C mm	H mm	S mm	Peso kg
57316110	540	400	300	580	150	82
57316115	540	500	300	580	150	92
57316135	650	400	250	690	100	79
57316140	650	500	250	690	100	88

Esecuzioni speciali a richiesta

- Acciaio o alluminio
- Con fori griglia per piastre



ACCIAIO

Cod.	A mm	B mm	C mm	H mm	$\varnothing D$ mm	M	I mm	N mm	S mm	Peso kg
57060010	540	400	300	580	16	M12	50	85	150	208
57060015	540	500	300	580	16	M12	50	85	150	236
57060020	795	630	550	840	16	M12	50	100	150	451
57060025	625	500	350	670	16	M12	50	120	200	296
57060030	625	630	350	670	16	M12	50	120	200	356

ALLUMINIO

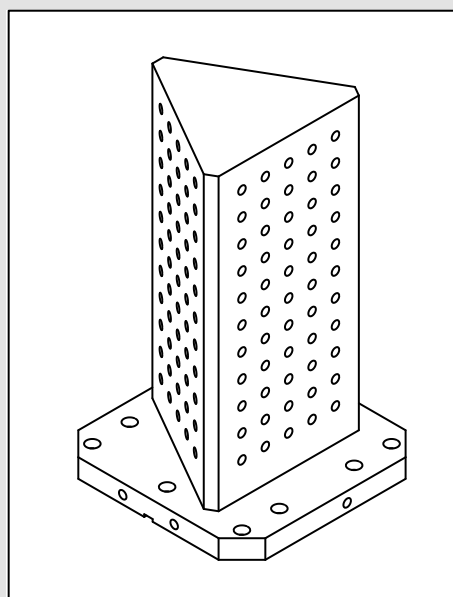
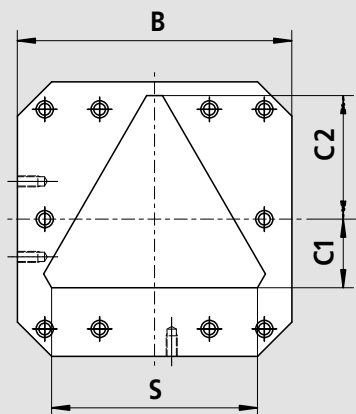
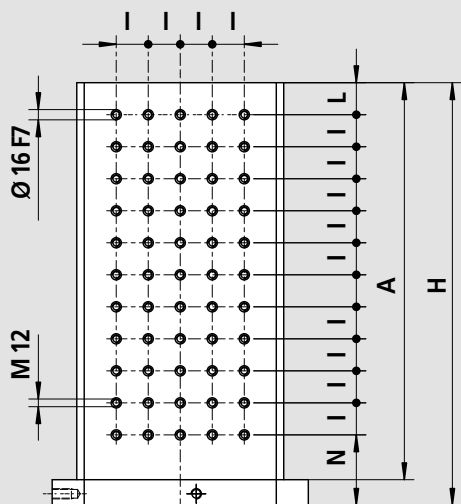
Cod.	A mm	B mm	C mm	H mm	$\varnothing D$ mm	M	I mm	N mm	S mm	Peso kg
57316010	540	400	300	580	16	M12	50	85	150	82
57316015	540	500	300	580	16	M12	50	85	150	92

Esecuzioni speciali a richiesta

Portapezzi Modulari

Cubi triangolari a reticolo

- Acciaio
- Con fori griglia per piastre

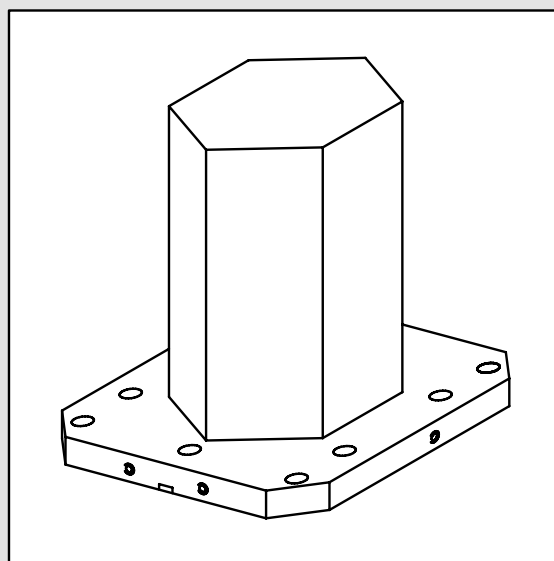
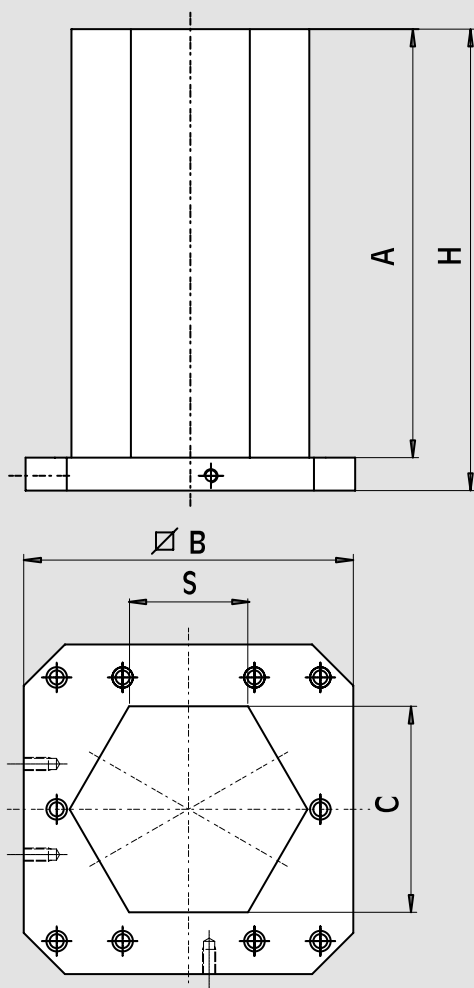


ACCIAIO

Cod.	A mm	B mm	C1 mm	C2 mm	H mm	I mm	L mm	N mm	S mm	Peso kg
57171010	620	400	100	180	660	50	50	110	300	200
57171020	620	500	100	180	660	50	50	110	300	227

Esecuzioni speciali a richiesta

■ Acciaio o alluminio



ACCIAIO

Cod.	A mm	B mm	C mm	H mm	S mm	Peso kg
57003000	650	400	250	690	140	191
57003010	650	500	250	690	140	220
57003020	650	630	380	690	215	361

ALLUMINIO

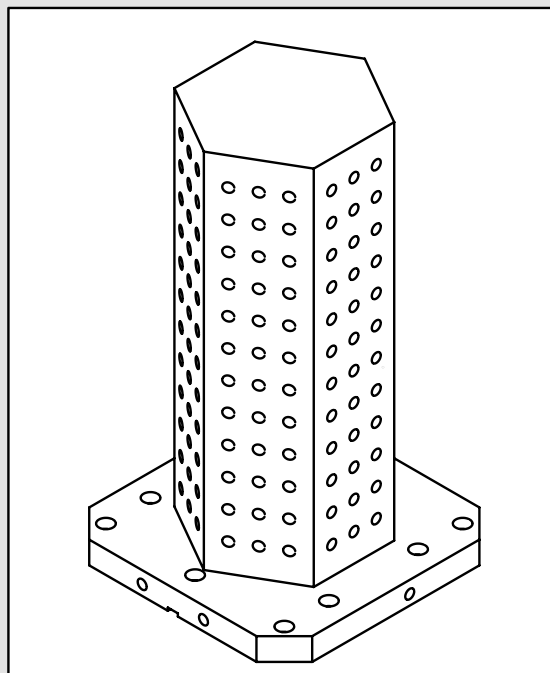
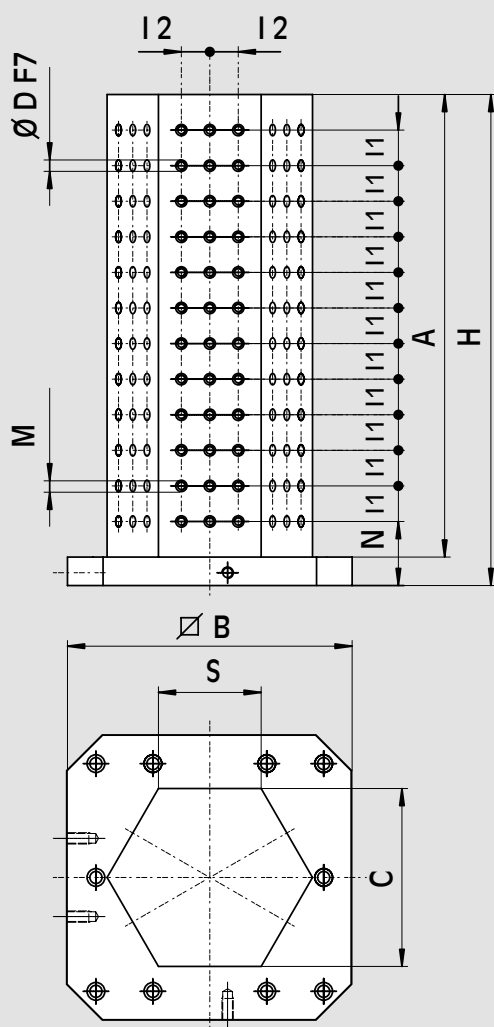
Cod.	A mm	B mm	C mm	H mm	S mm	Peso kg
57303000	650	400	250	690	140	78
57303010	650	500	250	690	140	87
57303020	650	630	380	690	215	140

Esecuzioni speciali a richiesta

Portapezzi Modulari

Cubi esagonali a reticolo

- Acciaio o alluminio
- Con fori griglia per piastre



ACCIAIO

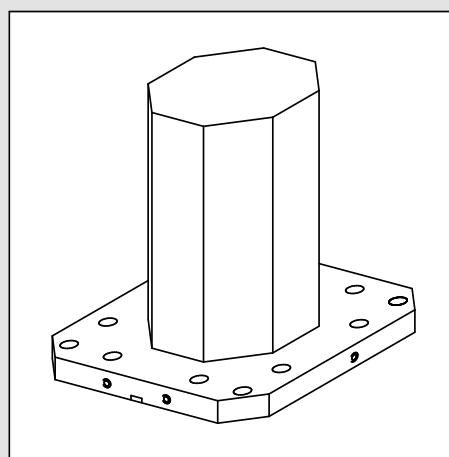
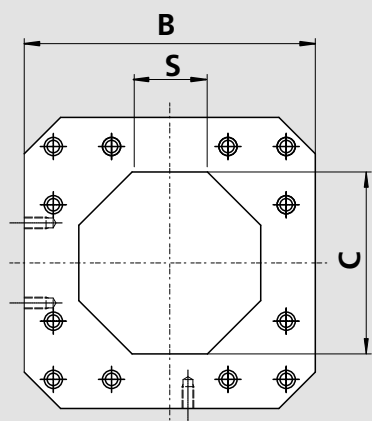
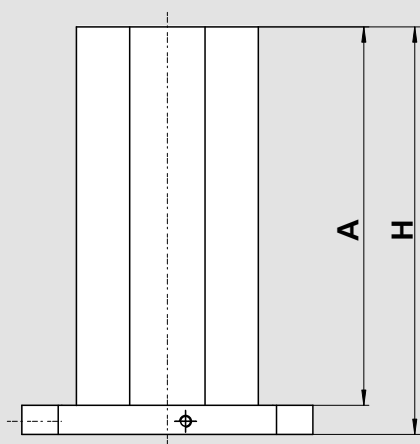
Cod.	A mm	B mm	C mm	H mm	Ø D mm	M	I 1 mm	I 2 mm	N mm	S mm	Peso kg
57172010	650	400	250	690	16	M 12	50	40	90	140	182
57172020	650	500	250	690	16	M 12	50	40	90	140	211
57172030	650	630	380	690	16	M 12	50	50	90	215	352

ALLUMINIO

Cod.	A mm	B mm	C mm	H mm	Ø D mm	M	I 1 mm	I 2 mm	N mm	S mm	Peso kg
57335010	650	400	250	690	16	M 12	50	40	90	140	75
57335020	650	500	250	690	16	M 12	50	40	90	140	84
57335030	650	630	380	690	16	M 12	50	50	90	215	136

Esecuzioni speciali a richiesta

■ Acciaio o alluminio



ACCIAIO

Cod.	A mm	B mm	C mm	H mm	S mm	Peso kg
57004000	650	400	250	690	100	185
57004010	650	500	250	690	100	213
57004020	650	630	380	690	155	351

ALLUMINIO

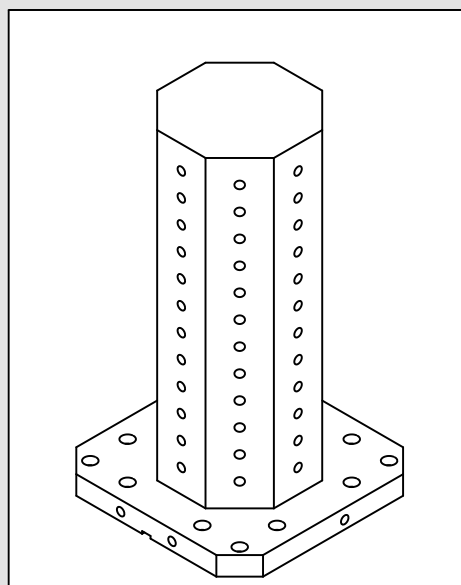
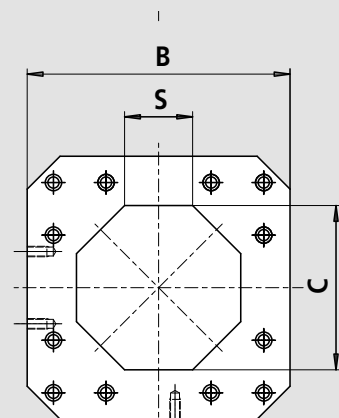
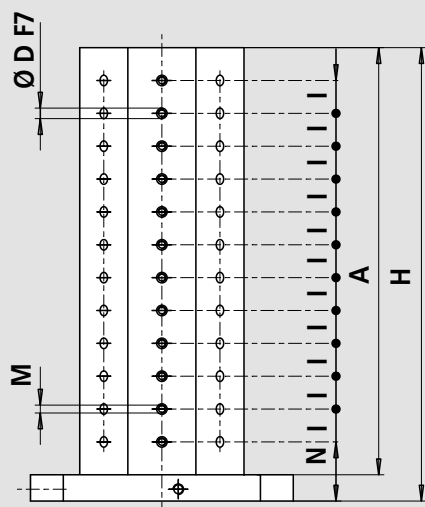
Cod.	A mm	B mm	C mm	H mm	S mm	Peso kg
57304000	650	400	250	690	100	79
57304010	650	500	250	690	100	88
57304020	650	630	380	690	155	138

Esecuzioni speciali a richiesta

Portapezzi Modulari

Cubi ottagonali a reticolo

- Acciaio o alluminio
- Con fori griglia per piastre



ACCIAIO

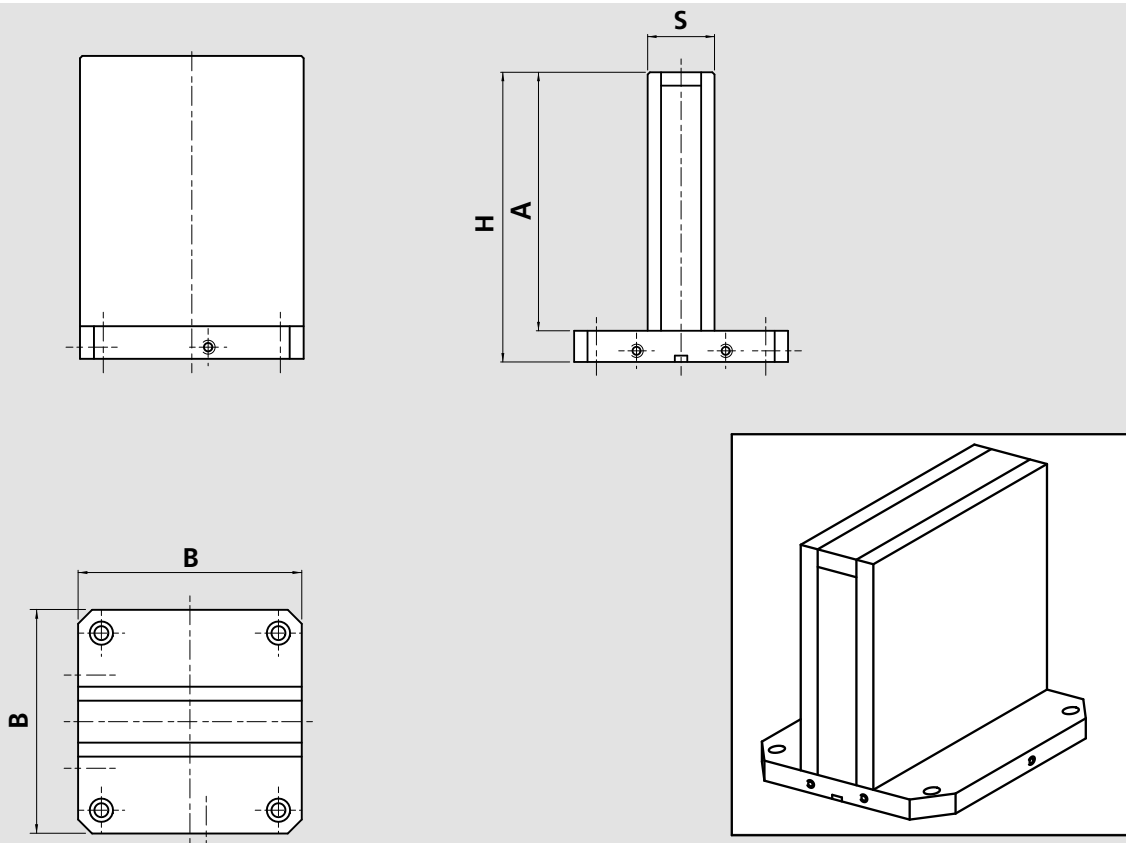
Cod.	A mm	B mm	C mm	H mm	Ø D mm	M	I mm	N mm	S mm	Peso kg
57173010	650	400	250	690	16	M 12	50	90	100	181
57173020	650	500	250	690	16	M 12	50	90	100	209
57173030	650	630	380	690	16	M 12	50	90	155	339

ALLUMINIO

Cod.	A mm	B mm	C mm	H mm	Ø D mm	M	I mm	N mm	S mm	Peso kg
57336010	650	400	250	690	16	M 12	50	90	100	78
57336020	650	500	250	690	16	M 12	50	90	100	87
57336030	650	630	380	690	16	M 12	50	90	155	136

Esecuzioni speciali a richiesta

■ Acciaio, alluminio o ghisa



ACCIAIO

Sgrossati Cod.	Finiti Cod.	A mm	B mm	H mm	S mm	Peso kg
57009026	57009025	620	400	660	150	212
57009046	57009045	660	500	700	150	287
57009066	57009065	815	630	860	200	482
57009091	57009090	945	800	1000	260	810

ALLUMINIO

Cod.	A mm	B mm	H mm	S mm	Peso kg
57309025	620	400	660	150	77
57309045	660	500	700	150	103
57309065	815	630	860	200	172

GHISA

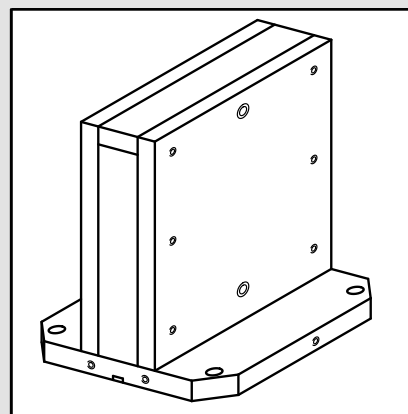
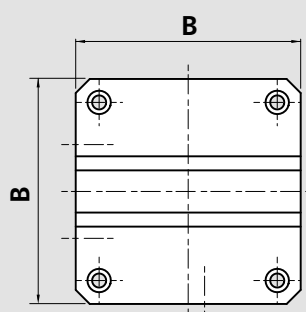
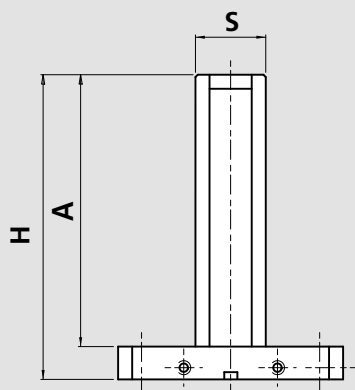
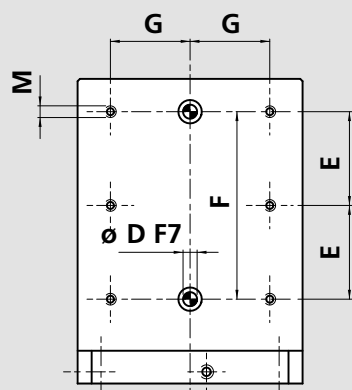
Sgrossati Cod.	Finiti Cod.	A mm	B mm	H mm	S mm	Peso kg
57409026	57409025	615	400	660	150	185
57409046	57409045	655	500	700	150	247
57409066	57409065	810	630	860	200	448
57409091	57409090	945	800	1000	300	810

Esecuzioni speciali a richiesta

Portapezzi Modulari

Spalle per piastre riportate

■ Acciaio, alluminio o ghisa



ACCIAIO

Cod.	A mm	B mm	H mm	Ø D mm	M	E mm	F mm	G mm	S mm	Peso kg
57041035	620	400	660	16	M 12	250	500	150	150	212
57041055	660	500	700	16	M 12	250	500	200	150	287
57041075	815	630	860	16	M 12	350	700	250	200	482
57041100	945	800	1000	16	M 12	100	800	350	260	810

ALLUMINIO

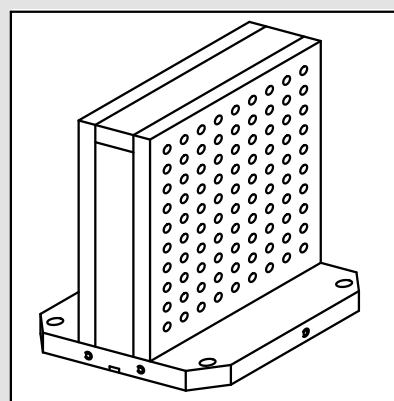
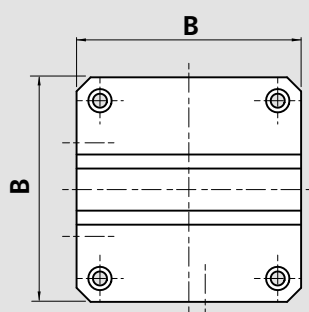
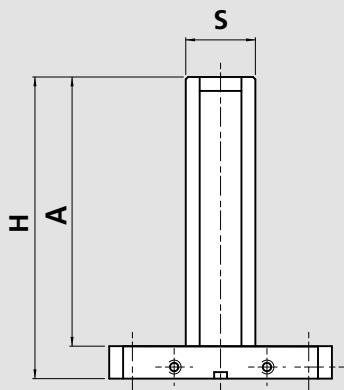
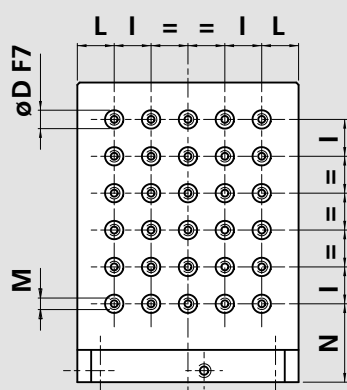
Cod.	A mm	B mm	H mm	Ø D mm	M	E mm	F mm	G mm	S mm	Peso kg
57328035	620	400	660	16	M 12	250	500	150	150	77
57328055	660	500	700	16	M 12	250	500	200	150	103
57328075	815	630	860	16	M 12	350	700	250	200	180

GHISA

Cod.	A mm	B mm	H mm	Ø D mm	M	E mm	F mm	G mm	S mm	Peso kg
57428035	615	400	660	16	M 12	250	500	150	150	185
57428055	655	500	700	16	M 12	250	500	200	150	247
57428075	810	630	860	16	M 12	350	700	250	200	448
57428100	945	800	1000	16	M 12	400	800	350	300	810

Esecuzioni speciali a richiesta

- Acciaio, alluminio o ghisa
- Con fori griglia per piastre



ACCIAIO

Cod.	A mm	B mm	H mm	Ø D mm	M	I mm	L mm	N mm	S mm	Peso kg
57040035	620	400	660	16	M 12	50	50	110	150	206
57040055	660	500	700	16	M 12	50	50	100	150	279
57040075	815	630	860	16	M 12	50	40	110	200	468
57040100	945	800	1000	16	M 12	50	50	100	260	787

ALLUMINIO

Cod.	A mm	B mm	H mm	Ø D mm	M	I mm	L mm	N mm	S mm	Peso kg
57314035	620	400	660	16	M 12	50	50	110	150	74
57314055	660	500	700	16	M 12	50	50	100	150	100
57314075	815	630	860	16	M 12	50	40	110	200	170

GHISA

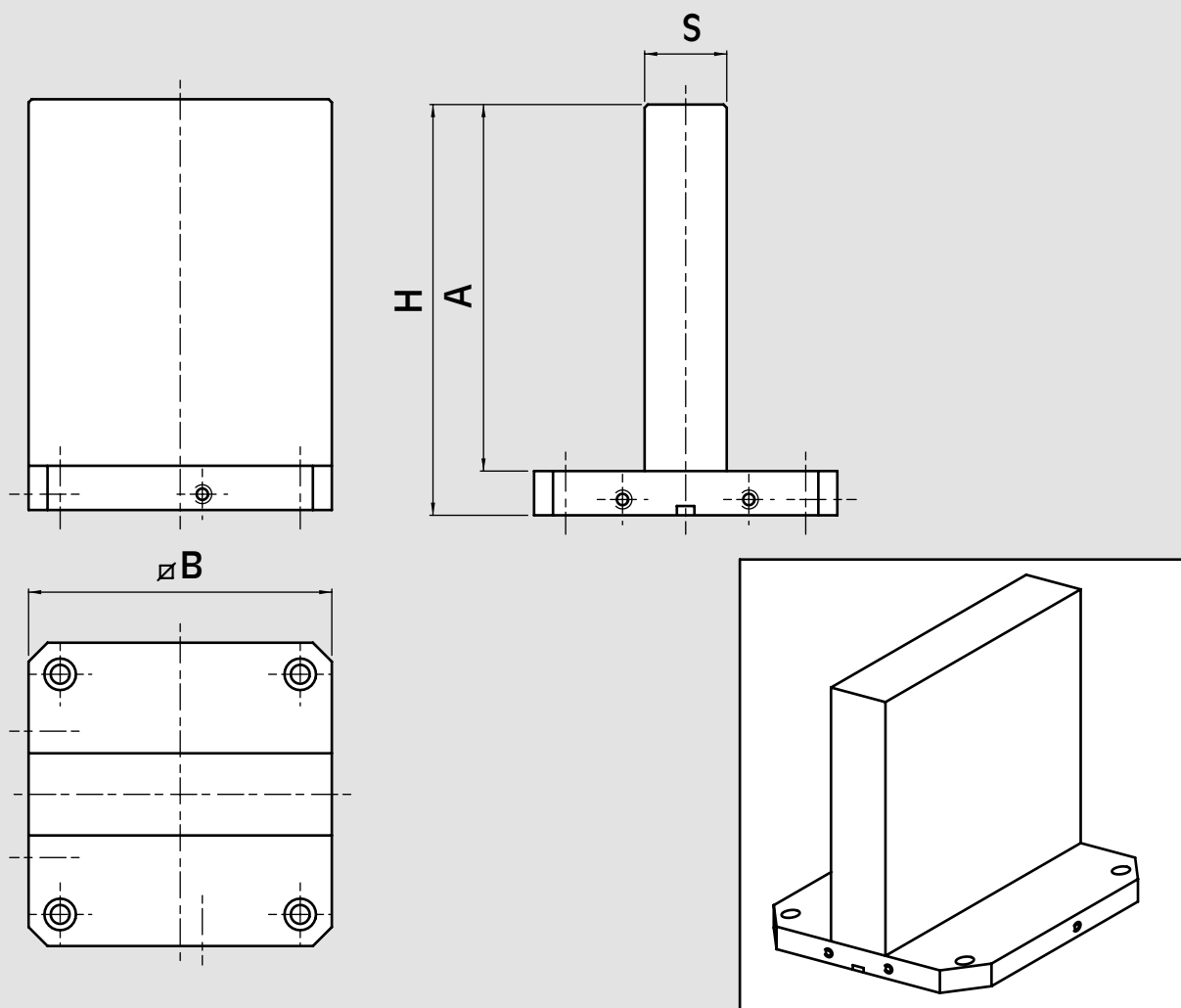
Cod.	A mm	B mm	H mm	Ø D mm	M	I mm	L mm	N mm	S mm	Peso kg
57414035	615	400	660	16	M 12	50	50	110	150	180
57414055	655	500	700	16	M 12	50	50	100	150	240
57414075	810	630	860	16	M 12	50	40	110	200	440
57414100	945	800	1000	16	M 12	50	50	100	300	790

Esecuzioni speciali a richiesta

Portapezzi Modulari

Spalle integrali solo fresate

■ Acciaio o alluminio



ACCIAIO

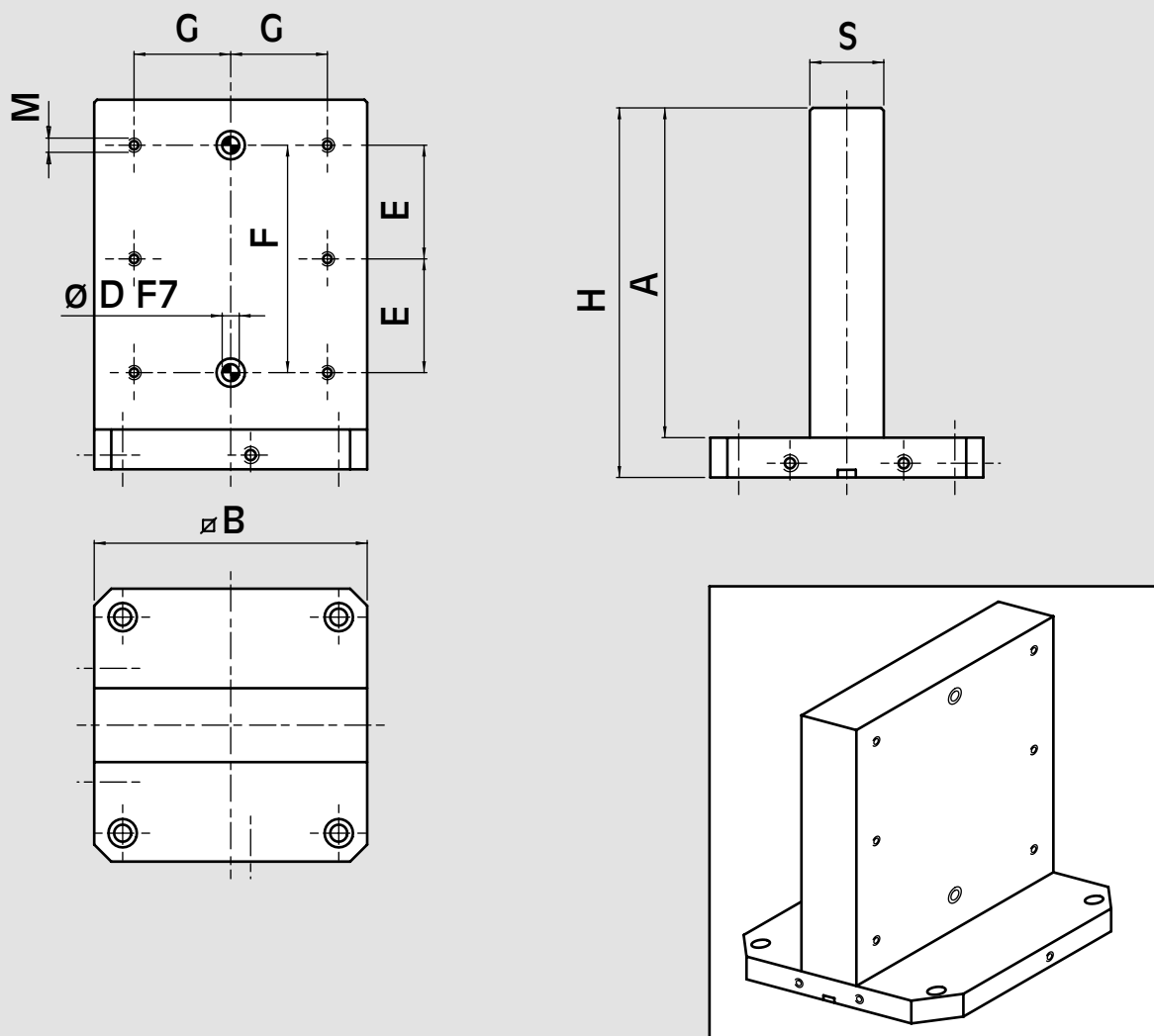
Cod.	A mm	B mm	H mm	S mm	Peso kg
57008030	370	320	410	80	107
57008040	480	400	520	100	201
57008050	580	500	620	100	306

ALLUMINIO

Cod.	A mm	B mm	H mm	S mm	Peso kg
57308020	270	250	310	80	23

Esecuzioni speciali a richiesta

■ Acciaio o alluminio



ACCIAIO

Cod.	A mm	B mm	Ø D mm	M	E mm	F mm	G mm	H mm	S mm	Peso kg
57090040	370	320	16	M 12	125	250	110	410	80	107
57090050	480	400	16	M 12	175	350	150	520	100	201
57090060	580	500	16	M 12	225	450	200	620	100	306

ALLUMINIO

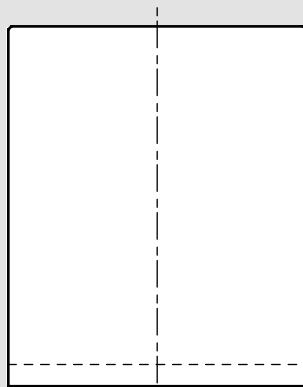
Cod.	A mm	B mm	Ø D mm	M	E mm	F mm	G mm	H mm	S mm	Peso kg
57319030	270	250	16	M 12	75	150	75	310	80	23

Esecuzioni speciali a richiesta

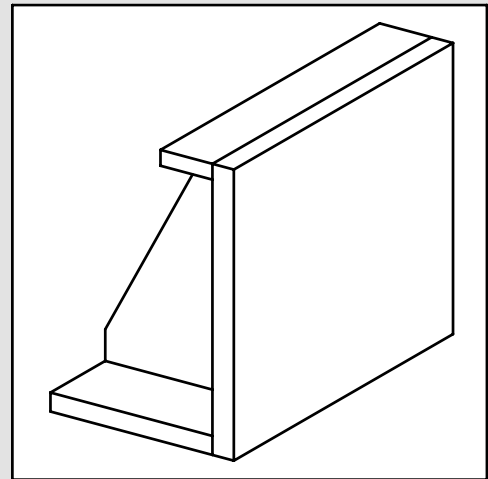
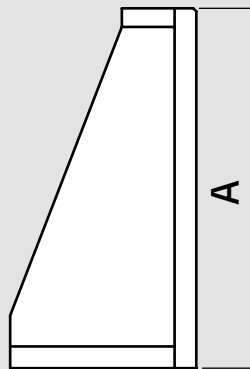
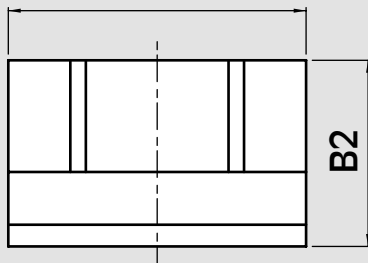
Portapezzi Modulari

Squadre solo fresate

■ Acciaio



B1



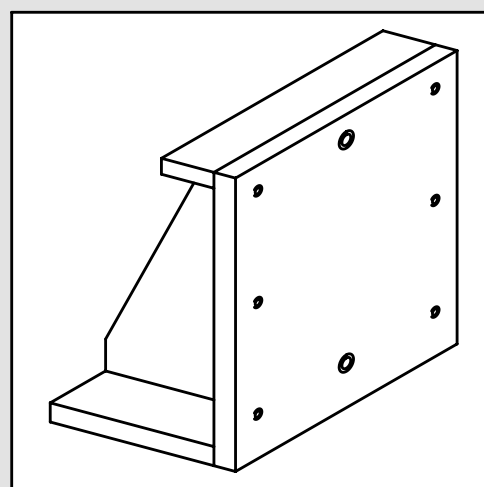
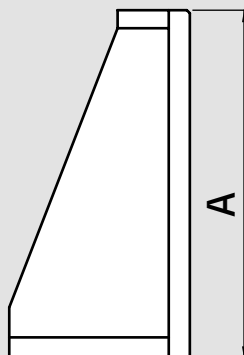
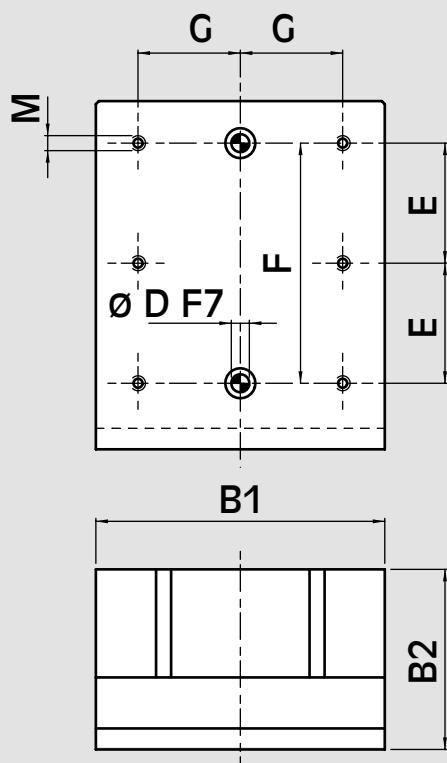
ACCIAIO

Cod.	A mm	A mm	A mm	Peso kg
57005030	360	320	230	66
57005040	460	400	330	130
57005050	510	400	330	139
57005060	510	500	330	182
57005070	560	500	330	196
57005080	560	630	430	305
57005090	660	630	430	343

Esecuzioni speciali a richiesta

■ Acciaio

1



ACCIAIO

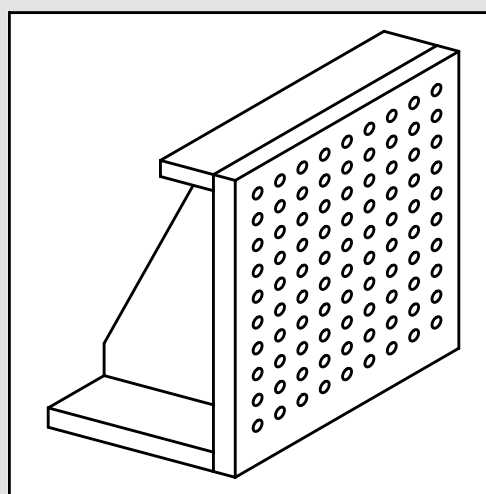
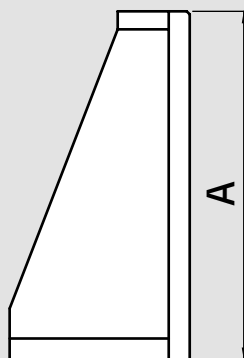
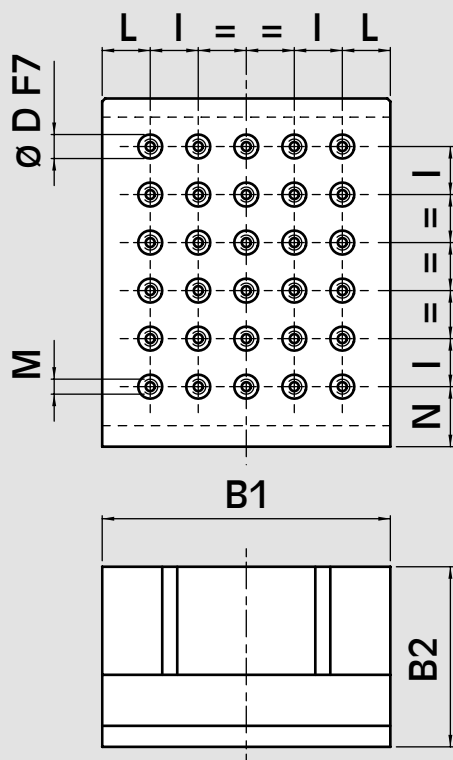
Cod.	A mm	B1 mm	B2 mm	Ø D mm	M	E mm	F mm	G mm	Peso kg
57100040	360	320	230	16	M 12	125	250	100	66
57100050	460	400	330	16	M 12	175	350	150	130
57100060	510	400	330	16	M 12	200	400	150	139
57100070	510	500	330	16	M 12	200	400	200	182
57100080	560	500	330	16	M 12	225	450	200	196
57100090	560	630	430	16	M 12	225	450	250	305
57100000	660	630	430	16	M 12	275	550	250	343

Esecuzioni speciali a richiesta

Portapezzi Modulari

Squadre a reticolo

- Acciaio
- Con fori griglia per piastre



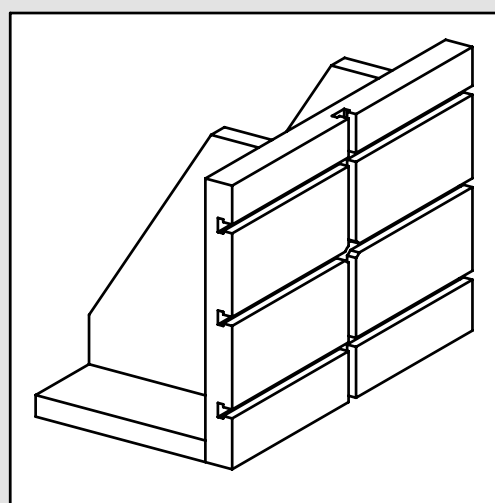
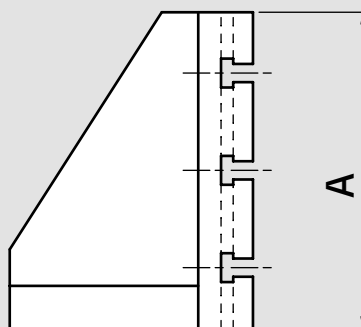
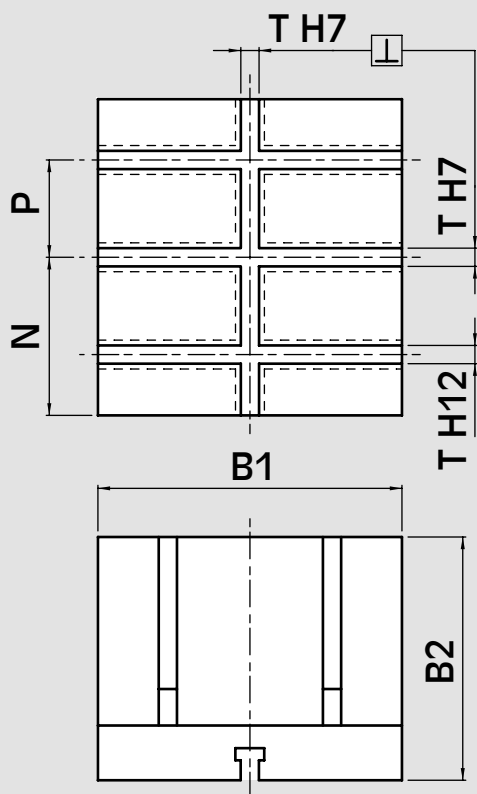
ACCIAIO

Cod.	A mm	B1 mm	B2 mm	Ø D mm	M	I mm	L mm	N mm	Peso kg
57110040	360	320	230	16	M 12	50	35	60	65
57110050	460	400	330	16	M 12	50	50	60	129
57110060	510	400	330	16	M 12	50	50	60	137
57110070	510	500	330	16	M 12	50	50	60	180
57110080	560	500	330	16	M 12	50	50	60	193
57110090	560	630	430	16	M 12	50	40	60	302
57110100	660	630	430	16	M 12	50	40	60	339

Esecuzioni speciali a richiesta

■ Acciaio

1



ACCIAIO

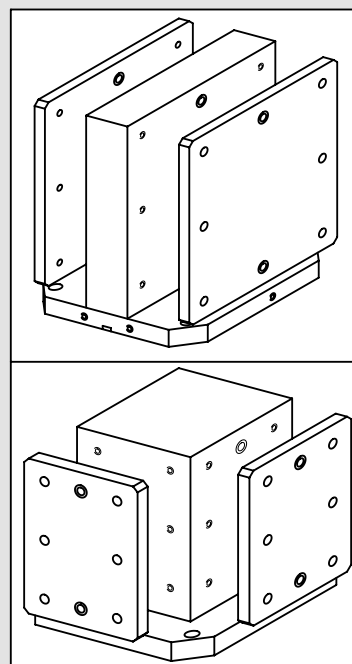
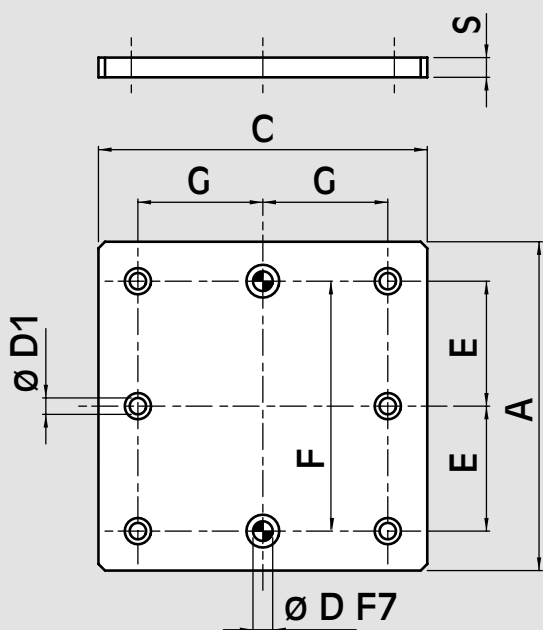
Cod.	A mm	B1 mm	B2 mm	N mm	P mm	T mm	l mm	Peso kg
57270010	360	350	230	180	120	12	0,01	76
57270020	500	350	330	250	160	12	0,02	125
57270030	460	450	330	230	150	12	0,02	145
57270040	600	450	330	300	190	14	0,025	176
57270050	350	500	230	175	100	14	0,02	102
57270060	500	550	330	250	160	14	0,02	197
57270070	800	550	400	400	260	14	0,025	318
57270080	450	600	330	225	130	16	0,02	193

Esecuzioni speciali a richiesta

Portapezzi Modulari

Piastre lisce rettificate

■ Acciaio

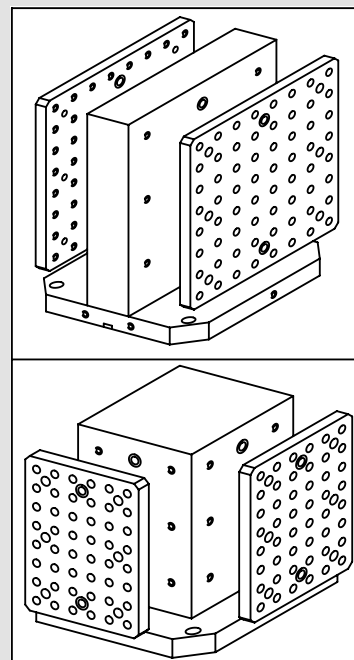
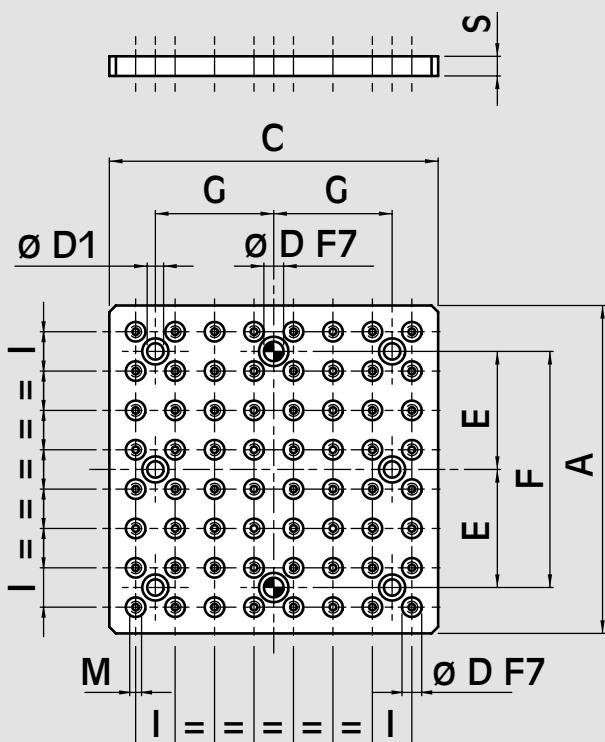


ACCIAIO

Cod.	C mm	A mm	Ø D mm	Ø D1 mm	E mm	F mm	G mm	S mm	Peso kg
57120025	160	400	12	11	150	300	40	20	10
57120090	250	600	16	13	250	500	75	25	29
57120130	350	600	16	13	250	500	125	25	41
57120155	400	600	16	13	250	500	150	25	47
57120175	450	800	16	13	350	700	175	25	70,5
57120195	500	600	16	13	250	500	200	25	58,5
57120210	550	800	16	13	350	700	225	25	86
57120235	630	800	16	13	350	700	250	25	98,5
57120250	800	800	16	13	350	700	350	30	149

Esecuzioni speciali a richiesta

- Acciaio
- Con fori griglia per piastre



ACCIAIO

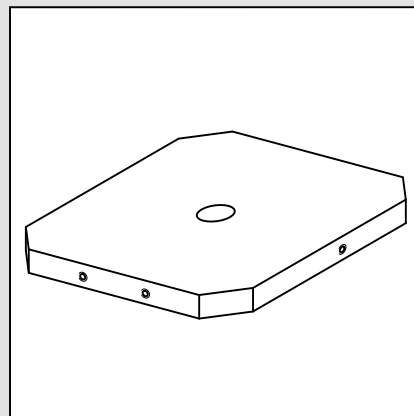
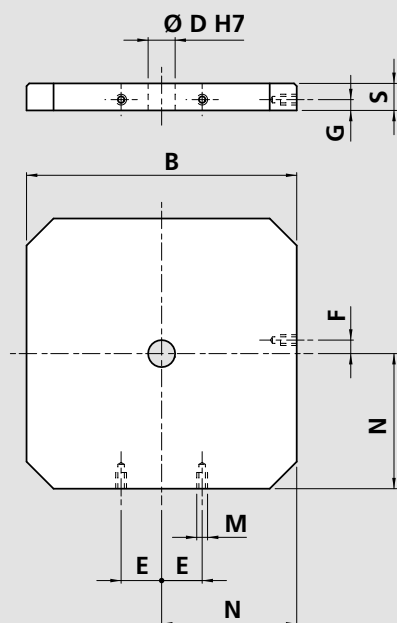
Cod.	C mm	A mm	Ø D mm	Ø D1 mm	M	E mm	F mm	G mm	I mm	S mm	Peso kg
57050025	160	400	12	11	M 10	150	300	40	40	30	15
57050090	250	600	16	13	M 12	250	500	75	50	35	39
57050130	350	600	16	13	M 12	250	500	125	50	35	55
57050155	400	600	16	13	M 12	250	500	150	50	35	63
57050175	450	800	16	13	M 12	350	700	175	50	35	95
57050195	500	600	16	13	M 12	250	500	200	50	35	78
57050210	550	800	16	13	M 12	350	700	225	50	35	114
57050235	630	800	16	13	M 12	350	700	250	50	35	131
57050250	800	800	16	13	M 12	350	700	350	50	35	166

Esecuzioni speciali a richiesta

Portapezzi Modulari

Sovratavole lisce rettificate

- Acciaio
- Senza fori griglia



ACCIAIO

Cod.	B mm	Ø D mm	M	N mm	E mm	F mm	G mm	S mm	Peso kg
57130010	320	30	-	160	-	-	-	40	30
57130020	400	50	M 16	200	55	25	18	40	48
57130030	450	50	-	225	-	-	-	40	61
57130040	500	50	M 16	250	75	25	18	40	76
57130050	550	50	-	275	-	-	-	40	93
57130060	630	50	M 16	315	100	25	18	40	121

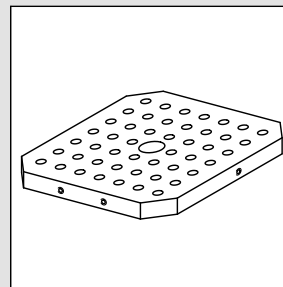
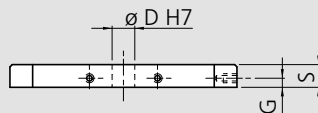
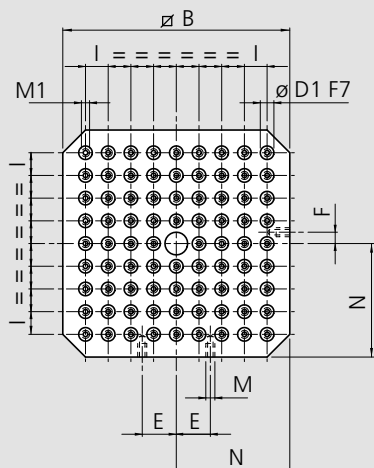
Esecuzioni speciali a richiesta

Sovratavole a reticolo rettificate

- Acciaio
- Con fori griglia

Portapezzi Modulari

1



ACCIAIO

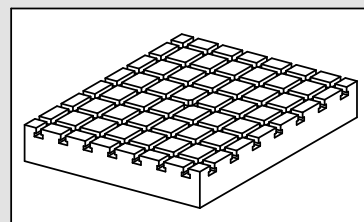
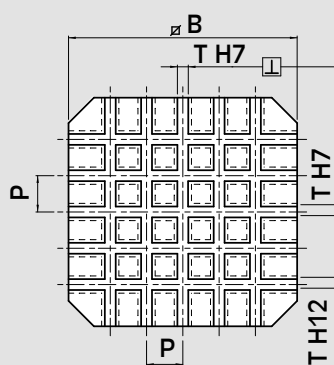
Cod.	B mm	Ø D mm	M	E mm	F mm	G mm	Ø D1 mm	M1	I mm	N mm	S mm	Peso kg
57140010	320	30	-	-	-	-	16	M12	50	160	40	29
57140020	400	50	M16	55	25	18	16	M12	50	200	40	47
57140030	450	50	-	-	-	-	16	M12	50	225	40	59
57140040	500	50	M16	75	25	18	16	M12	50	250	40	74
57140050	550	50	-	-	-	-	16	M12	50	275	40	90
57140060	630	50	M16	100	25	18	16	M12	50	315	40	117

Esecuzioni speciali a richiesta

Sovratavole con cave a T rettificate

- Acciaio

Portapezzi Modulari



ACCIAIO

Cod.	B mm	P mm	S mm	T mm	l mm	Peso Kg
57340010	400	56	80	12	0.015	85
57340020	450	65	100	14	0.015	137
57340030	500	70	100	14	0.02	171
57340040	550	80	100	14	0.02	210
57340050	630	100	100	14	0.025	284

Esecuzioni speciali a richiesta