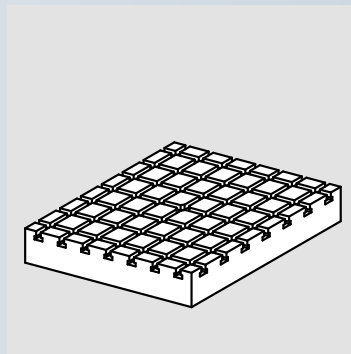
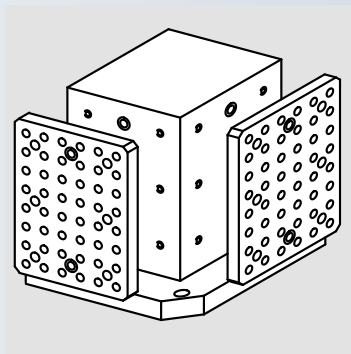
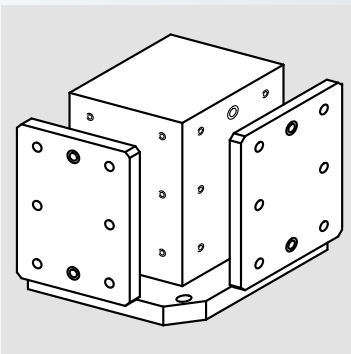
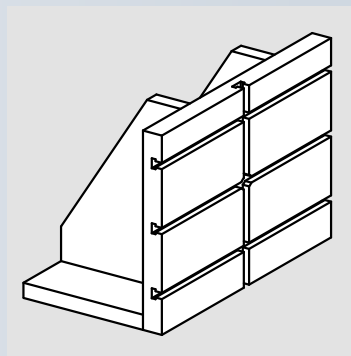
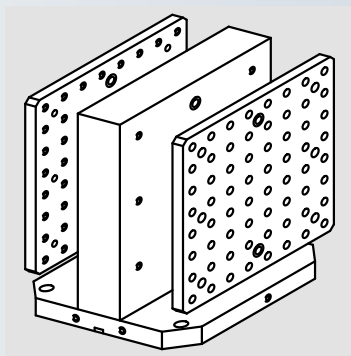
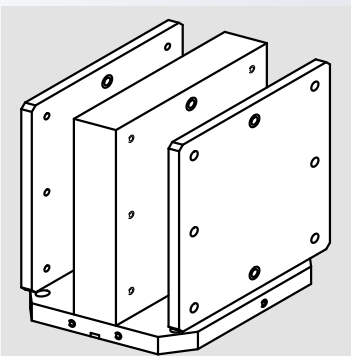
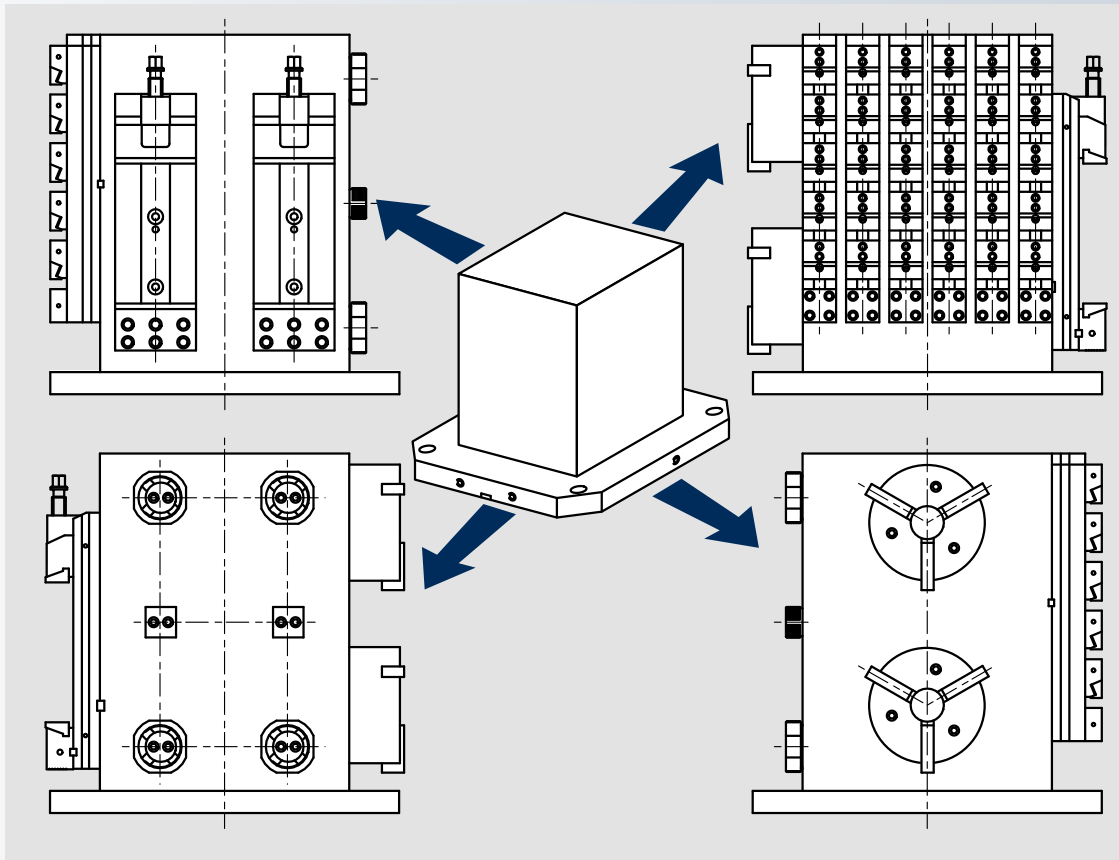


# I vantaggi della modularità

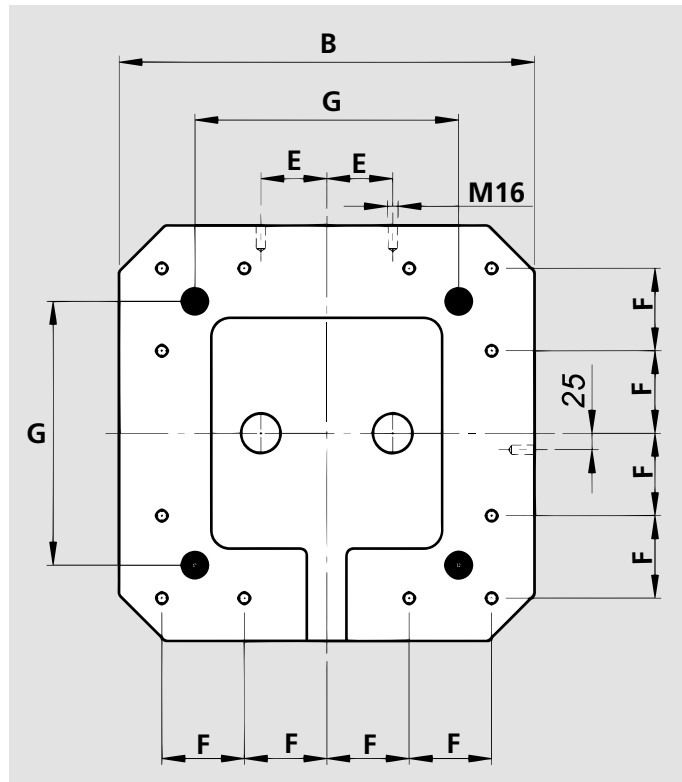


# Portapezzi Modulari

## Cubi

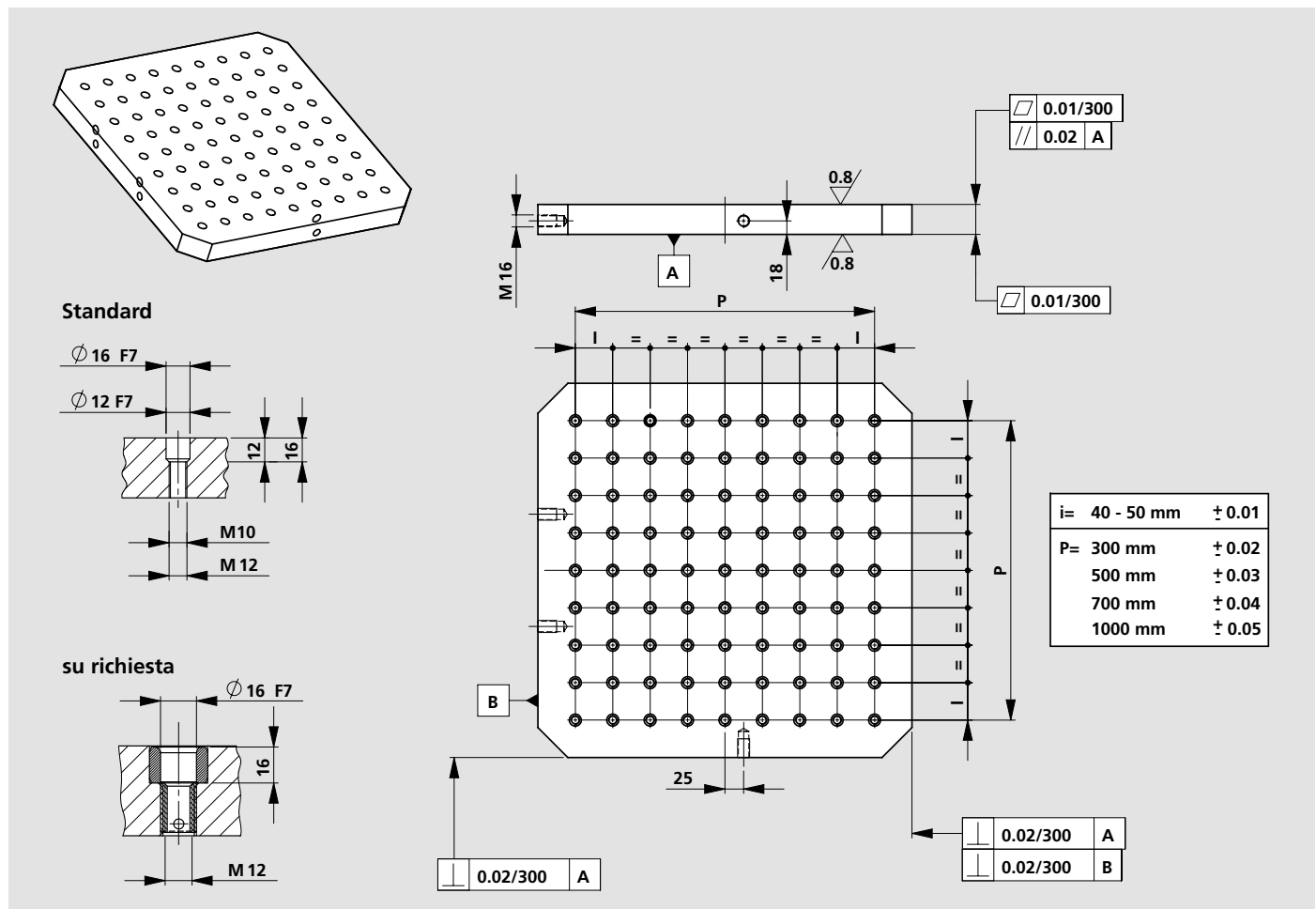
### ■ Interfacciamento tavole m.u.

I nostri prodotti (cubi, spalle) vengono forniti standard con la base predisposta per l'interfacciamento alla tavola della macchina utensile secondo le specifiche qui sotto riportate:

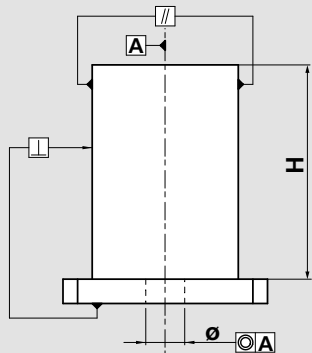


B mm	E mm	F mm	G mm
300	a richiesta	a richiesta	a richiesta
400	55	80	250
500	75	100	250
630	100	125	420
800	135	160	420

## Tolleranze costruttive

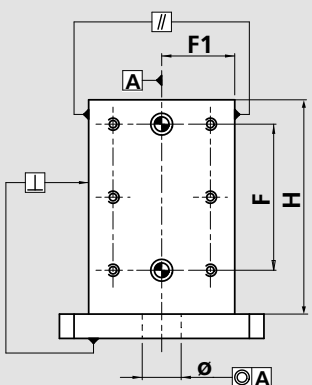


## Portapezzi fresati finiti



H	⊥	//	⊙
500 mm	0.020	0.020	0.020
1000 mm	0.035	0.035	0.035

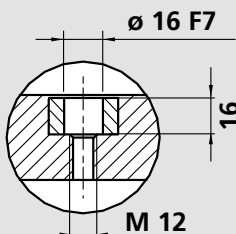
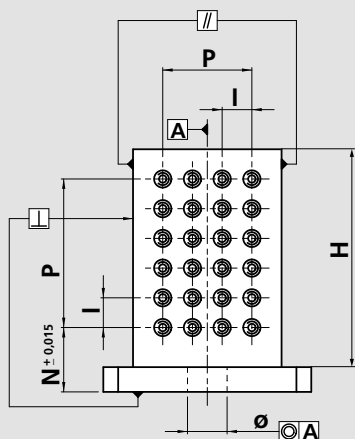
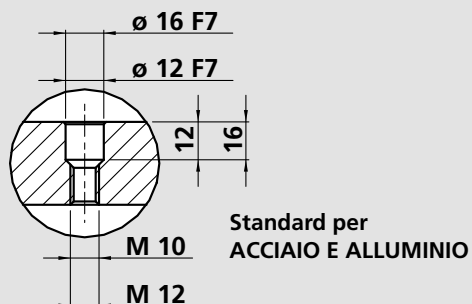
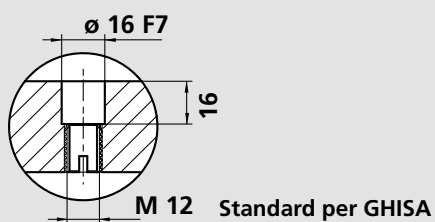
## Portapezzi per piastre riportate



H	⊥	//	⊙
500 mm	0.020	0.020	0.020
1000 mm	0.035	0.035	0.035

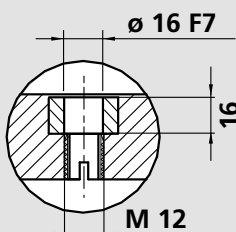
F= 300 mm	± 0.02
500 mm	± 0.03
700 mm	± 0.04
F1= 500 mm	± 0.015
1000 mm	± 0.025

## Portapezzi a reticolo



Speciale su richiesta solo per ALLUMINIO

H	⊥	//	⊙
500 mm	0.020	0.020	0.020
1000 mm	0.035	0.035	0.035



Speciale su richiesta solo per GHISA

i= 40 - 50 mm	± 0.01
P= 300 mm	± 0.02
500 mm	± 0.03
700 mm	± 0.04
1000 mm	± 0.05