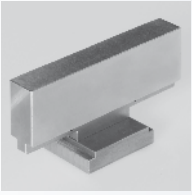
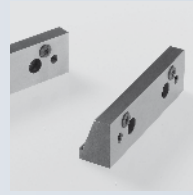


# SPECIAL JAWS AND ACCESSORIES



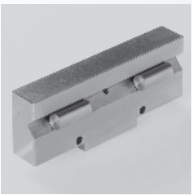
**Middle jaw  
CLAK SYSTEM**

Page 11.2



**Pair of jaws  
with grippers UGE**

Page 11.2



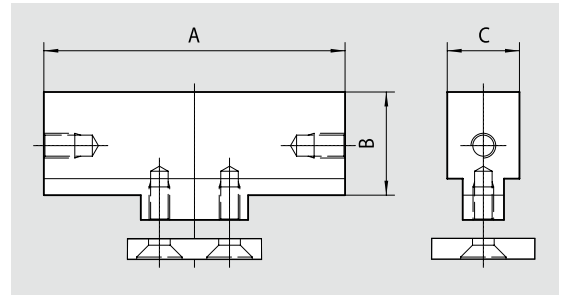
**Jaw with rolls**

Page 11.2

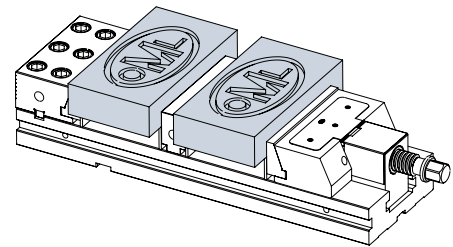
# SPECIAL JAWS

## SPECIAL JAWS AND ACCESSORIES

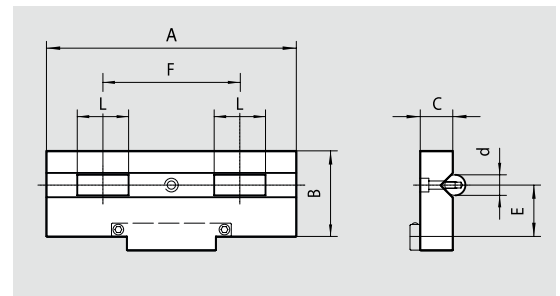
### Middle jaw CLAK SYSTEM



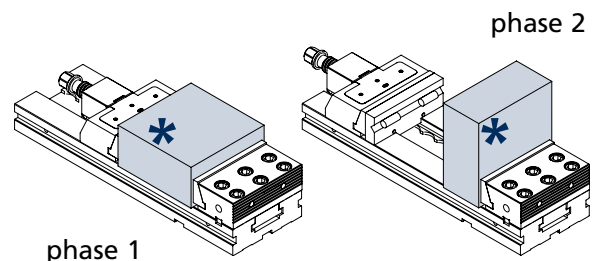
Id. No.	for type	A mm	B mm	C mm
58014109	TC110/MC 125	106	40	32
58024109	TC/MC 150	146	50	32
58034109	TC/MC 200	196	70	48



### Jaw with rolls

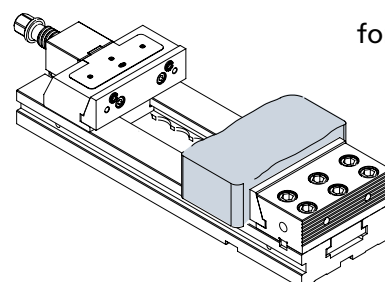
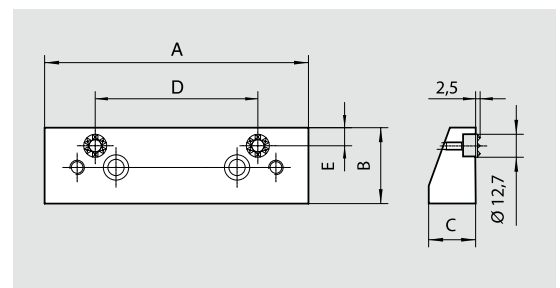


Id. No.	for type	A mm	B mm	C mm	d mm	E mm	F mm	L mm
58019709	TC110/MC 125	106	40	19	12	25	60	30
58029709	TC/MC 150	146	50	19	12	30	80	30
58039709	TC/MC 200	196	70	28	16	40	110	40



\* machined surface

### Pair of jaws with grippers UGE



for raw workpieces

Id. No.	for type	A mm	B mm	C mm	D mm	E mm
58024509	TC/MC 150	146	42	26	90	10
58034509	TC/MC 200	196	60	31	160	12