

# CAM SYSTEM

## Eccentric self-locking clamping device



### Set CAM SYSTEM "t"

Eccentric self-locking clamping device

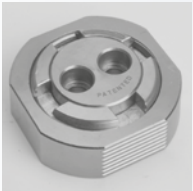
Page 7.3



### Set CAM SYSTEM "s"

Eccentric self-locking clamping device

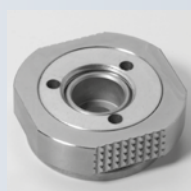
Page 7.6



### CAM SYSTEM "t"

Eccentric self-locking clamping device

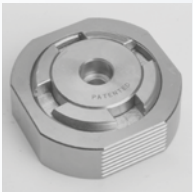
Page 7.4



### CAM SYSTEM "s"

Eccentric self-locking clamping device

Page 7.7



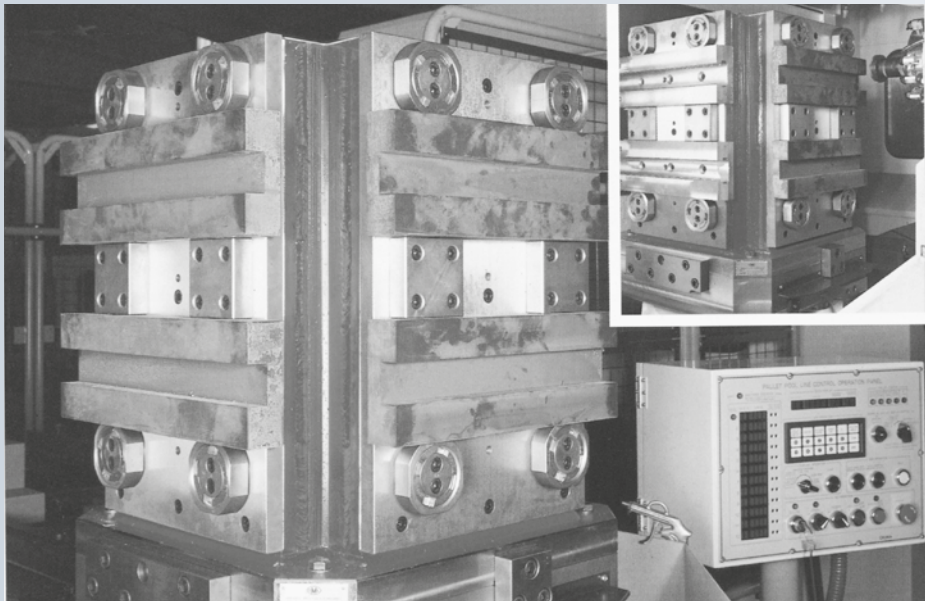
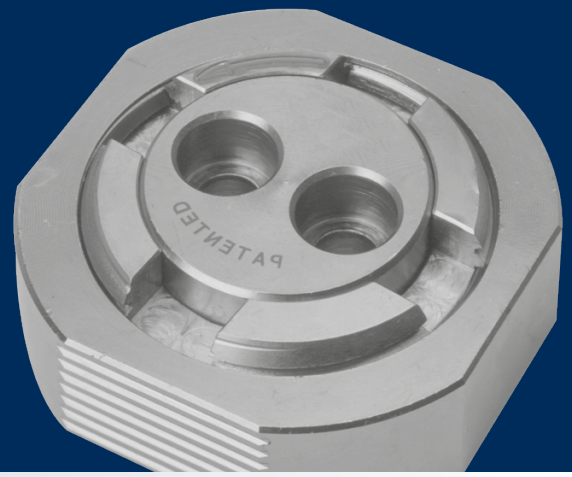
### CAM SYSTEM "g"

Eccentric self-locking clamping device

Page 7.5

# CAM SYSTEM

## Eccentric self-locking clamping device



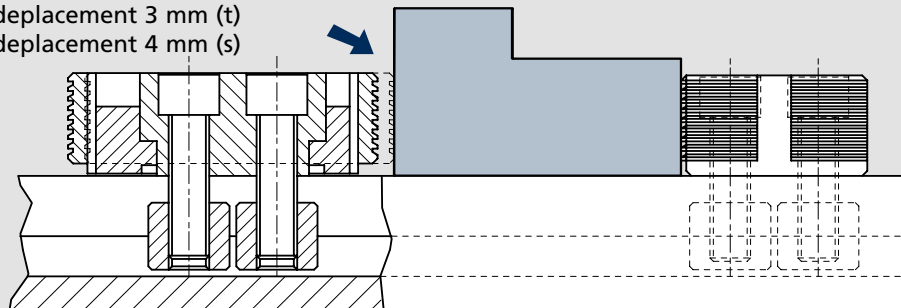
The **CAM SYSTEM** has been developed and patented to easily clamp workpieces with varied forms. This compact product enables double locking (Axial and Radial) using the eccentric and propeller principle. With a rotation of approximately 15°, contact is made with the workpiece with the complete clamping face of the CAM.

The **CAM SYSTEM** clamps the workpiece with a clamping force of 4,000 kg (**t**) and 2,000 kg (**s**).

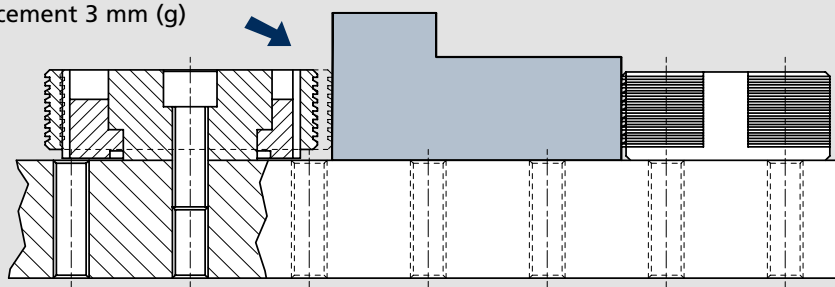
**CAM SYSTEM** is supplied with both cap head bolts and T-nuts to suit the particular machine tool cross slots.

**CAM SYSTEM "g"** is supplied singly, to the customer detailed grid specification.

displacement 3 mm (t)  
displacement 4 mm (s)



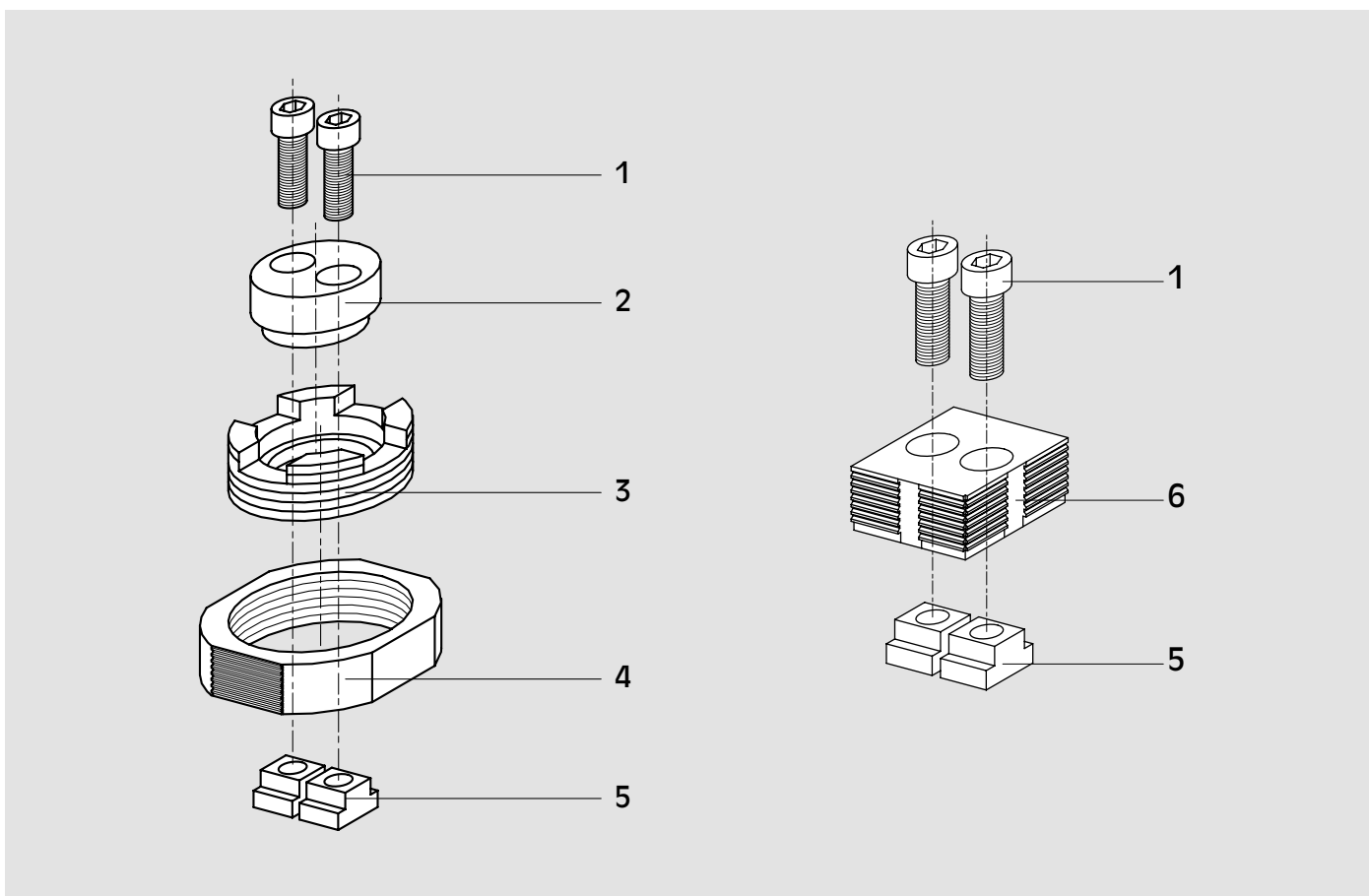
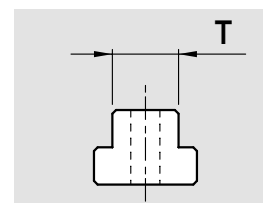
displacement 3 mm (g)





Set CAM SYSTEM "t" complete with:  
 N. 4 CAM SYSTEM "t"  
 N. 4 fixed block CAM SYSTEM 't'  
 N. 8 pair of T-nuts with screw  
 N. 1 key for CAM SYSTEM 't'  
 wooden packing case

Id. No.	T mm
77584414	14
77584416	16
77584418	18
77584420	20
77584422	22

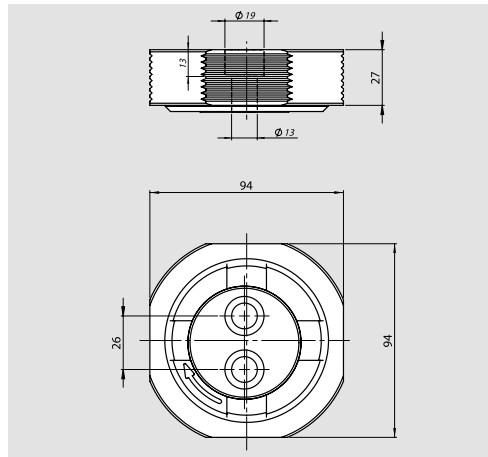


Description

01	Screw	03	Eccentric element	05	T-nuts
02	Central element	04	Clamping element	06	Fixed block

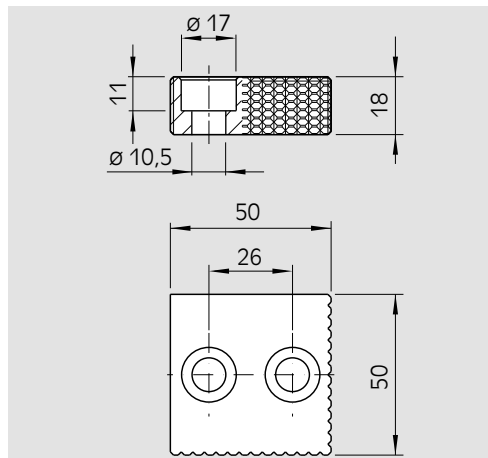
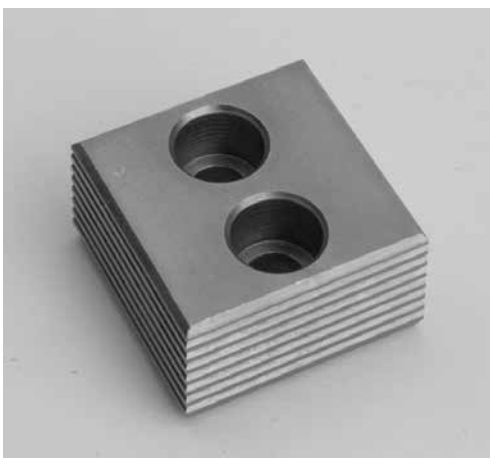
# CAM SYSTEM "t"

## Eccentric self-locking clamping device



**CAM SYSTEM "t"**  
single

**Id. No.**  
58445010



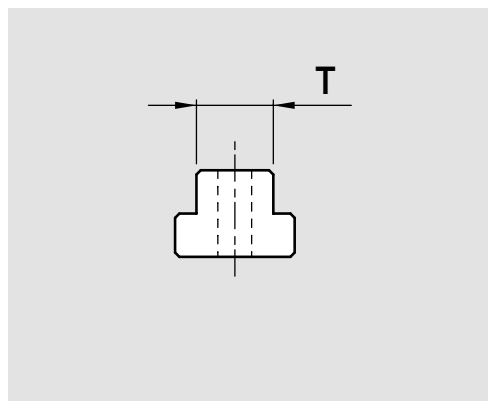
**Fixed block**  
**CAM SYSTEM "t"**

**Id. No.**  
58440400



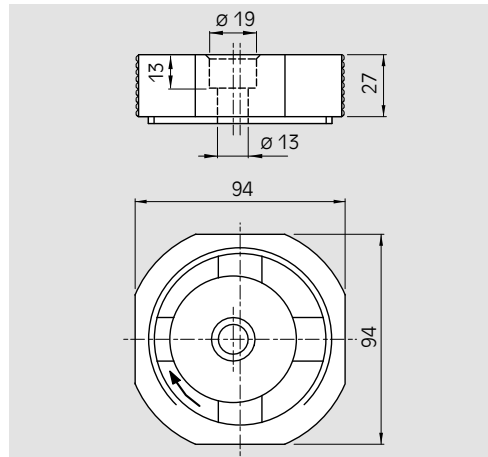
**Key for**  
**CAM SYSTEM "t"**

**Id. No.**  
58440800



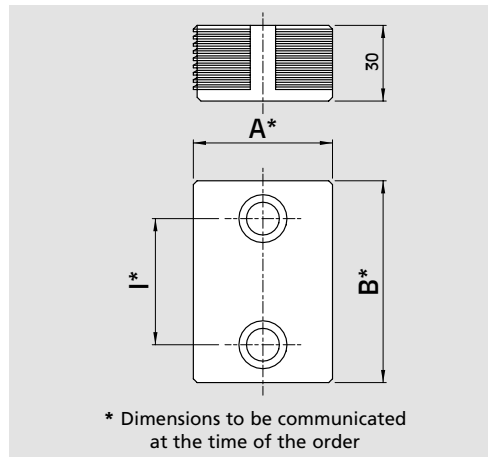
**Pair of T-nuts**  
**with screw**  
**CAM SYSTEM "t"**

Id. No.	T mm
58442593	14
58442594	16
58442595	18
58442596	20
58442597	22



CAM SYSTEM "g"  
single

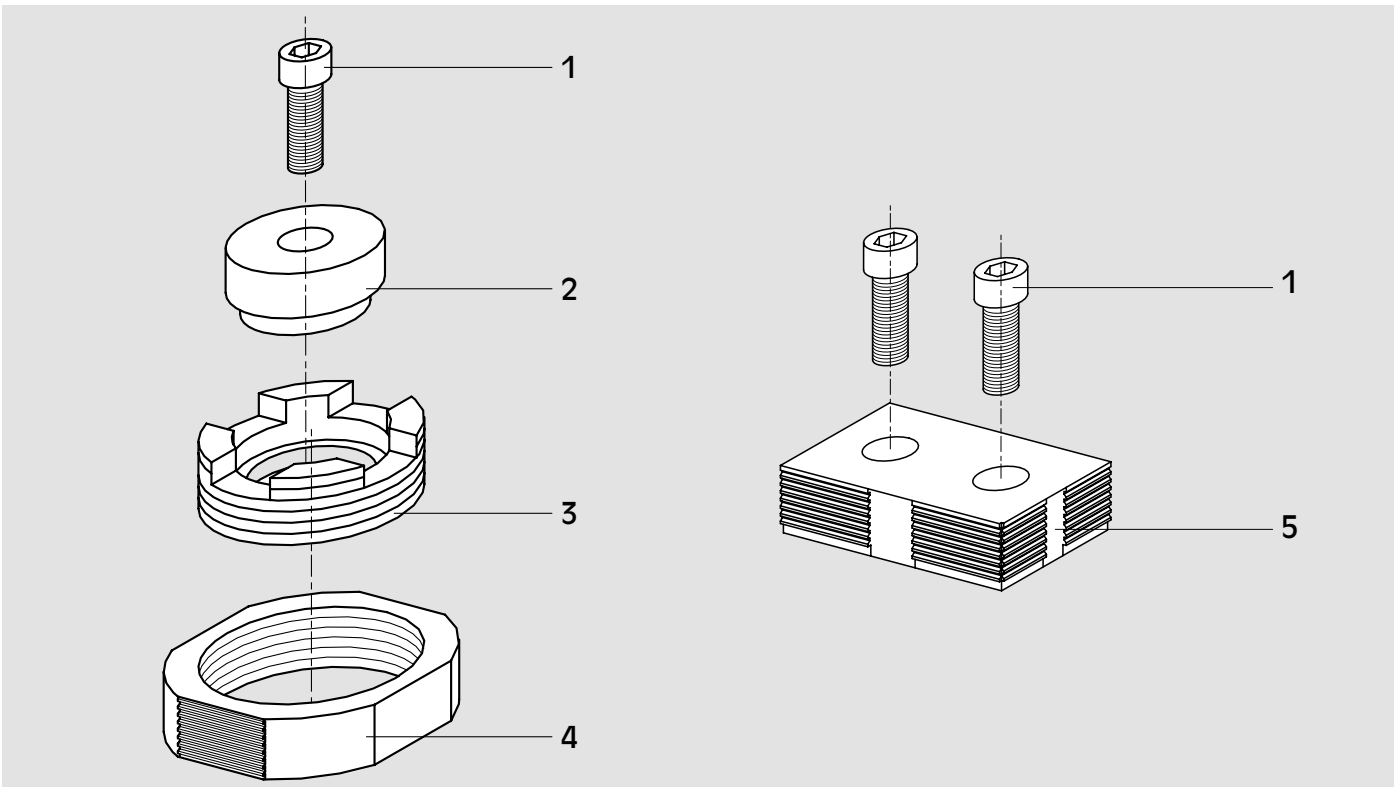
Id. No.  
58445020



Fixed block  
CAM SYSTEM "g"

Id. No.  
58441400

\* Dimensions to be communicated  
at the time of the order



Description

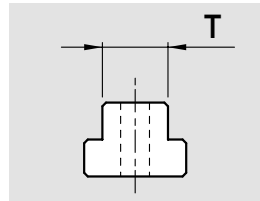
01	Screw	03	Eccentric element	05	Fixed block
02	Central element	04	Clamping element		

# CAM SYSTEM "s"

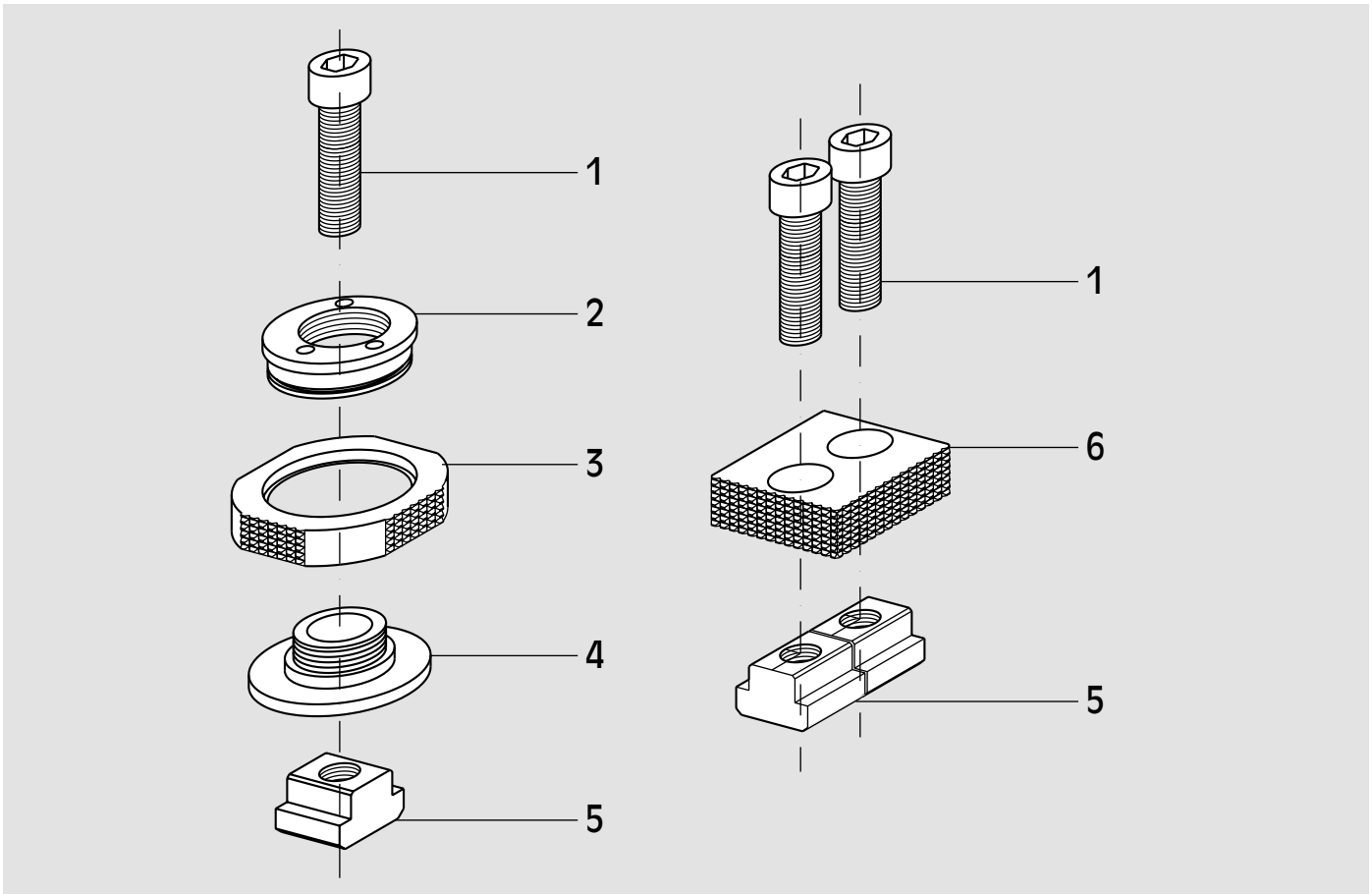
## Eccentric self-locking clamping device



Set Cam SYSTEM "s" complete with:  
 N. 4 CAM SYSTEM "s"  
 N. 4 fixed block CAM SYSTEM "s"  
 N. 6 pair of T-nuts with screw  
 N. 1 Key for CAM SYSTEM "s"  
 wooden packing case



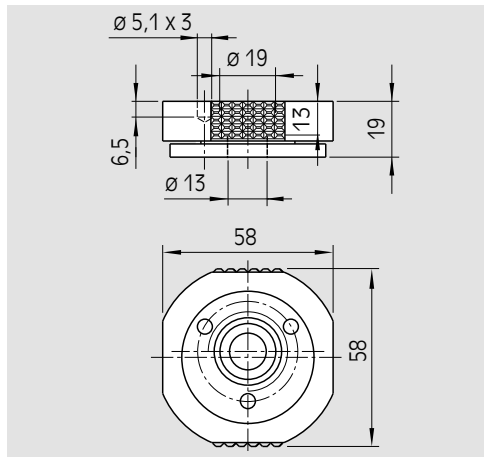
Id. No.	T mm
77584314	14
77584316	16
77584318	18
77584320	20
77584322	22



### Description

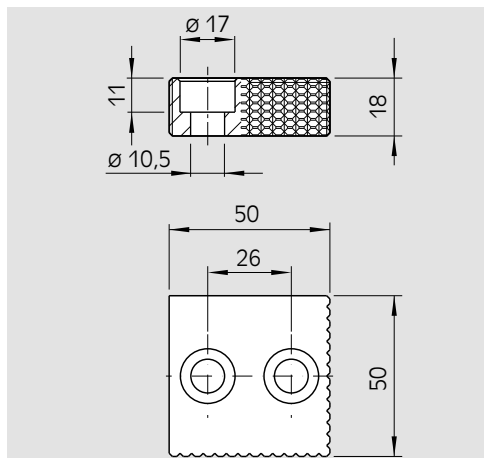
01	Screw	03	Clamping element	05	T-nuts
02	Eccentric element	04	Central element	06	Fixed block





CAM SYSTEM "s"  
single

**Id. No.**  
58435000



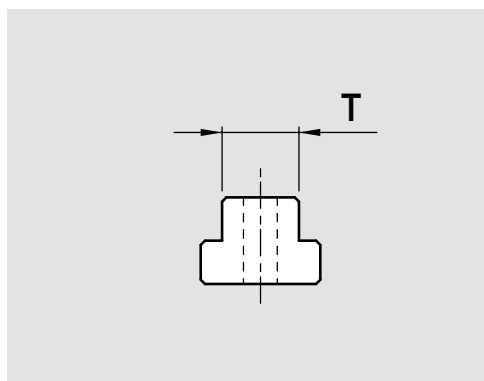
Fixed block  
CAM SYSTEM "s"

**Id. No.**  
58430400



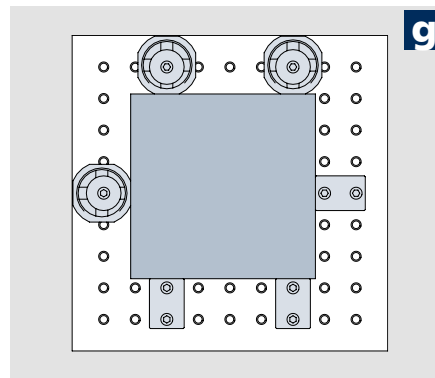
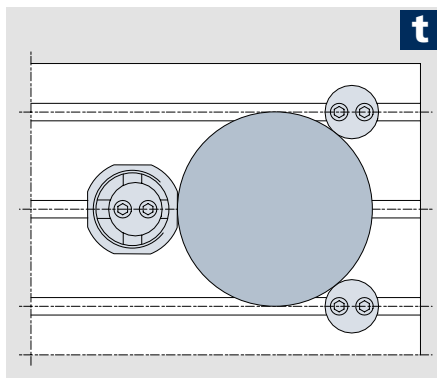
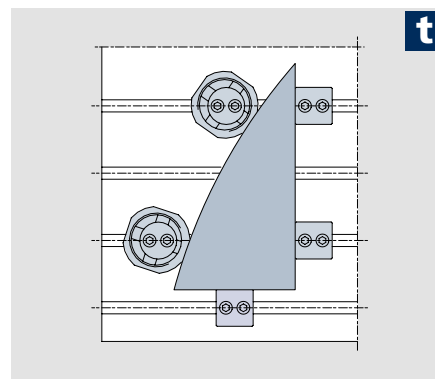
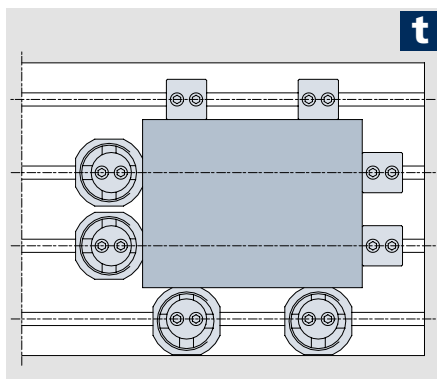
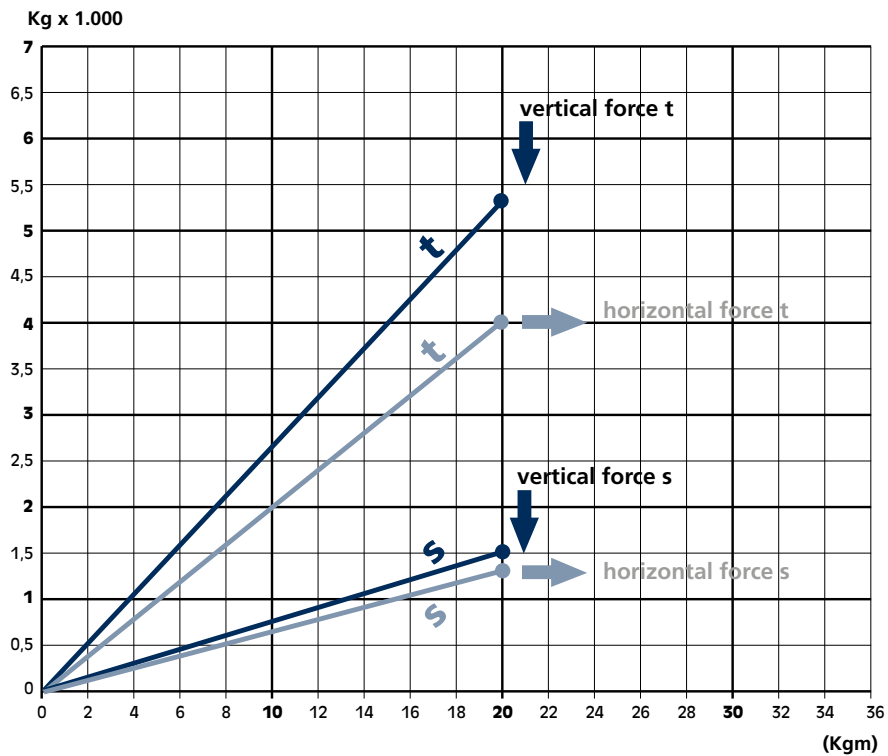
Key for  
CAM SYSTEM "s"

**Id. No.**  
58430800



Pair of T-nuts  
with screw  
CAM SYSTEM "s"

Id. No.	T mm
58432593	14
58432594	16
58432595	18
58432596	20
58432597	22



**S**

Id. No.	T mm
77584414	14
77584416	16
77584418	18
77584420	20
77584422	22

