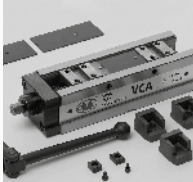




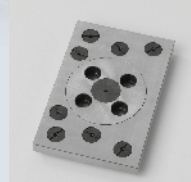
5-Axis Machine Tools



VCA

- VCA 100
- VCA 130
- VCA 160

Page 5.4.2



VCA

- Spare parts

Page 5.4.8



VCA

- Accessories

Page 5.4.4



VCA

- Application examples

Page 5.4.13



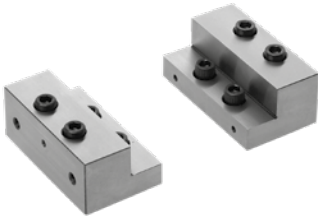
Self-centering set base VCA

Set base Vise Power complete with:
wrench
cover for the protection of the screw
2 positioning keys with screw
4 clamps

| Type for | Id. No. |
|----------|----------|
| VCA 100 | 77589070 |
| VCA 130 | 77589170 |
| VCA 160 | 77589270 |

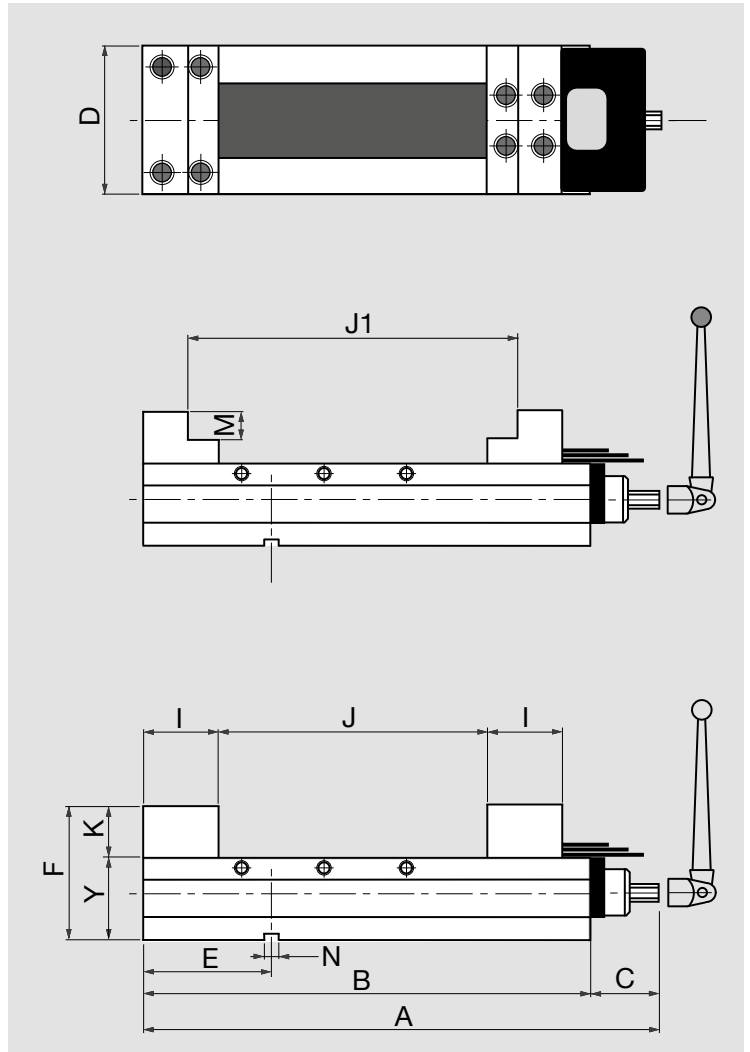
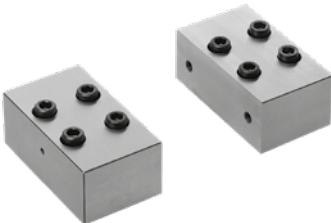
"L" jaw kit

| Type for | Id. No. |
|----------|----------|
| VCA 100 | 58907120 |
| VCA 130 | 58917120 |
| VCA 160 | 58927120 |



Square block jaw kit

| Type for | Id. No. |
|----------|----------|
| VCA 100 | 58907220 |
| VCA 130 | 58917220 |
| VCA 160 | 58927220 |



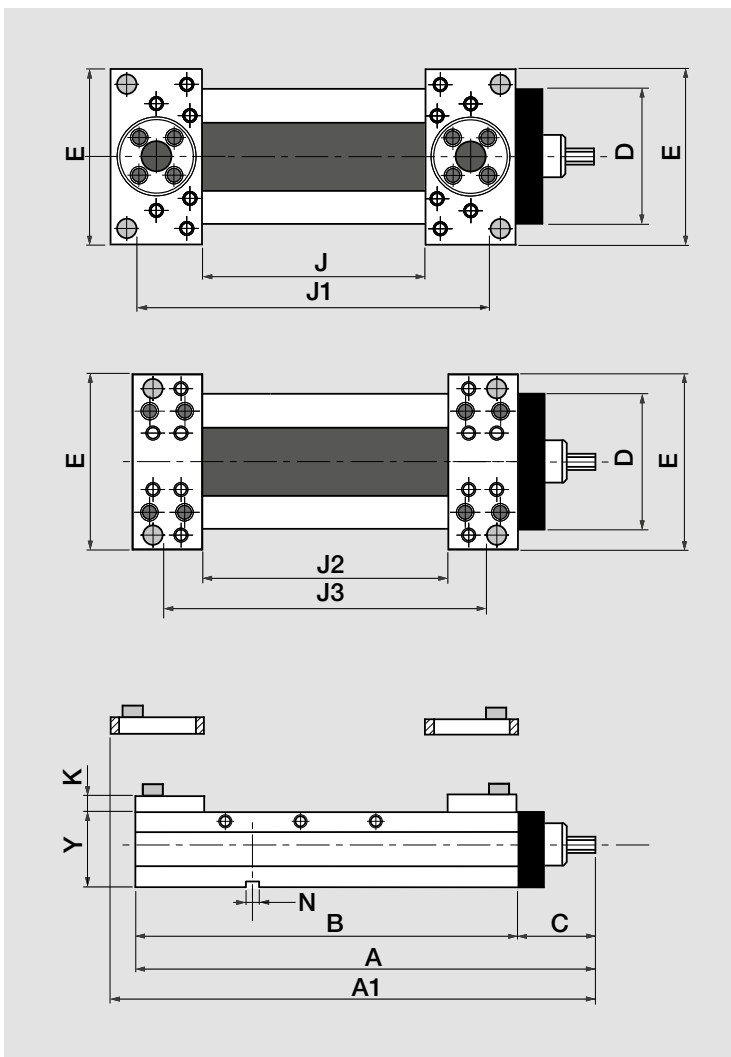
| Type | A mm | B mm | C mm | D mm | E mm | F mm | J mm | | J1 mm | | I mm | K mm | M mm | N mm | X mm | Y mm | Max clamping force KN (kgf) | Weight Kg |
|---------|------|------|------|------|-------|------|------|-----|-------|-----|------|------|------|------|------|------|-----------------------------|-----------|
| | | | | | | | min | max | min | max | | | | | | | | |
| VCA 100 | 378 | 300 | | 101 | 150 | 130 | 40 | 165 | 40 | 220 | 64 | 45 | 25 | | 45 | 85 | 20 (2.000) | 22 |
| VCA 130 | 488 | 410 | 78 | 131 | 205 | 147 | 40 | 250 | 40 | 320 | 74 | 52 | 30 | 18 | 65 | 95 | 23 (2.300) | 40 |
| VCA 160 | 553 | 475 | | 161 | 237,5 | 160 | 40 | 290 | 40 | 370 | 86 | 55 | 30 | | 65 | 105 | 24 (2.400) | 60 |

Self-centering set base VCA

Set base Vise Power complete with:
 wrench
 cover for the protection of the screw
 2 positioning keys with screw
 4 clamps



| Type for | Id. No. |
|----------|----------|
| VCA 100 | 77589070 |
| VCA 130 | 77589170 |
| VCA 160 | 77589270 |



Gripper jaw kit

| Type for | Id. No. |
|----------|----------|
| VCA 100 | 58907330 |
| VCA 130 | 58917330 |
| VCA 160 | 58927330 |



Floating gripper jaw kit

| Type for | Id. No. |
|----------|----------|
| VCA 100 | 58907340 |
| VCA 130 | 58917340 |
| VCA 160 | 58927340 |

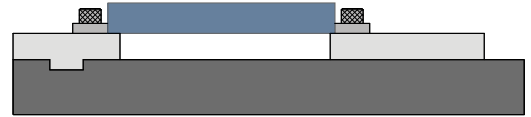


| Type | A mm | A1 mm | B mm | C mm | D mm | E mm | J mm | | J1 mm | J2 mm | | J3 mm | K mm | N mm | Y mm | Max clamping force KN (kgf) | Weight Kg |
|---------|------|-------|------|------|------|------|------|-----|-------|-------|-----|-------|------|------|------|-----------------------------|-----------|
| | | | | | | | min | max | | min | max | | | | | | |
| VCA 100 | 378 | 397 | 300 | | 101 | 160 | 5 | 122 | 270 | 40 | 170 | 230 | | 18 | 85 | 20 (2.000) | 19 |
| VCA 130 | 488 | 513 | 410 | 78 | 131 | 190 | 5 | 205 | 377 | 30 | 255 | 340 | 22 | 18 | 95 | 23 (2.300) | 34 |
| VCA 160 | 553 | 584 | 475 | | 161 | 220 | 11 | 230 | 450 | 40 | 295 | 390 | | | 105 | 24 (2.400) | 53 |



Set of 4 grippers h11 smooth

Id. No.
58906114



Set of 4 grippers h11 serrated

Id. No.
58906124



Set of 4 grippers h19 smooth

Id. No.
58906214



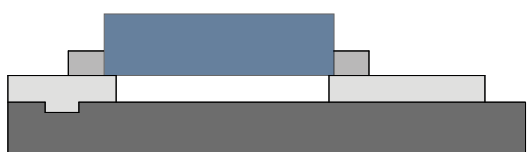
Set of 4 grippers h19 serrated

Id. No.
58906224



Set of 4 grippers h24 smooth

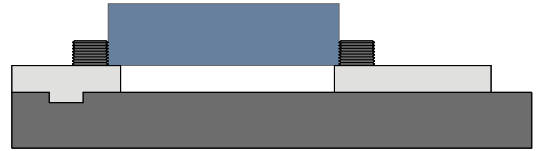
Id. No.
58906314





Set of 4 grippers h24 serrated

Id. No.
58906324



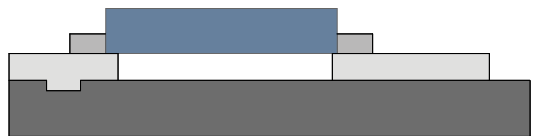
Set of 4 grippers h11 smooth-serrated

Id. No.
58906414



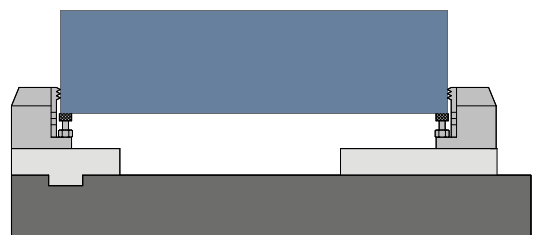
Set of 4 soft grippers h25 smooth

Id. No.
58906514



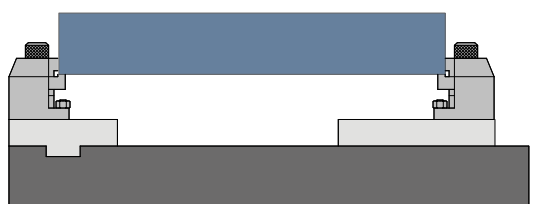
Set of 4 grippers h50 serrated with adjustable screw

Id. No.
58906724



Set of 4 grippers h50 smooth with step

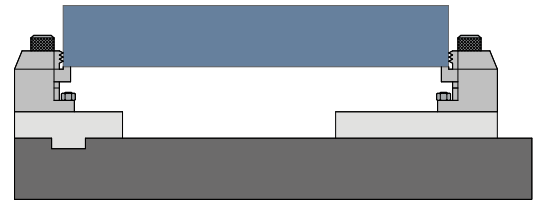
Id. No.
58906814





Set of 4 grippers h50 serrated with step

Id. No.
58906824



Set of 4 grippers h25 smooth with adjustable screw

Id. No.
58906614



Set of 4 grippers h25 serrated with adjustable screw

Id. No.
58906624

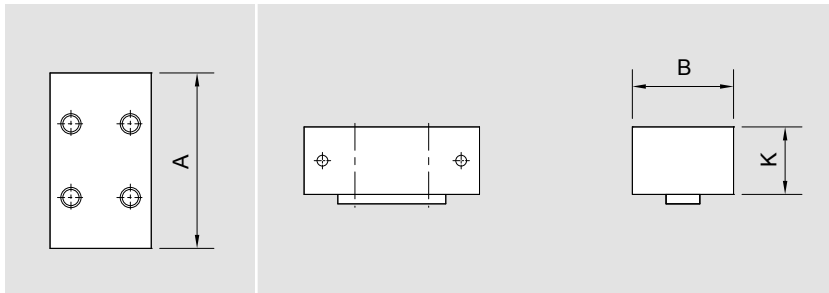


Set of 4 grippers h50 smooth with adjustable screw

Id. No.
58906714

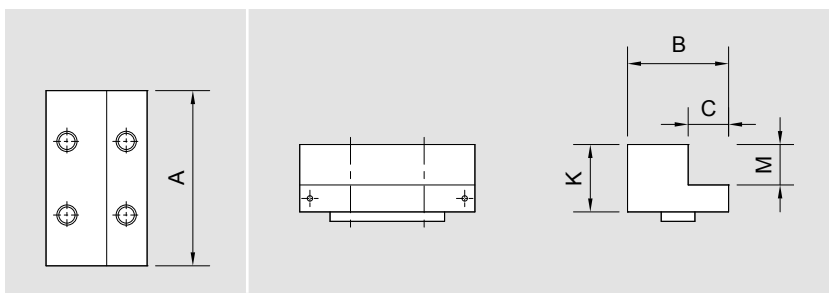


Moveable square block jaw (with expanding chip cover)



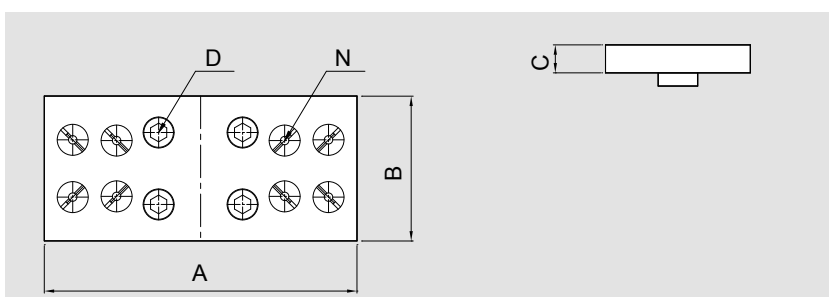
| Id. No. | Type | A mm | B mm | K mm | Weight Kg |
|----------|------|------|------|------|-----------|
| 58900320 | 100 | 100 | 64 | 45 | 2,5 |
| 58910320 | 130 | 130 | 74 | 52 | 4,5 |
| 58920320 | 160 | 160 | 86 | 55 | 6 |

Moveable jaw "L" type (with expanding chip cover)



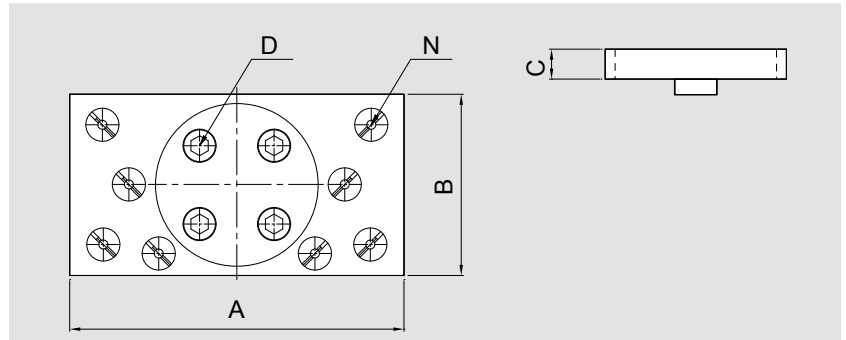
| Id. No. | Type | A mm | B mm | C mm | K mm | M mm | Weight Kg |
|----------|------|------|------|------|------|------|-----------|
| 58900310 | 100 | 100 | 64 | 26 | 45 | 25 | 1,5 |
| 58910310 | 130 | 130 | 74 | 30 | 52 | 30 | 2,8 |
| 58920310 | 160 | 160 | 86 | 35 | 55 | 30 | 4,2 |

Moveable jaw gripper



| Id. No. | Type | A mm | B mm | C mm | D mm | N | Weight Kg |
|----------|------|------|------|------|---------|---|-----------|
| 58900330 | 100 | 160 | 64 | 22 | M10x25L | 6 | 1,4 |
| 58910330 | 130 | 190 | 88 | 22 | M12x30L | 8 | 2,2 |
| 58920330 | 160 | 220 | 88 | 22 | M14x30L | 8 | 3,3 |

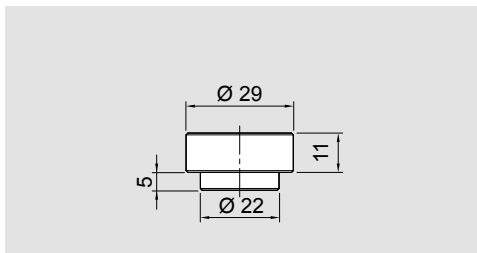
Floating jaw gripper



| Id. No. | Type | A mm | B mm | C mm | D mm | N | Weight Kg |
|----------|---------|------|------|------|---------|---|-----------|
| 58900340 | VCP 100 | 160 | 88 | 22 | M10x25L | 6 | 2,2 |
| 58910340 | VCP 130 | 190 | 103 | 22 | M12x30L | 8 | 3,2 |
| 58920340 | VCP 160 | 220 | 128 | 22 | M14x30L | 8 | 5,7 |

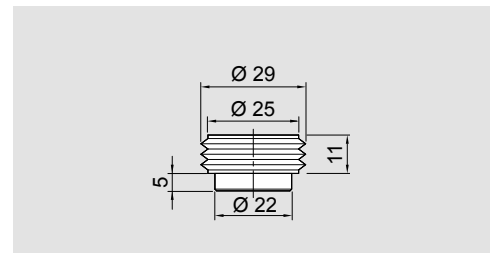
Gripper h11 smooth

Id. No.
58906110



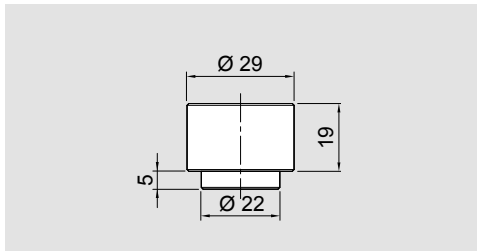
Gripper h11 serrated

Id. No.
58906120



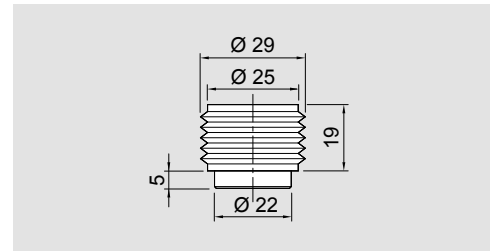
Gripper h19 smooth

Id. No.
58906210



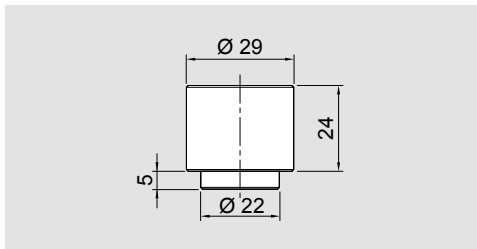
Gripper h19 serrated

Id. No.
58906220



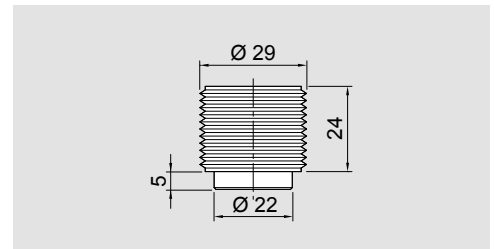
Gripper h24 smooth

Id. No.
58906310



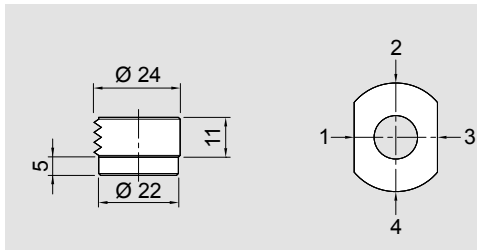
Gripper h24 serrated

Id. No.
58906320



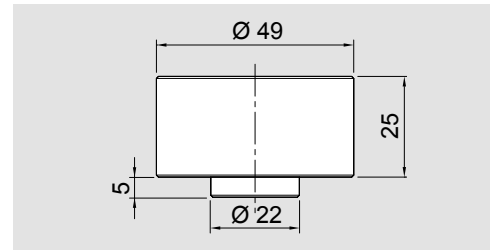
Gripper h11 smooth-serrated

Id. No.
58906410



Soft gripper h25 smooth

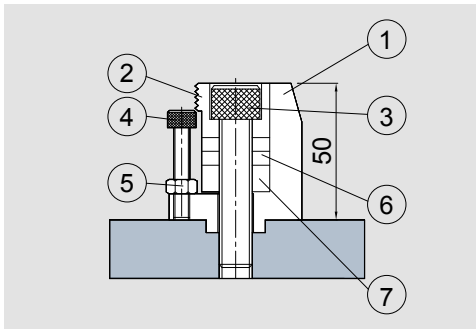
Id. No.
58906510



Gripper h50 serrated with adjustable screw

Id. No.

58906720



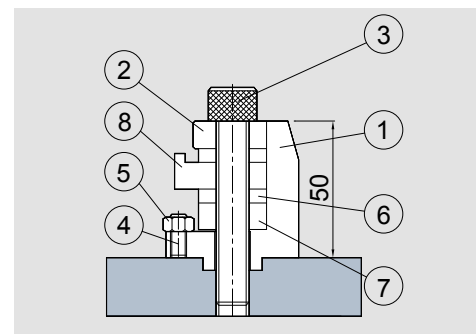
| Pos. | Id. No. | Description |
|------|----------|------------------------|
| 1 | 58905120 | Body |
| 2 | 58905220 | Serrated gripper |
| 3 | 71113109 | Screw TCEI M12x60 12.9 |
| 4 | 71113047 | Screw TCEI M6x30 12.9 |
| 5 | 71150206 | Nut M6 |
| 6 | 58905410 | Washer (5 mm) |
| 7 | 58905420 | Washer (10 mm) |



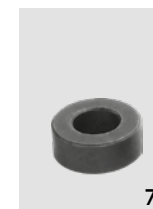
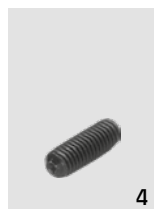
Gripper h50 smooth with step

Id. No.

58906810



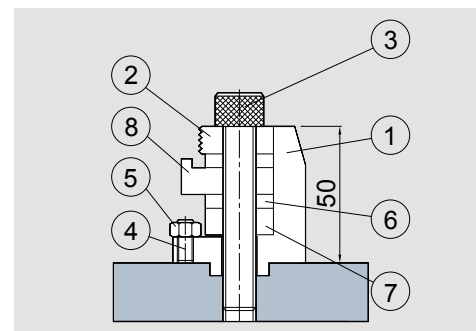
| Pos. | Id. No. | Description |
|------|----------|------------------------|
| 1 | 58905120 | Body |
| 2 | 58905310 | Smooth gripper |
| 3 | 71113110 | Screw TCEI M12x70 12.9 |
| 4 | 71112124 | Grub screw M6x16 |
| 5 | 71150206 | Nut M6 |
| 6 | 58905410 | Washer (5 mm) |
| 7 | 58905420 | Washer (10 mm) |
| 8 | 58905510 | Step washer |



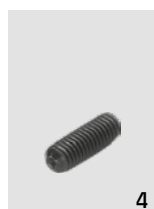
Gripper h50 serrated with step

Id. No.

58906820

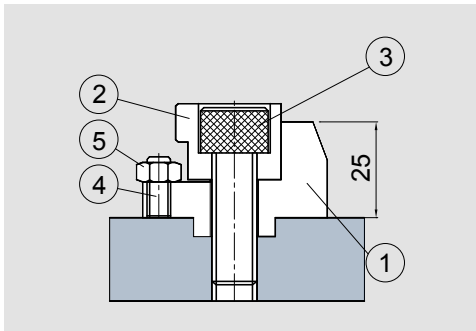


| Pos. | Id. No. | Description |
|------|----------|------------------------|
| 1 | 58905120 | Body |
| 2 | 58905320 | Serrated gripper |
| 3 | 71113110 | Screw TCEI M12x70 12.9 |
| 4 | 71112124 | Grub screw M6x16 |
| 5 | 71150206 | Nut M6 |
| 6 | 58905410 | Washer (5 mm) |
| 7 | 58905420 | Washer (10 mm) |
| 8 | 58905510 | Step washer |

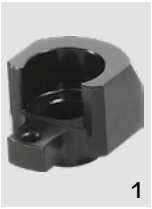


Gripper h25 smooth with adjustable screw

| Id. No. |
|----------|
| 58906610 |

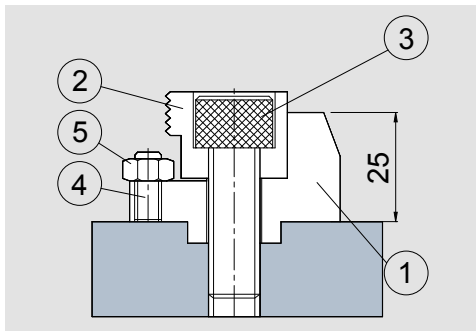


| Pos. | Id. No. | Description |
|------|----------|------------------------|
| 1 | 58905120 | Body |
| 2 | 58905210 | Smooth gripper |
| 3 | 71113105 | Screw TCEI M12x35 12.9 |
| 4 | 71112124 | Grub screw M6x16 |
| 5 | 71150206 | Nut M6 |

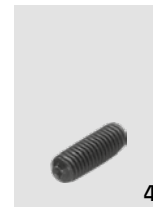


Gripper h25 serrated with adjustable screw

| Id. No. |
|----------|
| 58906620 |

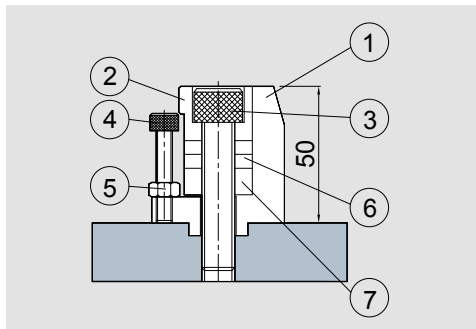


| Pos. | Id. No. | Description |
|------|----------|------------------------|
| 1 | 58905110 | Body |
| 2 | 58905220 | Serrated gripper |
| 3 | 71113105 | Screw TCEI M12x35 12.9 |
| 4 | 71112124 | Grub screw M6x16 |
| 5 | 71150206 | Nut M6 |



Gripper h50 smooth with adjustable screw

| Id. No. |
|----------|
| 58906710 |



| Pos. | Id. No. | Description |
|------|----------|------------------------|
| 1 | 58905120 | Body |
| 2 | 58905210 | Smooth gripper |
| 3 | 71113109 | Screw TCEI M12x60 12.9 |
| 4 | 71113047 | Screw TCEI M6x16 |
| 5 | 71150206 | Nut M6 |
| 6 | 58905410 | Washer (5 mm) |
| 7 | 58905420 | Washer (10 mm) |

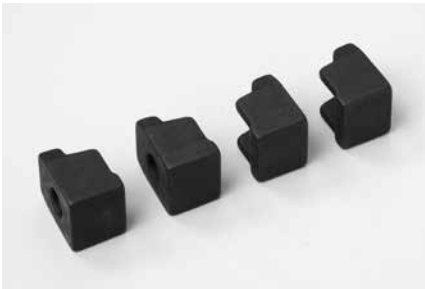


Pair of positioning keys



| Id. No. | mm |
|----------|---------|
| 58901392 | 18 x 12 |
| 58901393 | 18 x 14 |
| 58901394 | 18 x 16 |
| 58901395 | 18 x 18 |
| 58901396 | 18 x 20 |
| 58901397 | 18 x 22 |

Kit of 4 clamps



| Id. No. | for type |
|----------|------------------|
| 58902709 | VCP 100 - VP 100 |
| | VCP 130 - VP 130 |
| | VCP 160 - VP 160 |

Wrench VCM/VCA



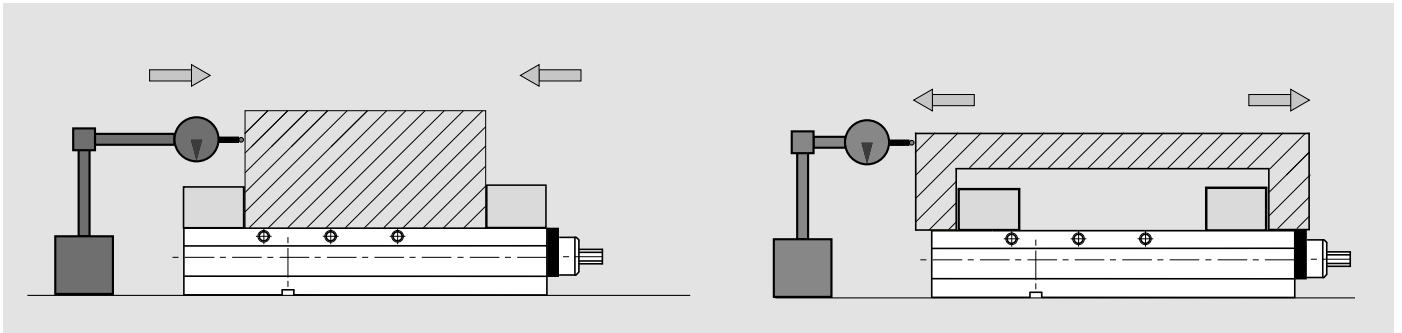
| Id. No. | for type |
|----------|-------------------|
| 58901910 | VCM 100 - VCA 100 |
| | VCM 130 - VCA 130 |
| | VCM 160 - VCA 160 |

Torque wrench

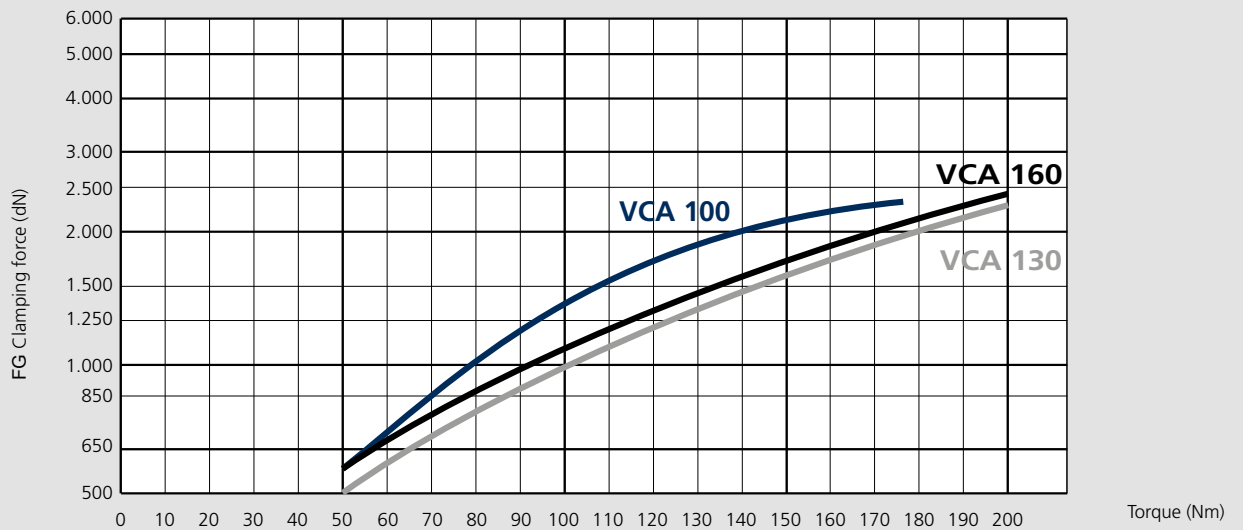


| Id. No. | for type |
|----------|-------------------|
| 51501010 | VCM 100 - VCA 100 |
| | VCM 130 - VCA 130 |
| | VCM 160 - VCA 160 |

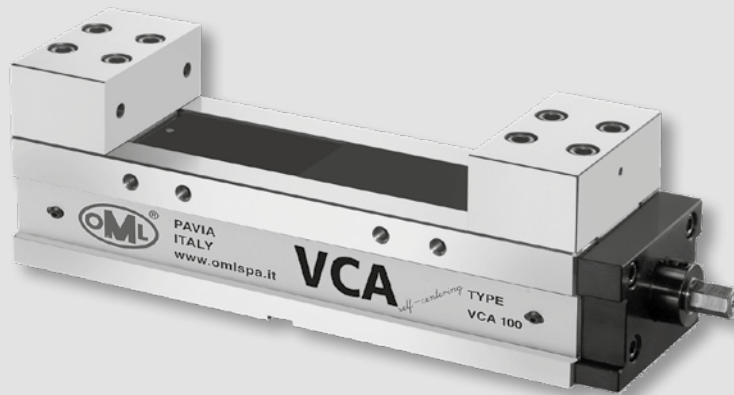
Repeatability accuracy for the clamping of model VCA $\pm 0,01$



Clamping force diagrams VCA without clamping force multiplier



Possible configurations of vices "SELF CENTERING"



With block jaws



With L jaws



With gripper jaws



With floating gripper jaws

5-Axis Machine Tools

