

Modular clamping equipment



MC
Modular clamping equipment

Page 3.1.3



MC base with fixed support with jaw
Clamping moduls

Page 3.1.7



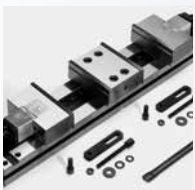
MC-XL
Modular clamping equipment

Page 3.1.4



MC base with double fixed support with jaw
Clamping moduls

Page 3.1.7



DCS-MC
Double clamping equipment

Page 3.1.5



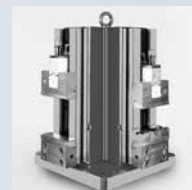
MVS-MC
Modular vertical clamping system

Page 3.1.8



MC extension element
Clamping moduls

Page 3.1.6



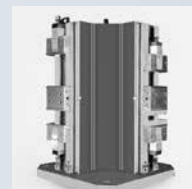
VCS-MC
Modular vertical clamping system

Page 3.1.10



MC complete extension element
Clamping moduls

Page 3.1.6



DVCS-MC
Modular vertical double clamping system

Page 3.1.11



Supporto a doppia ganascia fissa MC
Moduli di bloccaggio

Page 3.1.6



MC
Accessories and spare parts

Page 3.1.13

MC is ...

MODULAR

We use the true definition of the term modular; product which is composed of separate or separable elements. With these separate or separable elements we can achieve many different clamping solutions.

The only different component of these clamping solutions is the base.

The base length determines the clamping capacity while all other components remain the same.

Fixed and movable vise jaws can be used with any base configuration, offering the most flexible workholding solutions available.

This modular system allows the user to realize the maximum number of workholding combinations with the minimum investment in equipment.

DURABILITY

All components are constructed from oversize steel profiles ensuring the equipment is exceptionally sturdy and can provide the user with optimal performance.

Wear parts are special treated to achieve a surface hardness of 50/60 HRC.

All non-ground surfaces are burnished to protect against corrosion.

QUICK-CHANGE

A patented system allows quick repositioning of the clamping jaws.

The clamping jaw is lifted slightly from the base and shuttled to the next clamping position then lowered into place.

Part changeovers and size changes can be made quickly and easily.

SAFE

The jaws of the equipment have a descending movement of 0.2 mm, therefore, upon closing, they drag the piece against the support base of the same.

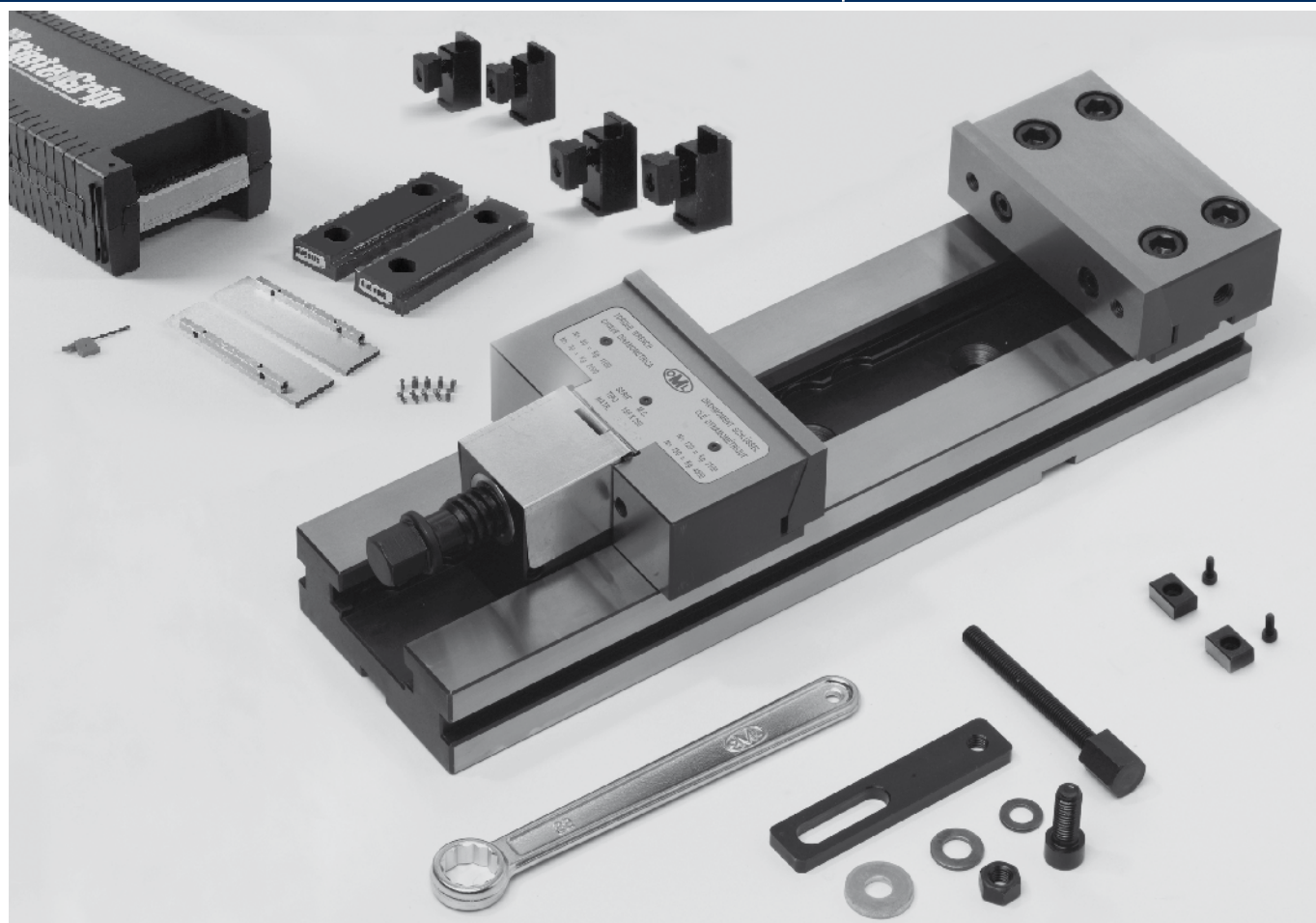
In addition to precision, this system guarantees the absence of vibrations as the adherence of the piece to the support surface is constantly maintained.

VERSATILITY

The standard CLAK system allows the quick-change of parallels, angular parallels, soft jaws and "V" jaws in order to machine any workpiece.

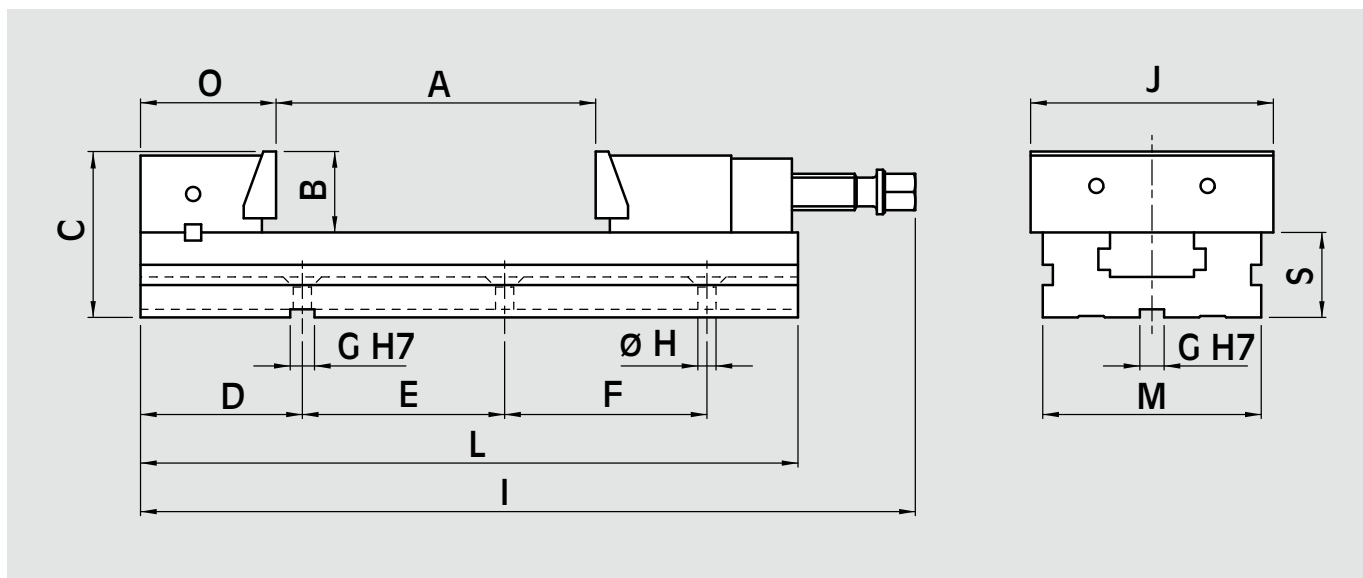
MANAGEABLE

The weight of 25 kg (55 lb.) for the 150 mm. x 200 mm. (6" x 8") vise and simple clamping system allow for easy movement from one machine tool to another.

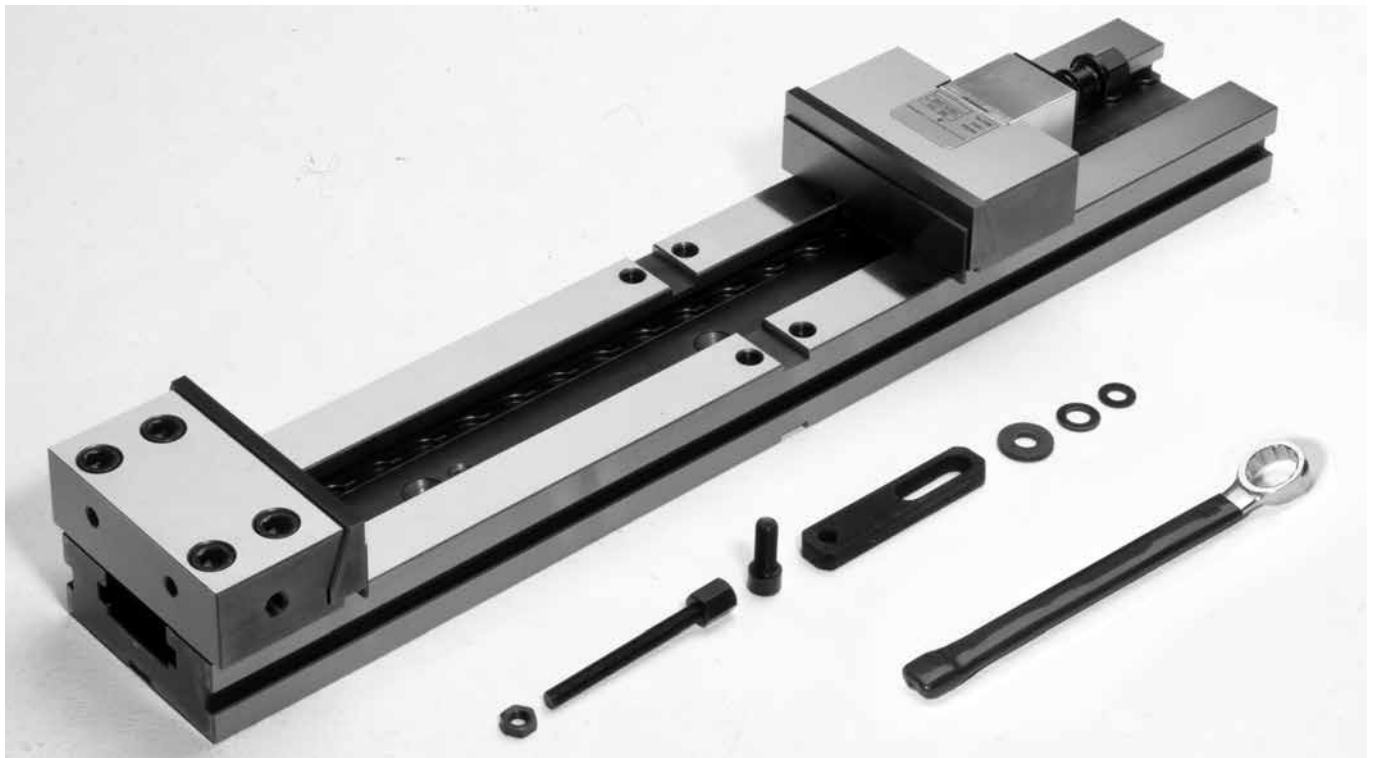


Clamping equipment **MC** complete with: wrench, rigid slide way (floating slide-way at request for raw workpiece), work stop, pair of positioning keys **h6**, cover for protection of the screw, 4 clamps, **pair of jaws without tungsten carbide coating**, **1 pair of parallels (PP)**, **1 wrench TORX T9** and **1 kit of 10 screws**, cardboard box. SinterGrip inserts **are not included**: ask to your local dealer.

NOTE: SinterGrip jaws see page S.15

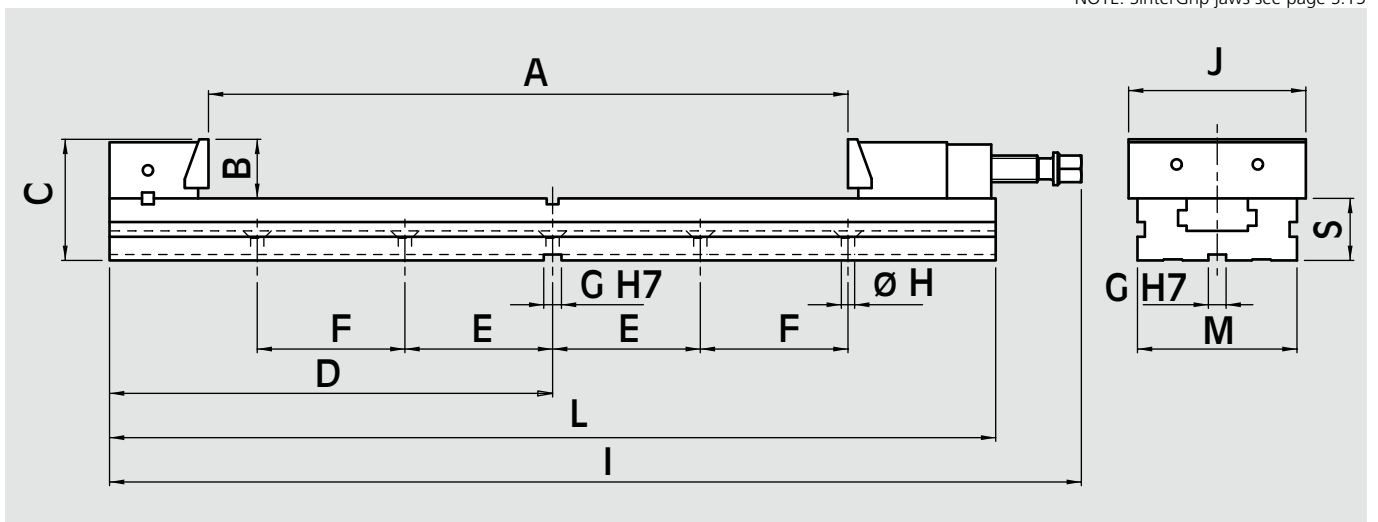


| Id. No. | Type | A | B | C | D | E | F | G | H | I | J | L | M | S | Weight |
|----------|--------------|-----|----|-----|-----|-----|-----|----|------|-----|-----|-----|-----|----|--------|
| 33580651 | MC 150 x 200 | mm | mm | mm | mm | mm | - | mm | mm | mm | mm | mm | mm | mm | Kg |
| 33580652 | MC 150 x 250 | 250 | 50 | 102 | 120 | 100 | 100 | 18 | 12,5 | 532 | 150 | 465 | 128 | 52 | 27,5 |
| 33580653 | MC 150 x 300 | 300 | 50 | 102 | 120 | 100 | 100 | 18 | 12,5 | 587 | 150 | 520 | 128 | 52 | 30,4 |
| 33580751 | MC 200 x 300 | 300 | 70 | 136 | 150 | 150 | 150 | 18 | 12,5 | 656 | 200 | 570 | 168 | 66 | 66,0 |
| 33580752 | MC 200 x 400 | 400 | 70 | 136 | 150 | 200 | 200 | 18 | 12,5 | 756 | 200 | 670 | 168 | 66 | 68,0 |

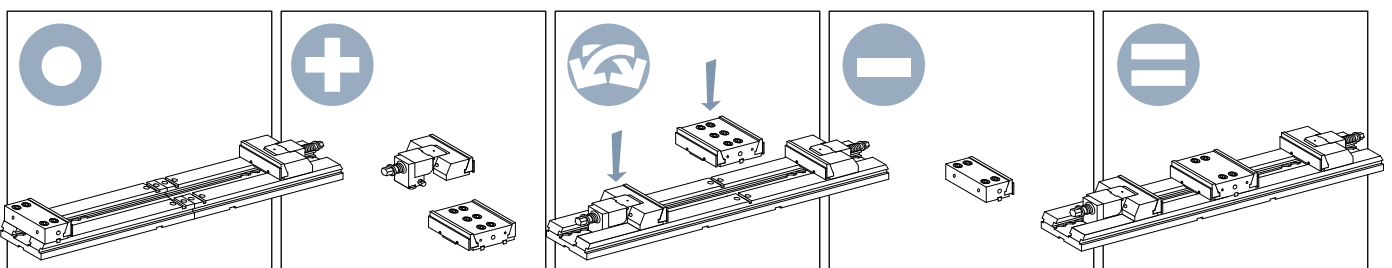


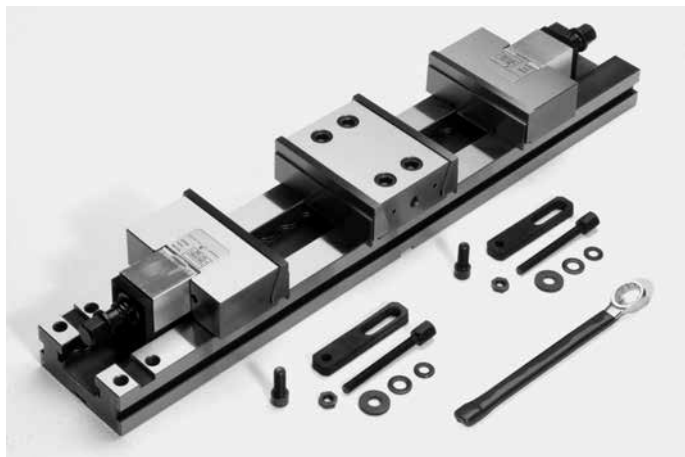
Clamping equipment MC-XL complete with wrench, work stop, rigid slide-way, (floating slide-way at request for raw workpiece), pair of positioning keys, pair of **CLAK** parallels, cover for protection of the screw, cardboard box.

NOTE: SinterGrip jaws see page S.15

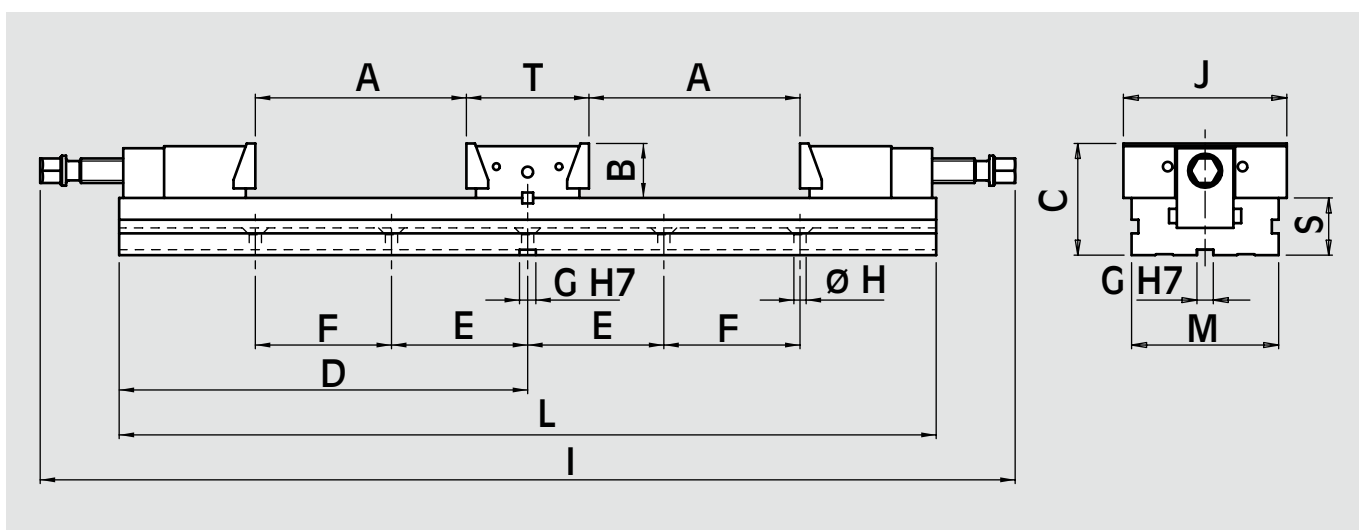


| Id. No. | for type | A mm | B mm | C mm | D mm | E mm | F mm | G mm | H mm | I mm | J mm | L mm | M mm | S mm | Weight kg |
|-------------|--------------|---------|---------|---------|---------|---------|---------|---------|---------|---------|---------|---------|---------|---------|--------------|
| 77 58 06 04 | MC 150 x 545 | 545 | 50 | 102 | 379 | 100 | 150 | 18 | 12,5 | 828 | 150 | 758 | 128 | 52 | 37 |
| 77 58 06 05 | MC 150 x 655 | 655 | 50 | 102 | 439 | 100 | 200 | 18 | 12,5 | 938 | 150 | 878 | 128 | 52 | 41 |



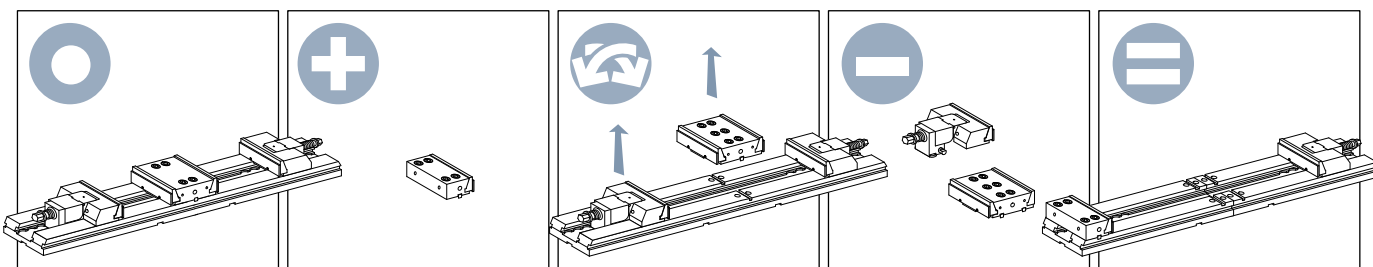


Double clamping equipment DCS-MC complete with:
 1 wrench,
 2 work stops,
 2 rigid slide-ways, (floating slide-way at request for raw workpiece),
 1 pair of positioning keys,
 2 pair of CLAK parallels,
 2 covers for protection of the screw,
 cardboard box.

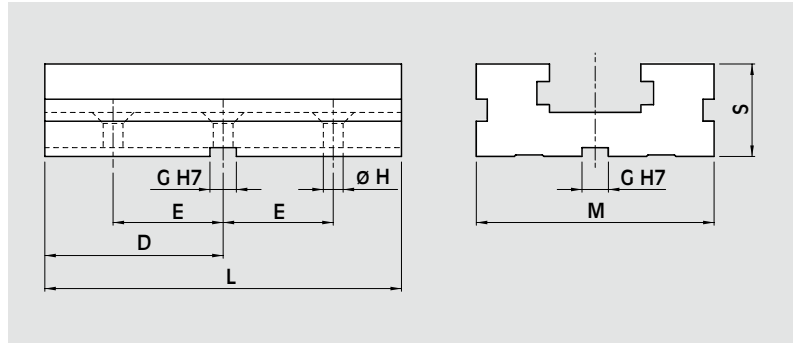


| Id. No. | for type | A mm | B mm | C mm | D mm | E mm | F mm | G mm | H mm | I mm | J mm | L mm | M mm | S mm | T mm | Weight kg |
|-------------|--------------|---------|---------|---------|---------|---------|---------|---------|---------|---------|---------|---------|---------|---------|---------|--------------|
| 77 58 16 01 | MC 150 x 200 | 200 | 50 | 102 | 379 | 100 | 150 | 18 | 12,5 | 897 | 150 | 758 | 128 | 52 | 103 | 44 |
| 77 58 16 02 | MC 150 x 250 | 250 | 50 | 102 | 439 | 100 | 200 | 18 | 12,5 | 997 | 150 | 878 | 128 | 52 | 103 | 48 |

The modularity of the system combined some other component offers many additional clamping solutions.

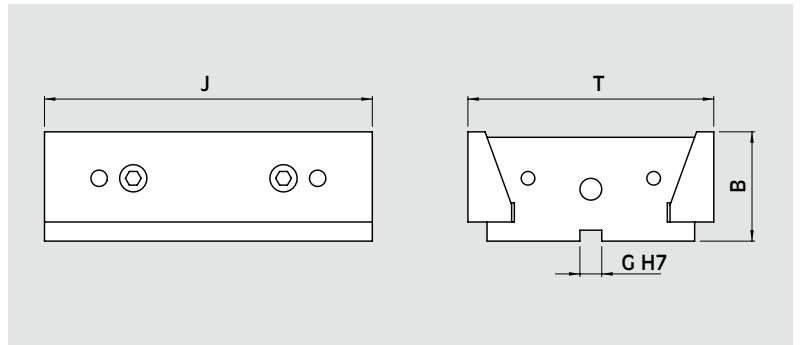
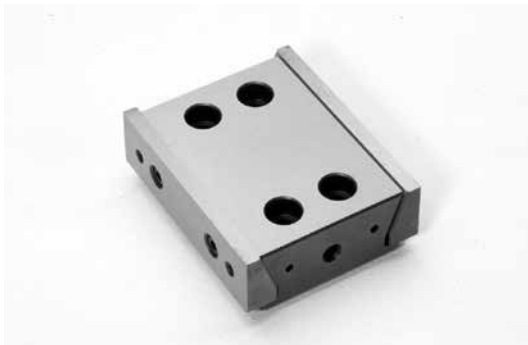


MC extension element with pair of positioning keys



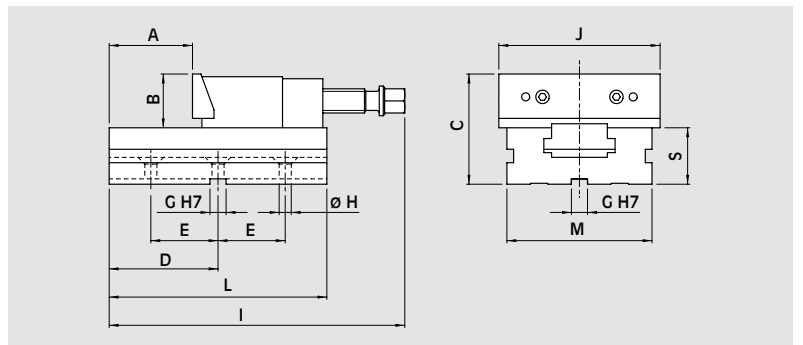
| Id. No. | for type | D mm | E mm | G mm | H mm | L mm | M mm | S mm | Weight kg |
|-------------|--------------|---------|---------|---------|---------|---------|---------|---------|--------------|
| 58 06 17 00 | MC 150 x ... | 114 | 75 | 18 | 12,5 | 228 | 128 | 52 | 8 |
| 58 07 17 00 | MC 200 x ... | 140 | 100 | 18 | 12,5 | 280 | 168 | 66 | 18 |

MC double fixed support with jaw



| Id. No. | for type | B mm | G mm | J mm | T mm | Weight kg |
|-------------|--------------|---------|---------|---------|---------|--------------|
| 58 16 72 10 | MC 150 x ... | 50 | 12 | 150 | 103 | 5 |
| 58 17 72 10 | MC 200 x ... | 70 | 18 | 200 | 140 | 15 |

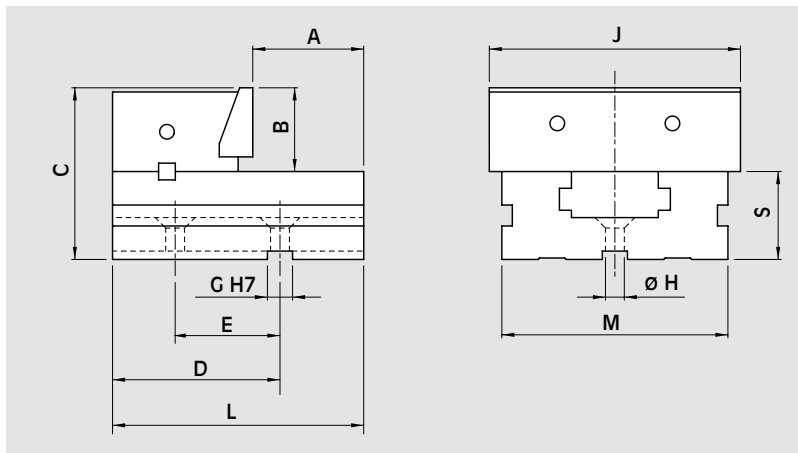
MC complete extension element with pair of positioning keys



| Id. No. | for type | A mm | B mm | C mm | D mm | E mm | G mm | H mm | I mm | J mm | L mm | M mm | S mm | Weight kg |
|-------------|----------|---------|---------|---------|---------|---------|---------|---------|---------|---------|---------|---------|---------|--------------|
| 58 06 71 10 | MC 150 | 100 | 50 | 102 | 114 | 75 | 18 | 12,5 | 295 | 150 | 228 | 128 | 52 | 14,5 |
| 58 07 71 10 | MC 200 | 120 | 70 | 136 | 140 | 100 | 18 | 12,5 | 370 | 200 | 280 | 168 | 66 | 34,5 |

MC base with fixed support with jaw

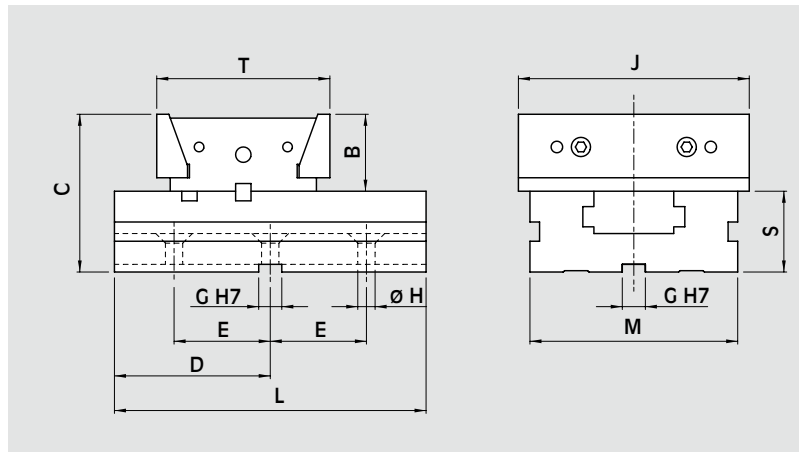
complete with pair of positioning keys



| Id. No. | for type | A mm | B mm | C mm | D mm | E mm | G mm | H mm | J mm | L mm | M mm | S mm | Weight kg |
|-------------|----------|---------|---------|---------|---------|---------|---------|---------|---------|---------|---------|---------|--------------|
| 58 06 70 10 | MC 150 | 85 | 50 | 102 | 120 | 75 | 18 | 12,5 | 150 | 170 | 128 | 52 | 9,5 |
| 58 07 70 10 | MC 200 | 96 | 70 | 136 | 150 | 100 | 18 | 12,5 | 200 | 205 | 168 | 66 | 22 |

MC base with double fixed support with jaw

complete with pair of positioning keys

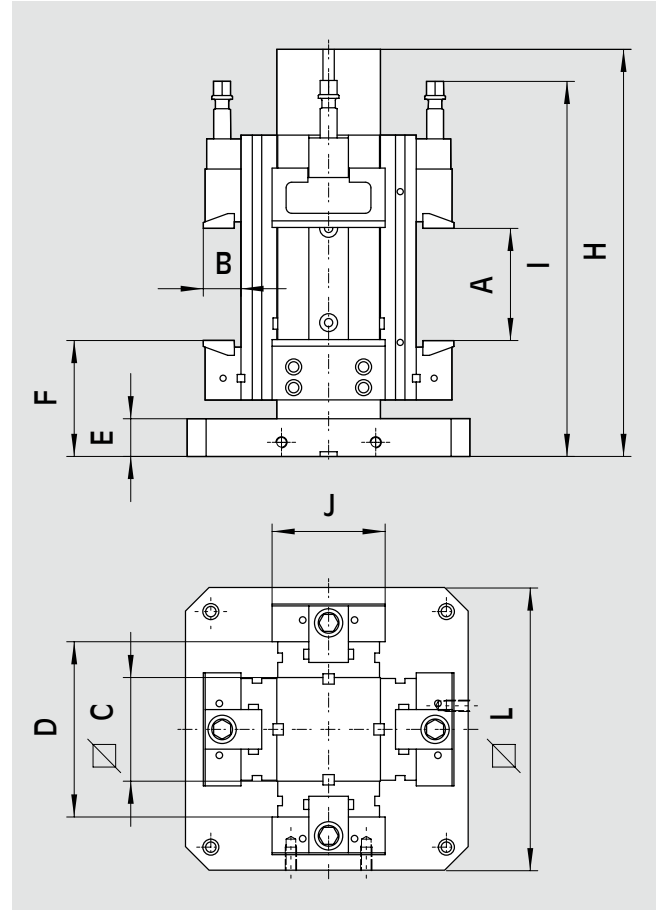


| Id. No. | for type | B mm | C mm | D mm | E mm | G mm | H mm | J mm | L mm | M mm | S mm | T mm | Weight kg |
|-------------|----------|---------|---------|---------|---------|---------|---------|---------|---------|---------|---------|---------|--------------|
| 58 16 70 10 | MC 150 | 50 | 102 | 100 | 75 | 18 | 12,5 | 150 | 200 | 128 | 52 | 103 | 13 |
| 58 17 70 10 | MC 200 | 70 | 136 | 125 | 100 | 18 | 12,5 | 200 | 250 | 168 | 66 | 140 | 40 |

Working example see page 2.17

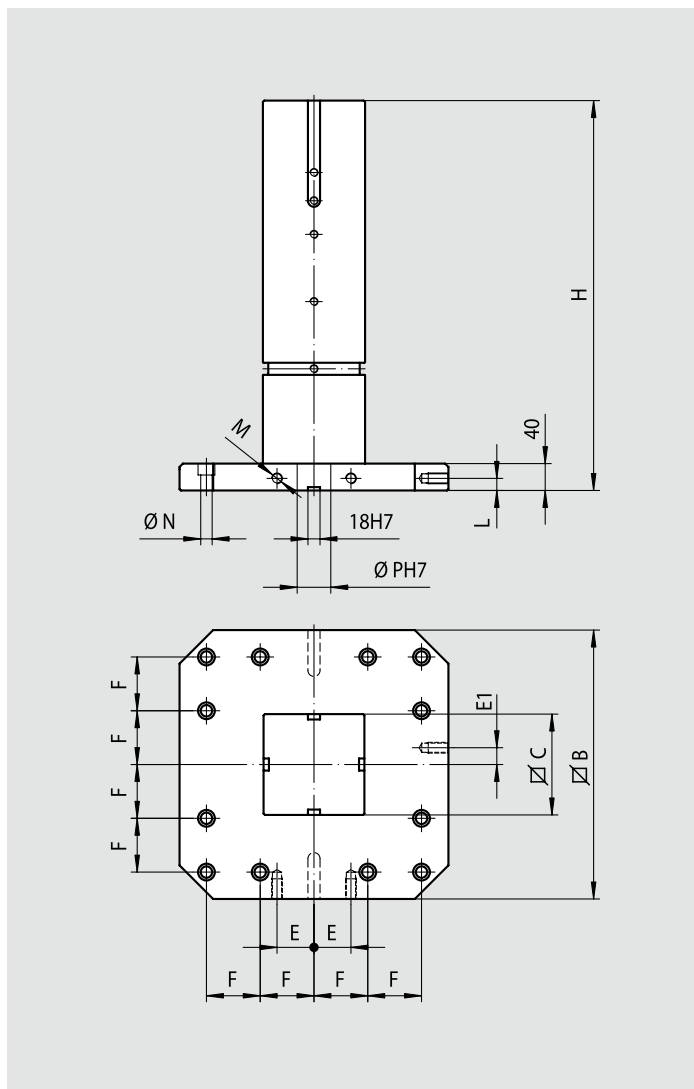
Vertical clamping system complete with:
 4 clamping equipment MC
 1 column
 1 base for vertical system MC
 4 pair of CLAK parallels
 4 covers for protection for the screws

4 rigid slide-ways (floating slide-ways on request for raw work pieces)
 4 work stops
 4 wrenches
 eye bolt for lifting,
 wooden packing case



| Id. No. | for type | A mm | B mm | C mm | D mm | E mm | F mm | H mm | I mm | J mm | L mm | Weight kg |
|-------------|--------------|---------|---------|---------|---------|---------|---------|---------|---------|---------|---------|--------------|
| 77 58 26 21 | MC 150 x 200 | 200 | 50 | 150 | 254 | 40 | 146 | 580 | 545 | 150 | 400 | 249 |
| 77 58 26 22 | MC 150 x 250 | 250 | 50 | 150 | 254 | 40 | 146 | 580 | 595 | 150 | 400 | 257 |
| 77 58 26 23 | MC 150 x 300 | 300 | 50 | 150 | 254 | 40 | 146 | 580 | 650 | 150 | 400 | 267 |
| 77 58 26 31 | MC 150 x 200 | 200 | 50 | 150 | 254 | 40 | 146 | 580 | 545 | 150 | 500 | 276 |
| 77 58 26 32 | MC 150 x 250 | 250 | 50 | 150 | 254 | 40 | 146 | 580 | 595 | 150 | 500 | 284 |
| 77 58 26 33 | MC 150 x 300 | 300 | 50 | 150 | 254 | 40 | 146 | 580 | 650 | 150 | 500 | 294 |
| 77 58 27 31 | MC 200 x 300 | 300 | 70 | 200 | 332 | 40 | 159 | 661 | 711 | 200 | 500 | 535 |

Working example see page 2.18



| Id. No. | for Type | B mm | C mm | E mm | E1 mm | F mm | H mm | L mm | M mm | N mm | P mm | Weight kg |
|-------------|----------|---------|---------|---------|----------|---------|---------|---------|---------|---------|---------|--------------|
| 58 22 80 20 | MC 150 | 400 | 150 | 55 | 25 | 80 | 580 | 18 | 16 | 17 | 50 | 142 |
| 58 22 80 30 | MC 150 | 500 | 150 | 75 | 25 | 100 | 580 | 18 | 16 | 17 | 50 | 169 |
| 58 23 80 30 | MC 200 | 500 | 200 | 75 | 25 | 100 | 661 | 18 | 16 | 17 | 50 | 266 |

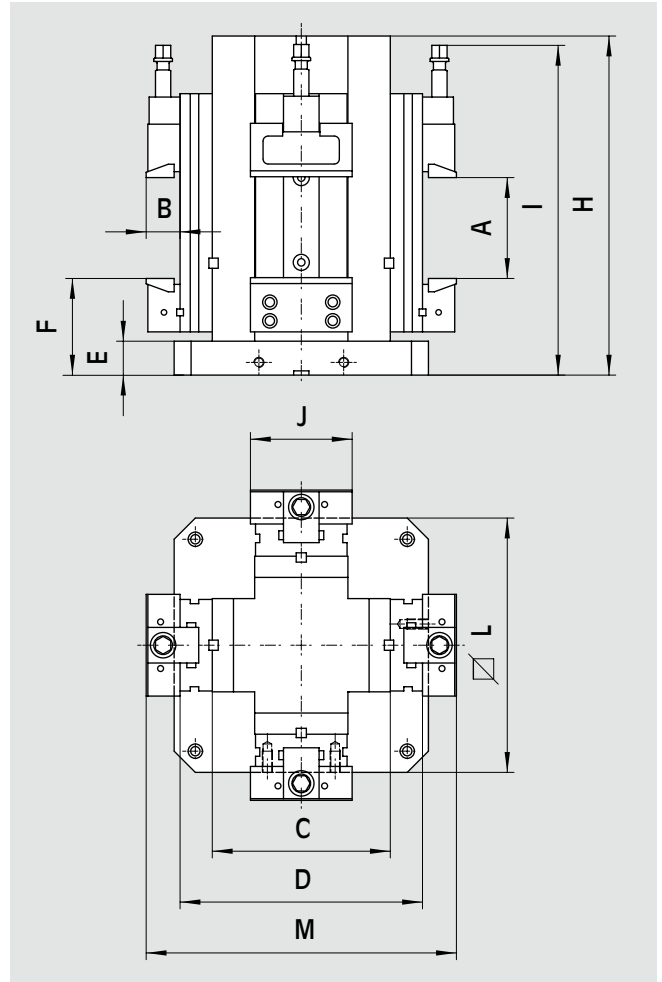


Insert for vertical use

| Id. No. | for type |
|-------------|--------------|
| 58 22 33 00 | VCS - MC 150 |
| 58 23 33 00 | VCS - MC 200 |

Cross Vertical clamping system complete with:
 4 clamping equipment MC
 1 cross cube
 4 pair of CLAK parallels
 4 covers for protection for the screws

4 guided slide-ways (floating slide-ways on request
 for raw workpieces)
 4 work stops
 4 wrenches
 eye bolt for lifting
 wooden packing case

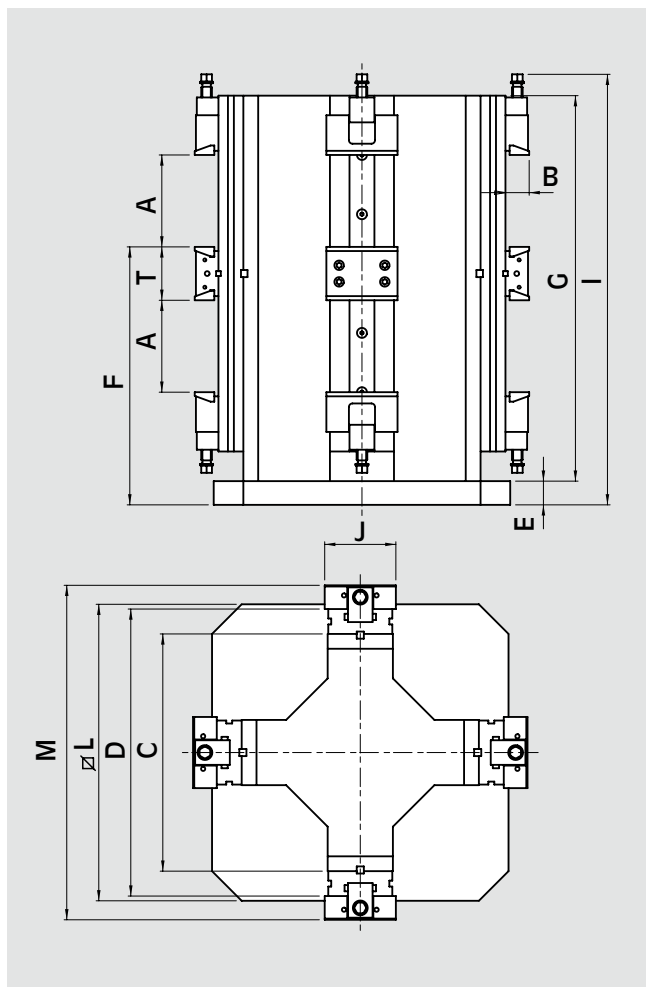


| Id. No. | for type | A mm | B mm | C mm | D mm | E mm | F mm | H mm | I mm | J mm | L mm | M mm | Weight kg |
|-------------|--------------|---------|---------|---------|---------|---------|---------|---------|---------|---------|---------|---------|--------------|
| 77 58 56 21 | MC 150 x 200 | 200 | 50 | 300 | 404 | 40 | 140 | 580 | 540 | 150 | 400 | 504 | 314 |
| 77 58 56 22 | MC 150 x 250 | 250 | 50 | 300 | 404 | 40 | 140 | 580 | 590 | 150 | 400 | 504 | 322 |
| 77 58 56 23 | MC 150 x 300 | 300 | 50 | 300 | 404 | 40 | 140 | 580 | 647 | 150 | 400 | 504 | 332 |
| 77 58 56 31 | MC 150 x 200 | 200 | 50 | 300 | 404 | 40 | 140 | 580 | 540 | 150 | 500 | 504 | 342 |
| 77 58 56 32 | MC 150 x 250 | 250 | 50 | 300 | 404 | 40 | 140 | 580 | 590 | 150 | 500 | 504 | 350 |
| 77 58 56 33 | MC 150 x 300 | 300 | 50 | 300 | 404 | 40 | 140 | 580 | 547 | 150 | 500 | 504 | 360 |
| 77 58 57 41 | MC 200 x 300 | 300 | 70 | 350 | 482 | 45 | 168 | 670 | 720 | 200 | 630 | 622 | 627 |

Working example see page 2.20

Vertical clamping system complete with:
 4 double clamping equipment MC
 1 cross cube XL
 8 pair of CLAK parallels
 8 covers for protection for the screws

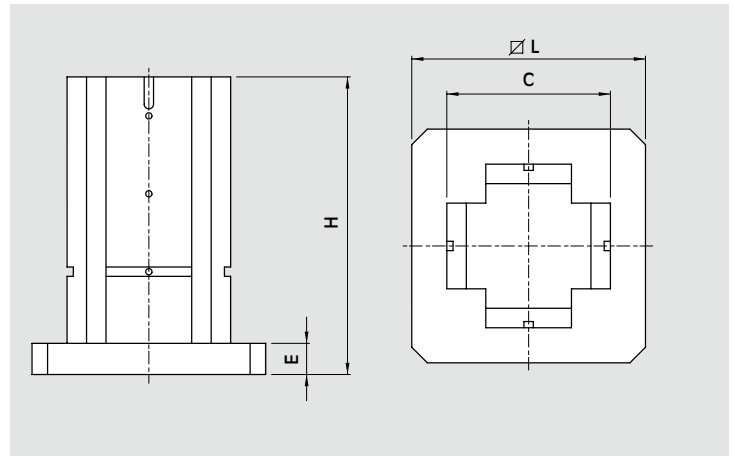
8 guided slide-ways (floating slide-ways on request for raw workpieces)
 8 work stops
 8 wrenches
 eye bolt for lifting
 wooden packing case



| Id. No. | for type | A | B | C | D | E | F | G | I | J | L | M | T | Weight |
|-------------|--------------------|-----|----|-----|-----|----|-----|-----|-----|-----|-----|-----|-----|--------|
| | | mm | mm | mm | mm | mm | mm | mm | mm | mm | mm | mm | mm | kg |
| 77 58 66 01 | DVCS -MC 150 x 200 | 200 | 50 | 550 | 654 | 45 | 515 | 795 | 890 | 150 | 630 | 754 | 103 | 680 |



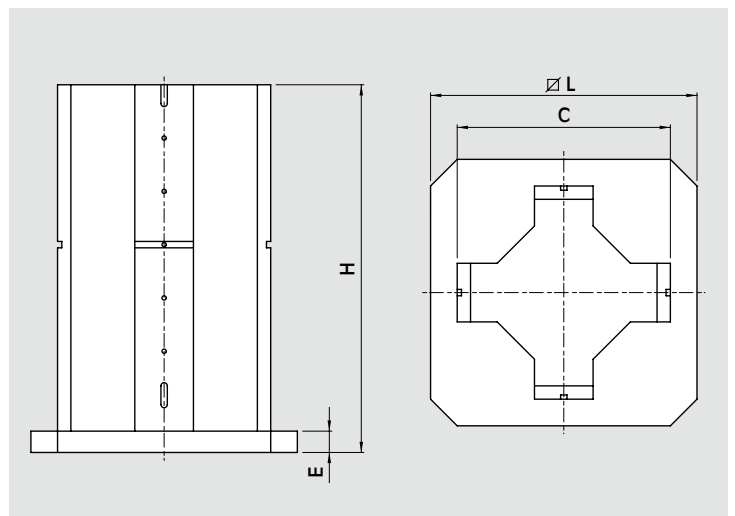
Cross cube for VCS-MC



| Id. No. | for type | C mm | E mm | H mm | L mm | Weight kg |
|-------------|----------|---------|---------|---------|---------|--------------|
| 58 52 80 20 | MC 150 | 300 | 40 | 580 | 400 | 212 |
| 58 52 80 30 | MC 150 | 300 | 40 | 580 | 500 | 240 |
| 58 53 80 40 | MC 200 | 350 | 45 | 670 | 630 | 363 |



Cross cube for DVCS-MC



| Id. No. | for type | C mm | E mm | H mm | L mm | Weight kg |
|-------------|-------------------|---------|---------|---------|---------|--------------|
| 58 62 80 00 | DVCS-MC 150 x ... | 550 | 45 | 840 | 630 | 475 |



Insert for vertical use

| Id. No. | for type |
|-------------|--------------|
| 58 22 33 00 | VCS - MC 150 |
| 58 23 33 00 | VCS - MC 200 |



Pair of grooved jaws

| Id. No. | for type |
|-------------|--------------|
| 58 06 44 09 | MC 150 x ... |
| 58 07 44 09 | MC 200 x ... |



Insert for vertical use (MVS, VCS, DVCS)

| Id. No. | for type |
|-------------|----------|
| 58 22 33 00 | MC 150 |
| 58 23 33 00 | MC 200 |



Torque wrench

| Id. No. | for type |
|-------------|--------------|
| 51 50 10 02 | MC 150 x ... |
| 51 50 10 03 | MC 200 x ... |



Air/oil block complete with cylinder and tang

| Id. No. | for type |
|-------------|--------------|
| 58 02 75 00 | MC 150 x ... |
| 58 03 75 00 | MC 200 x ... |



Air/oil foot pump

with joining pipe cm. 180 (71") and complete block for air/oil application

| Id. No. | for type |
|-------------|--------------|
| 77 58 02 51 | MC 150 x ... |
| 77 58 03 51 | MC 200 x ... |



Air/oil foot pump

| Id. Nr. | for type |
|-------------|--------------|
| 71 66 03 05 | MC 150 x ... |
| 71 66 03 05 | MC 200 x ... |



Air/oil manual pump

| Id. No. | for type | |
|-------------|--------------|--|
| 71 66 03 15 | MC 150 x ... | |
| 71 66 03 15 | MC 200 x ... | |



Pressure - gauge with graduated scale in Kg

| Id. No. | for type | |
|-------------|--------------|--|
| 51 43 12 51 | MC 150 x ... | |
| 51 43 12 51 | MC 200 x ... | |



Joining pipe M. 1,80 (71')

| Id. No. | for type | |
|-------------|--------------|--|
| 71 70 87 13 | MC 150 x ... | |
| 71 70 87 13 | MC 200 x ... | |



Joining pipe M. 3 (118'')

| Id. No. | for type | |
|-------------|--------------|--|
| 71 70 87 14 | MC 150 x ... | |
| 71 70 87 14 | MC 200 x ... | |

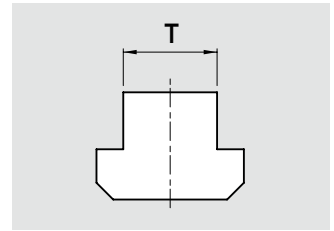


Joining pipe M. 6 (236'')

| Id. No. | for type | |
|-------------|--------------|--|
| 71 70 87 15 | MC 150 x ... | |
| 71 70 87 15 | MC 200 x ... | |



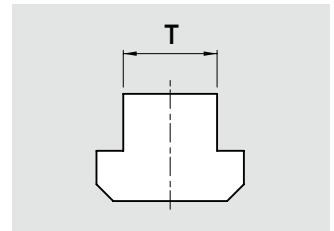
Pair of clamps
complete with screw and T nuts



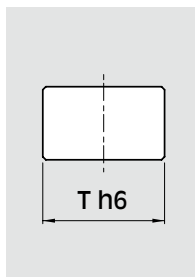
| Code for T-slots | | | | | | for type |
|------------------|-------------|-------------|-------------|-------------|-------------|--------------|
| mm 12 | mm 14 | mm 16 | mm 18 | mm 20 | mm 22 | |
| 58 02 27 92 | 58 02 27 93 | 58 02 27 94 | 58 02 27 95 | 58 02 27 96 | 58 02 27 97 | MC 150 x ... |
| 58 03 27 92 | 58 03 27 93 | 58 03 27 94 | 58 03 27 95 | 58 03 27 96 | 58 03 27 97 | MC 200 x ... |



Pair of nuts
complete with screws at 45°



| Code for T-slots | | | | | | for type |
|------------------|-------------|-------------|-------------|-------------|-------------|--------------|
| mm 12 | mm 14 | mm 16 | mm 18 | mm 20 | mm 22 | |
| 58 02 25 92 | 58 02 25 93 | 58 02 25 94 | 58 02 25 95 | 58 02 25 96 | 58 02 25 97 | MC 150 x ... |
| 58 03 25 92 | 58 03 25 93 | 58 03 25 94 | 58 03 25 95 | 58 03 25 96 | 58 03 25 97 | MC 200 x ... |

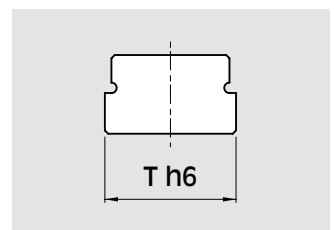


Pair of standard positioning key

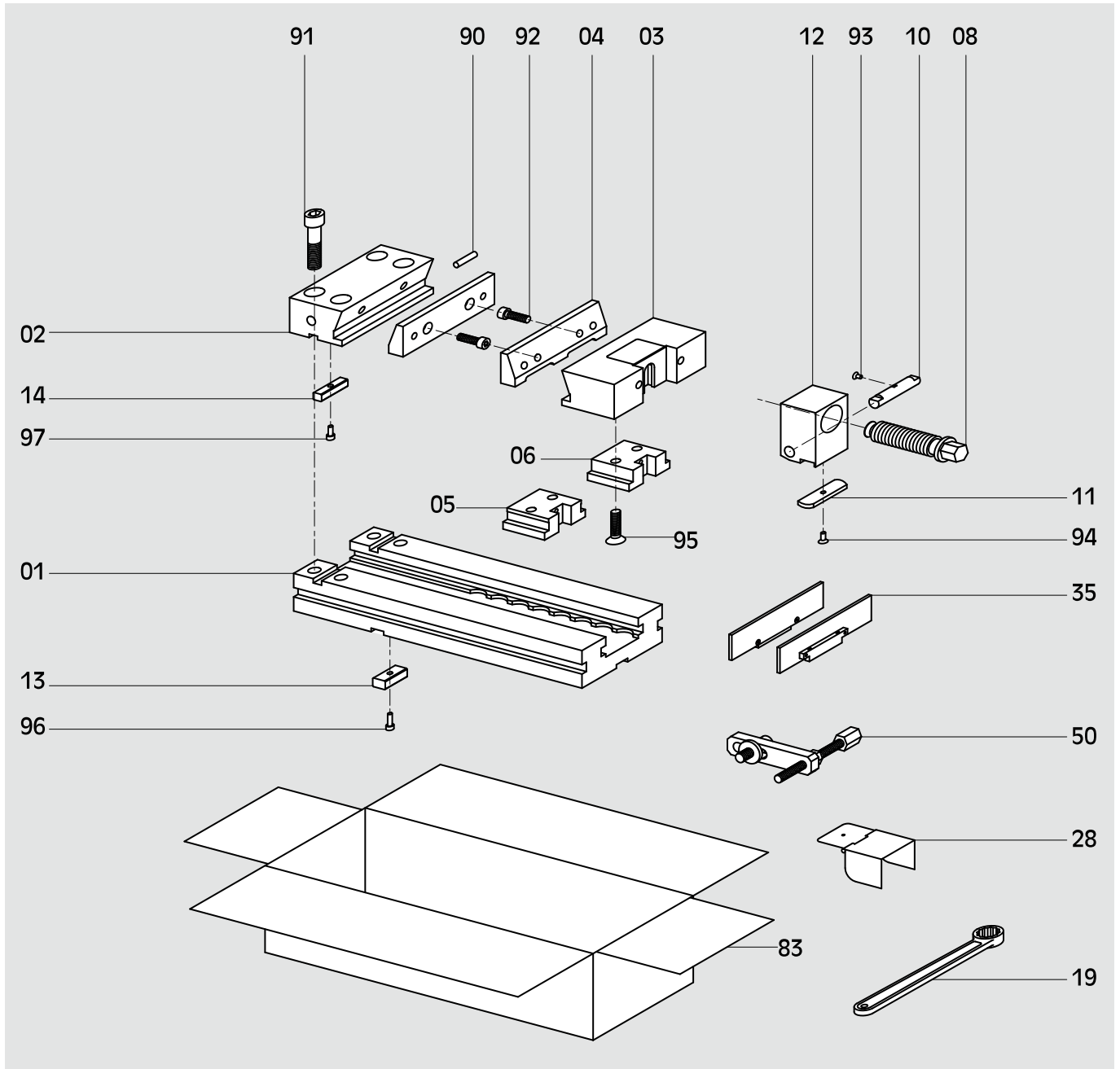
| Id. No. | for type | T h6 |
|-------------|--------------|------|
| | | mm |
| 58 02 13 95 | MC 150 x ... | 18 |
| 58 02 13 95 | MC 200 x ... | 18 |



Pair of positioning key
with special dimensions



| Code for T-slots | | | | | | for type |
|------------------|-------------|-------------|-------|-------------|-------------|--------------|
| mm 12 | mm 14 | mm 16 | mm 18 | mm 20 | mm 22 | |
| 58 02 13 92 | 58 02 13 93 | 58 02 13 94 | - | 58 02 13 96 | 58 02 13 97 | MC 150 x ... |
| 58 02 13 92 | 58 02 13 93 | 58 02 13 94 | - | 58 02 13 96 | 58 02 13 97 | MC 200 x ... |



Description

| | | |
|----------------------------|---|--------------------|
| 01..... Base | 12..... Block for clamping screw | 91..... Screw TCEI |
| 02..... Fixed support | 13..... Positioning key | 92..... Screw TCEI |
| 03..... Movable support | 14..... Key for support | 93..... Screw TPS |
| 04..... Jaw | 19..... Wrench | 94..... Screw TPS |
| 05..... Floating slide-way | 28..... Cover for protection of the screw | 95..... Screw TPS |
| 06..... Rigid slide-way | 35..... Pair of CLAK parallels | 96..... Screw TCEI |
| 08..... Clamping screw | 50..... Work stop | 97..... Screw TCEI |
| 10..... Contrast pin | 83..... Cardboard box | |
| 11..... Positioning plate | 90..... Rubber pad | |



Pair of smooth jaws

| Id. No. | for type | |
|-------------|--------------|--|
| 58 06 04 09 | MC 150 x ... | |
| 58 07 04 09 | MC 200 x ... | |



Fixed support with jaw

| Id. No. | for type | |
|-------------|--------------|--|
| 58 06 72 10 | MC 150 x ... | |
| 58 07 72 10 | MC 200 x ... | |



Movable support with jaw

| Id. No. | for type | |
|-------------|--------------|--|
| 58 06 73 10 | MC 150 x ... | |
| 58 07 73 10 | MC 200 x ... | |



Floating slide-way

| Id. No. | for type | |
|-------------|--------------|--|
| 58 02 05 00 | MC 150 x ... | |
| 58 07 05 00 | MC 200 x ... | |



Rigid slide-way

| Id. No. | for type | |
|-------------|--------------|--|
| 58 02 06 00 | MC 150 x ... | |
| 58 07 06 00 | MC 200 x ... | |



Pair of keys for fixed suport

| Id. No. | for type | |
|-------------|--------------|--|
| 58 02 14 09 | MC 150 x ... | |
| 58 03 14 09 | MC 200 x ... | |



Wrench

| Id. No. | for type | |
|-------------|--------------|--|
| 58 02 19 00 | MC 150 x ... | |
| 58 03 19 00 | MC 200 x ... | |



Complete clamping block (new type)

| Id. No. | for type | |
|-------------|--------------|--|
| 58 02 74 11 | MC 150 x ... | |
| 58 03 74 11 | MC 200 x ... | |



Block for clamping screw (new type)

| Id. No. | for type | |
|-------------|--------------|--|
| 58 02 12 12 | MC 150 x ... | |
| 58 03 12 12 | MC 200 x ... | |



Clamping screw

| Id. No. | for type | |
|-------------|--------------|--|
| 58 02 08 12 | MC 150 x ... | |
| 58 03 08 12 | MC 200 x ... | |



Contrast pin

| Id. No. | for type |
|-------------|--------------|
| 58 02 10 01 | MC 150 x ... |
| 58 03 10 01 | MC 200 x ... |



Positioning plate

| Id. No. | for type |
|-------------|--------------|
| 58 02 11 11 | MC 150 x ... |
| 58 03 11 11 | MC 200 x ... |



Work stop

| Id. No. | for type |
|-------------|--------------|
| 58 02 50 00 | MC 150 x ... |
| 58 03 50 00 | MC 200 x ... |



Cover for protection of the screw

| Id. No. | for type |
|-------------|--------------|
| 58 02 28 10 | MC 150 x ... |
| 58 03 28 10 | MC 200 x ... |



Block for cylinder

| Id. No. | for type | |
|-------------|--------------|--|
| 58 02 12 20 | MC 150 x ... | |
| 58 03 12 20 | MC 200 x ... | |



Tang for cylinder

| Id. No. | for type | |
|-------------|--------------|--|
| 58 02 16 00 | MC 150 x ... | |
| 58 03 16 00 | MC 200 x ... | |



Can of oil

| Id. No. | for type | |
|-------------|--------------|--|
| 10 72 99 40 | MC 150 x ... | |
| 10 72 99 40 | MC 200 x ... | |